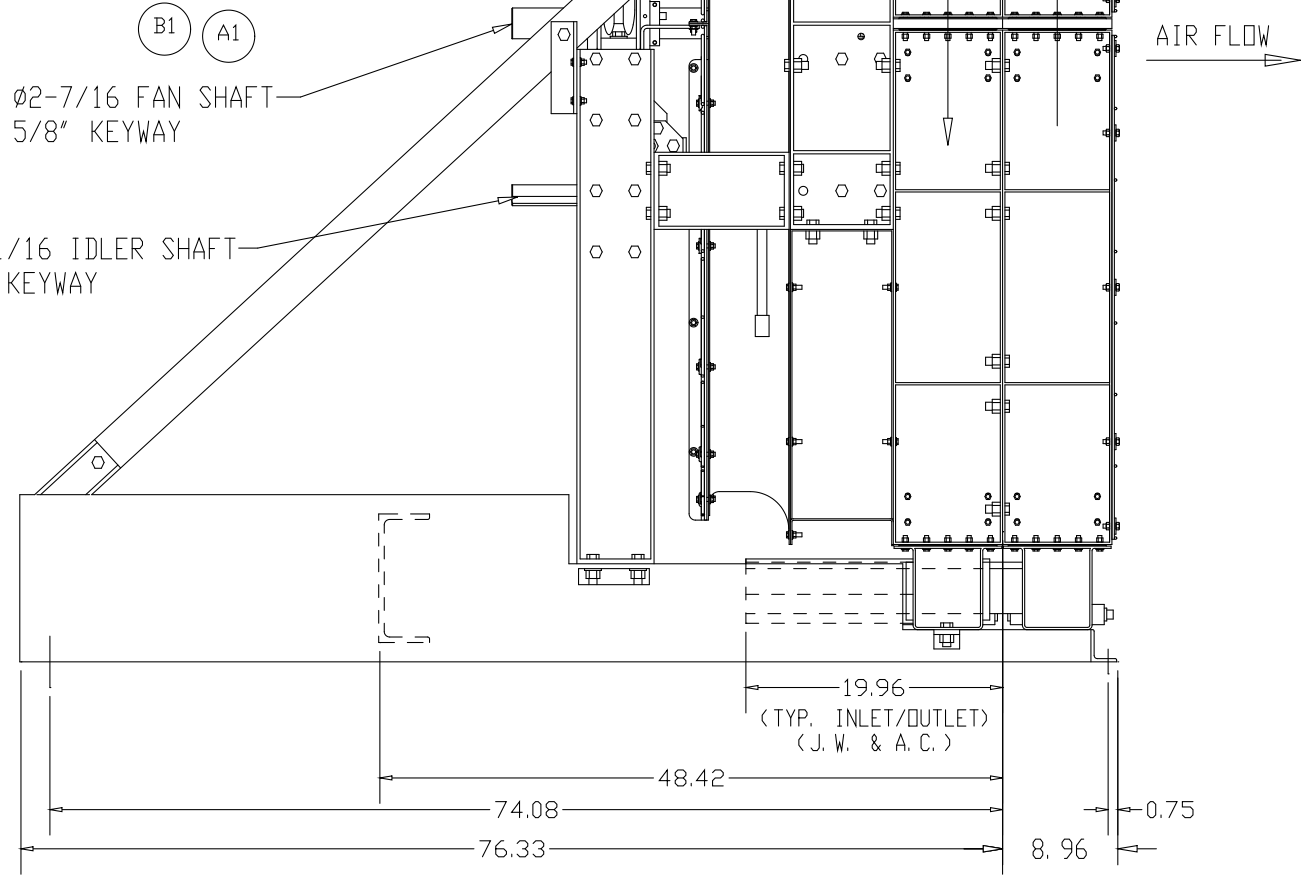
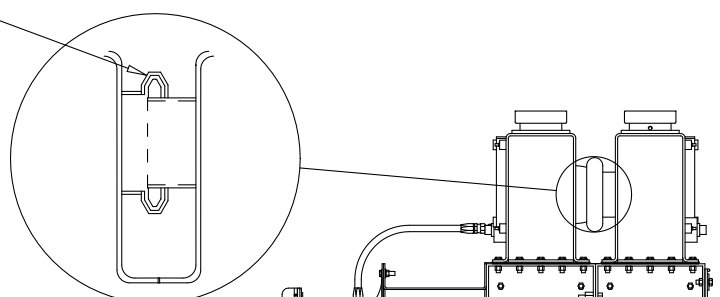


NOTES:

- 1) PIPING TO RADIATOR SHOULD BE EXTERNALLY SUPPORTED, NOT HUNG ON RADIATOR ASSEMBLY. FLEXIBLE CONNECTIONS SHOULD BE USED WHEN PIPING TO RADIATOR.
- 2) DIMENSIONS ARE GIVEN IN INCHES.
- 3) NAMEPLATE IS STAMPED WITH COMPLETE MODEL NO., SERIAL (S.O.) NO., AND MANUFACTURING DATE (MONTH/YEAR).
- 4) LUBRICATE FAN DRIVE BEARINGS (4) PER RECOMMENDATION IN IOM MANUAL.
- 5) UNIT IS NORMALLY SHIPPED WITH IDLER SLIDE PLATE LOCKING NUTS TIGHTENED, THESE MUST BE LOOSENED BEFORE ADJUSTING IDLER AND TIGHTENED AGAIN AFTER MAKING ADJUSTMENTS. DO NOT TURN BOLT HEADS ON BEARING PILLOW BLOCKS. REFER TO IOM MANUAL FOR COMPLETE DESCRIPTION.

#8411002A FILLER NECK ASSEMBLY

INSTALL COUPLINGS GASKETS & GASKET RETAINERS ON 3.5 DIA. TUBES BEFORE BOLTING COOLING SECTIONS TOGETHER.



DRY WEIGHT	4600 LBS. 2091 KG
FLUID CAPACITY	86.8 US GAL 328 LITER

IMPORTANT
 MAX. OPERATING PRESSURE: 20 P.S.I.
 MAX. OPERATING TEMPERATURE: 225°F

CHANGE #	REV.	CHECKED	DATE	MATERIAL	NAME	DATE	PART NUMBER
01-241	A1	RAH	6-21-01		ECO46F RADIATOR	12/29/00	ECO46S122
01-262	B1	RAH	7-09-01		STACKED COUNTERFLOW W/ML J.W. & A.C. COMBINED FLOW EXTRUDED W/FUEL COOLER	DRAWN BY: JKA	
					TOLERANCES UNLESS OTHERWISE SPECIFIED	CHECKED	
					1 PLACE (.X) ±.1	SCALE	
					2 PLACE (.XX) ±.06	1:16	
					3 PLACE (.XXX) ±.015		
					ANGULAR ±1 DEG.		
					TOLERANCES ARE NON-CUMULATIVE & DO NOT APPLY TO MATERIAL GAGES OR COMMERCIAL FEATURES.		
						PROPERTY OF IEA, INC.	
						CONFIDENTIAL PROPRIETARY INFORMATION	