

**Used MD Cowan 525M Super Single Drilling Rig,
Manufactured in 2005, as it is.**

MD COWAN MD 525 M SUPER SINGLE

RIG SPECIFICATIONS

Drilling Capacity: Rig Tech RT 400 525 HP grooved f/1-1/8" line p/b CAT C-15 diesel engine. Allison 6610 m transmission, Eaton auxiliary brake.

Drawworks: Rig Tech RT-400B with 2:1 right angle drive box, band brakes, Eaton dual piston, clutch brake, and LeBus grooving; powered by one (1) CAT C-15 engine. Mounted on a 3 axle carrier.

Mast & Crown Block: International Derrick Service 67'H X 8'W 500,000 lbs (250T) GNC, 2 Hydraulic cylinders for raising.

Substructure & Pipe Handling: MDC designed, hydraulically powered, operated pipe boom with mud boat skid & pipe handling boom arm (note: 12'H x 10'W: 10'7" clearance under rotary beams) skidded mounted; iron roughneck/torque tool. Current CAT 3 Inspector.

Power Swivel: Venturetech XK-150 Ton Hydraulic Topdrive (Current CAT 4 Inspection). New Hydraulic Motor.

Hydraulic Power Unit: P/B CAT C-9 Diesel Engine, Electric Starter Radiator, Gauges, Palatec 30 DG Air Compressor, P/B 30 HP Electric Motor with Air Volume Tank. New HPU Hydraulic Pump.

Koomey 3 Station 80 Gallon Closing Unit with (4) 20 Gallon Accumulator Bottles, Triplex Charging Pump P/B 30 HP Electric Motor, (1) Air-Actuated Hydraulic Charging Pump, 5 Star Retriever 15,000' Wireline Machine, Skidded

"Your First Choice for Rigs & Equipment"

Triplex Mud Pumps:

(1) Weatherford MP-8 Triplex Mud Pump, 800 HP, p/b CAT 3508 Diesel Engine

(1) Continental EMSCO F-1000 Triplex Mud Pump, 1000 HP, p/b CAT D398 Diesel Engine.

330 BBL Mud Tank – 3 Compartments, Slope bottom w/Dump Doors And Valves, Harrisburg Single Screen 4x5 Shale Shaker, Demco 2 cone Desander, Electric Agitator, Stirring Guns, 6x8 Centrifugal Pump p/b 6 cylinder Deutsch Diesel, 3x4 Centrifugal Pump p/b 30 hp Electric Motor.

Generator: (2) 300 KW, Diesel Engine, Electric Starter, Radiator, Gauges, Skidded.

Fuel/Water Tanks: 3000 Gallon Fuel Tank w/4 compartment Lubster, 300 bbl Water Tank w / 2x3 Centrifugal Pump.

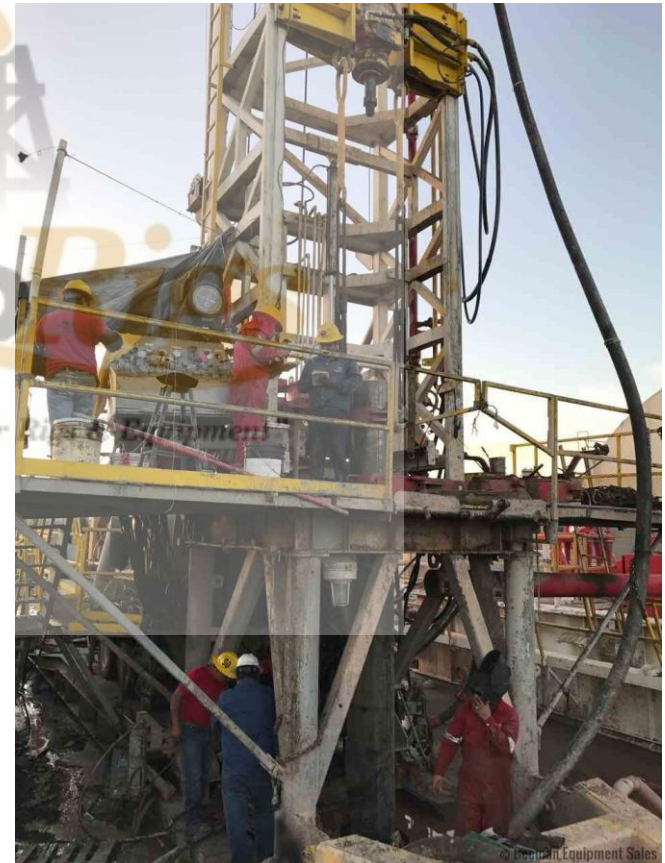
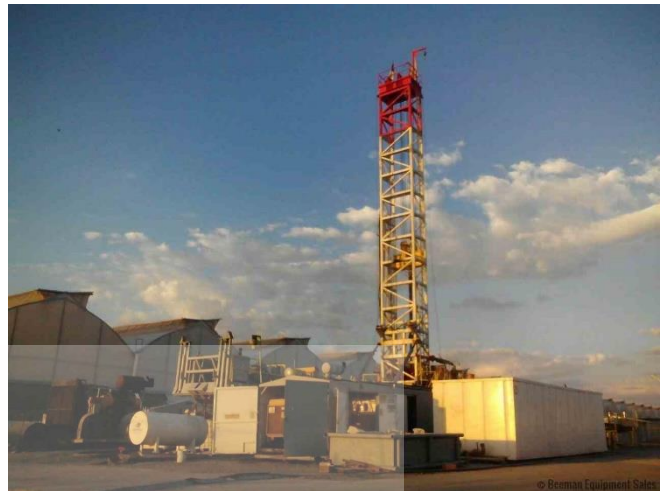
Top DogHouse: 7'9" Wide x 20' Long with 4' Long Porch Extension, Round Top, Knowledge Box, (4) Lockers, Bench Storage Cabinets, Parts Bins, Type FS 315,000# Weight Indicator, Fluorescent Lights, Heater, Skidded.

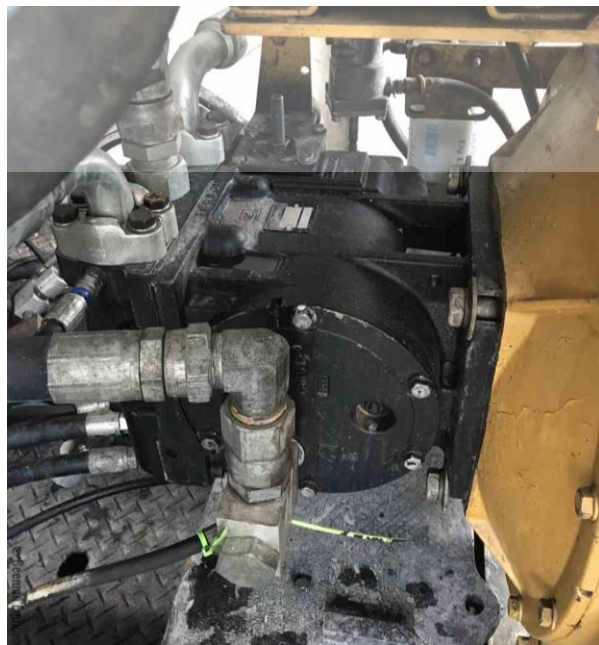
Change House / Parts House: 7'8" Wide x 27'1" Long, Crimped Steel, Round Top, (12) Lockers, Bench Storage Cabinets, Parts Bin, Roller Chain, Pump Parts, Fluorescent Lights, Heater, Skidded

Utility House: 10' Wide x 50'2" Long, Square D Electric Control Panel with Wiring, 75 KVA Electric Transformer, Fluorescent Lights, Skidded

MD Cowan 525M Super Single Drilling Rig







Triplex Mud Pump:

Weatherford MP-8



Triplex Mud Pump:

Continental EMSCO F-1000

