

www.PetroRigs.com



www.PetroRigs.com

MID-CONTINENT
U-36-A



www.PetroRigs.com

FIRE
EXTINGUISHER

BEFORE
2000 LBS
1000 KG

WARNING: DO NOT LIFT HERE / DO NOT REMOVE SPACER



www.PetroRigs.com



The image shows two large, vertical, red industrial valves or wellhead components. They are mounted on a metal platform with yellow safety railings. The valves have a cylindrical shape with a wider top section and a narrower bottom section. They are connected to a network of white pipes. The background shows an outdoor industrial site with a gravel area, a white pickup truck, and some green equipment. The sky is blue with some clouds.

www.PetroRigs.com



www.PetroRigs.com

www.PetroRigs.com





www.PetroRigs.com



www.PetroRigs.com



www.PetroRigs.com



www.PetroRigs.com

DANGER
NO SPACE
ENTER
E REQUIRED

DANGER
HIGH VOLTAGE
AUTHORIZED
PERSONNEL ONLY

WARNING
WEARING PROTECTIVE
EQUIPMENT IN THIS AREA
IS A REQUIREMENT
FOR PROTECTION
AGAINST ELECTRICAL
SHOCK

CAUTION
INSTALL GROUNDING
RODS BEFORE
STARTING
GENERATOR ENGINES

FIRE
EXTINGUISHER

www.PetroRigs.com



A photograph of industrial machinery, likely a pump or engine, with various pipes and components. A large section of the machinery is wrapped in white insulation. A prominent red cylindrical filter is visible in the lower center. The equipment is mounted on a metal frame over a perforated metal floor.

www.PetroRigs.com



www.PetroRigs.com

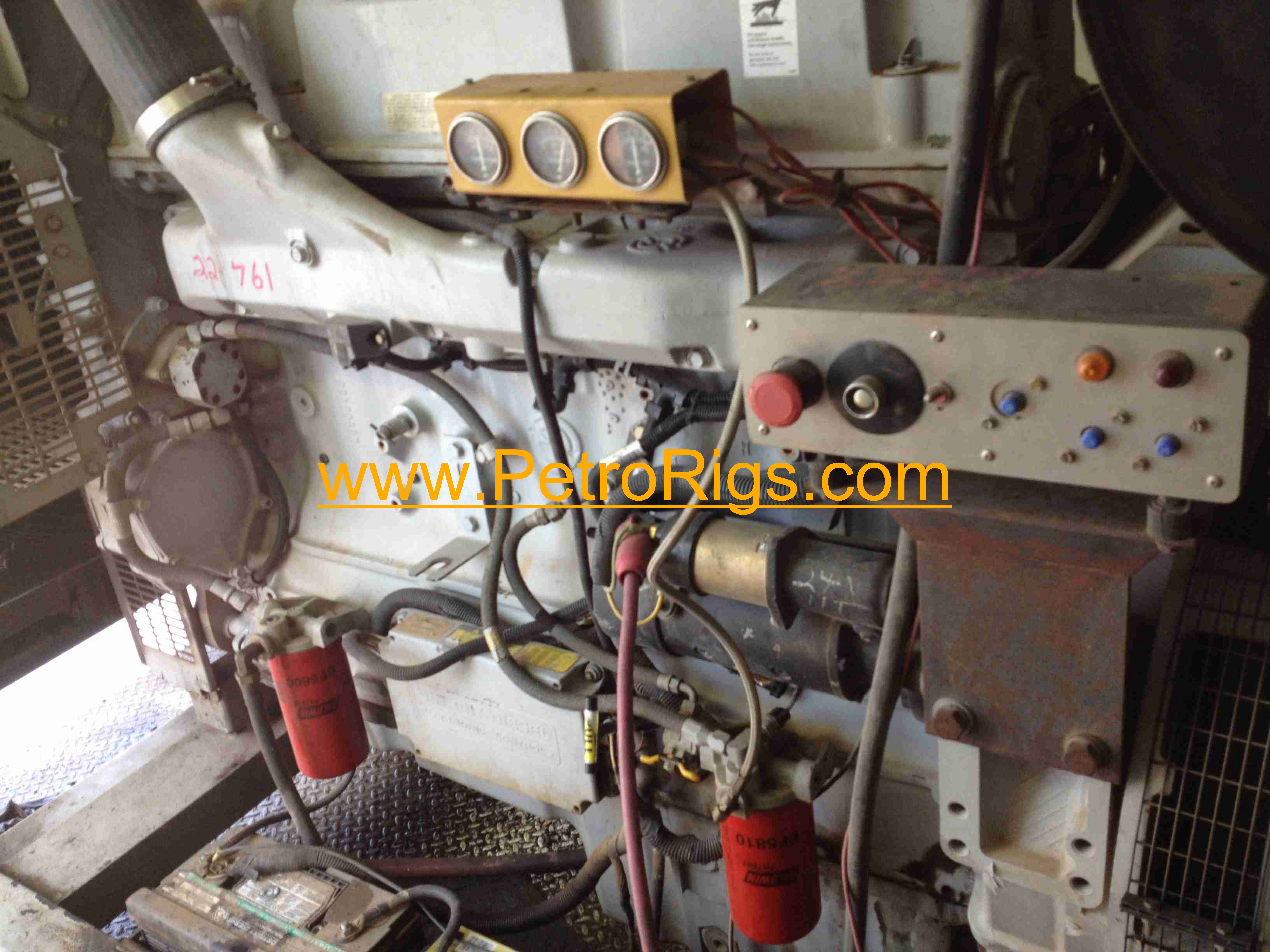
www.PetroRigs.com

2-1159
14-6-12-08
Sullivan
Palatek

DANGER **PELIGRO**
THIS MACHINE
WILL START
AUTOMATICALLY
MAQUINA
EMPEZA
AUTOMATICAMENTE

30DG

WARNING
DANGER



www.PetroRigs.com

www.PetroRigs.com





www.PetroRigs.com

39

www.PetroRigs.com

DANGER
THIS MACHINE
MAY START
AUTOMATICALLY

ATTENTION
KEEP KEYS
IN HERE
UNLESS
AUTHORIZED
PERSONNEL
ARE PRESENT



www.PetroRigs.com





www.PetroRigs.com

www.PetroRigs.com

9-15-11
1727
1513
6N6650
12-4448

IN
12-14





www.PetroRigs.com



www.PetroRigs.com



www.PetroRigs.com

www.PetroRigs.com





www.PetroRigs.com