



DANGER
CONFINED SPACE
ENTER BY PERMIT ONLY



1993

JIESE
DANGER

DANGER
CONFINED SPACE
ENTER BY POINT IN

PILOT











Kato Engineering



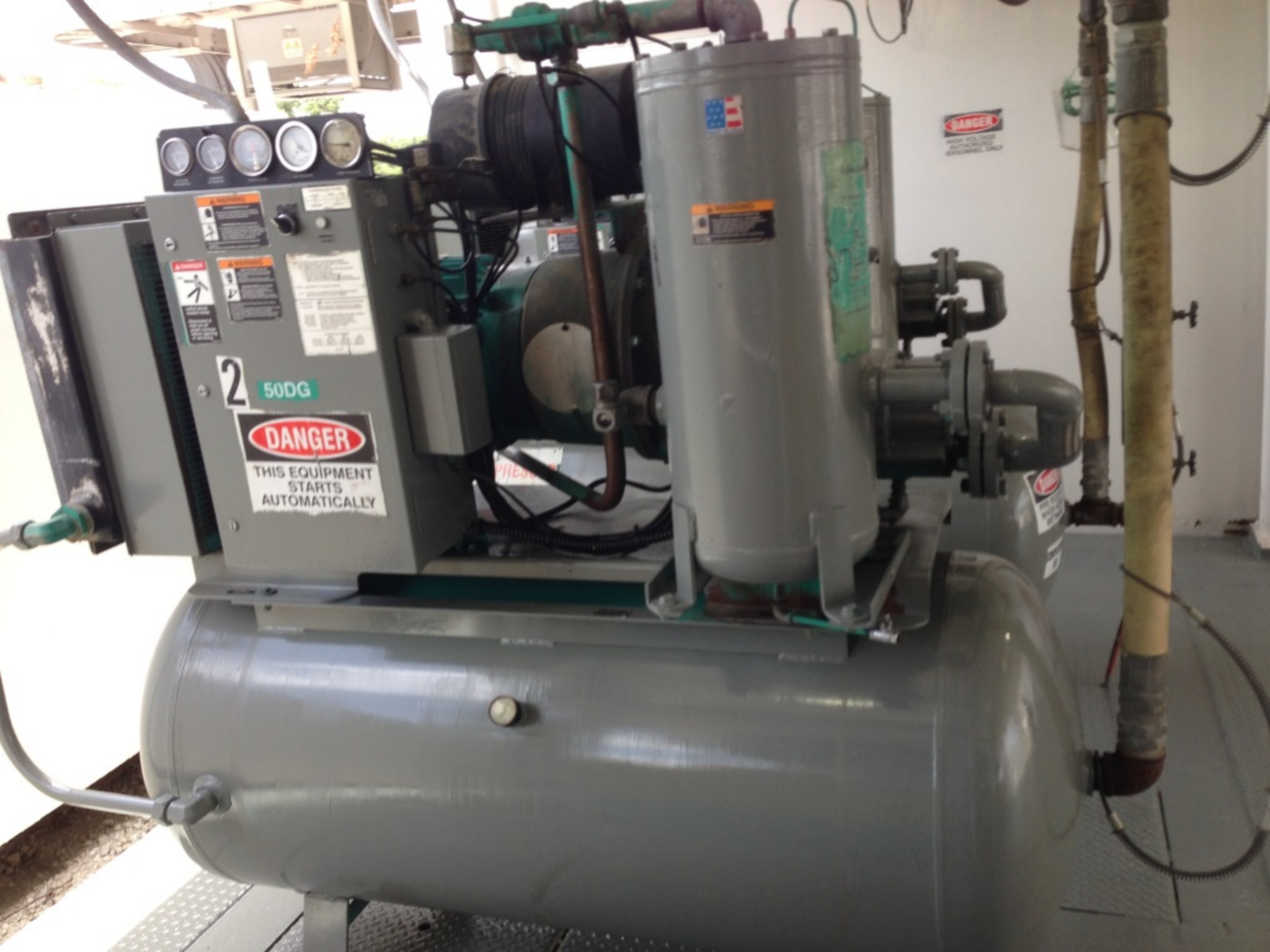
GENERATOR

CAUTION

INSTALL GROUNDING
RODS BEFORE
STARTING
GENERATOR ENGINE



CAUTION



Four circular gauges on the control panel.

DANGER
FALLING PERSON
DO NOT ATTEMPT TO REPAIR OR MAINTAIN THIS EQUIPMENT WHILE IT IS RUNNING OR HOT.

2 50DG

DANGER
THIS EQUIPMENT STARTS AUTOMATICALLY

DANGER
HIGH VOLTAGE
ELECTRICAL EQUIPMENT ONLY













ATTENTION

KEEP KOOMEY CONTROLS
IN NEUTRAL POSITION
UNLESS BEING USED

Accumulator Pres. Gauge at _____ PSIG
Manifold Pres. Gauge at _____ PSIG
Annular Pres. Gauge at _____ PSIG

Maximum oil level in tank _____ inches
Minimum oil level in tank _____ inches

WARNING
HOT
PRESSURE





NON
POTABLE
WATER

DANGER

NON-DRINKABLE
WATER DO NOT
DRINK WATER

