



KOMATSU



F1 F2 F3 F4 F5 F6

EX/EX 1	2	CUSTOM 3
4	5	R 6
7	8	AUTO 9
	10	A/C
11	12	OFF

The ignition area includes a keyhole with a key inserted. To the right of the keyhole are three indicator lights: a red one, a yellow one, and a green one.

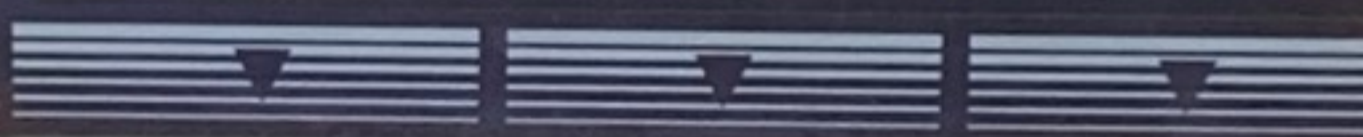
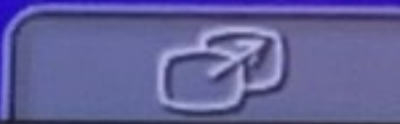
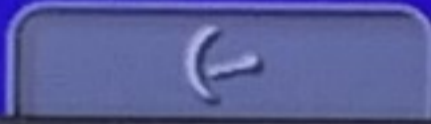






AUTO F

⌚ 02574.9 h



F1

F2

F3

PA/EX 1

⚡ 4

⊙ ▲ 7

▼

🌡





MIN

MAX









Control panel with buttons: AUTO, A/C, OFF, and directional arrows.



Model No. V0287  
Product Identification Number: 1KMT0512TTF48902674  
MANUFACTURED BY: Komatsu Ltd., Tokyo, Japan



MAT'S



KOMATSU D65

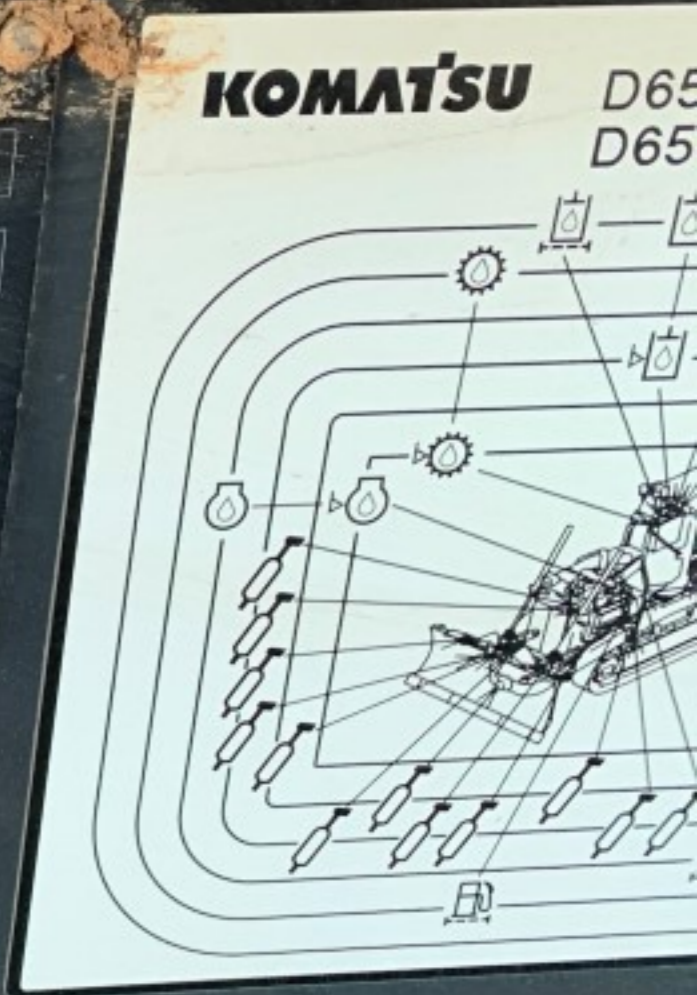
**MODEL** D65EX-18

**SERIAL No.** 90267

**Product Identification Number** \*KMTOD127TFA090267\*

**MANUFACTURER** Komatsu Ltd., Tokyo, Japan

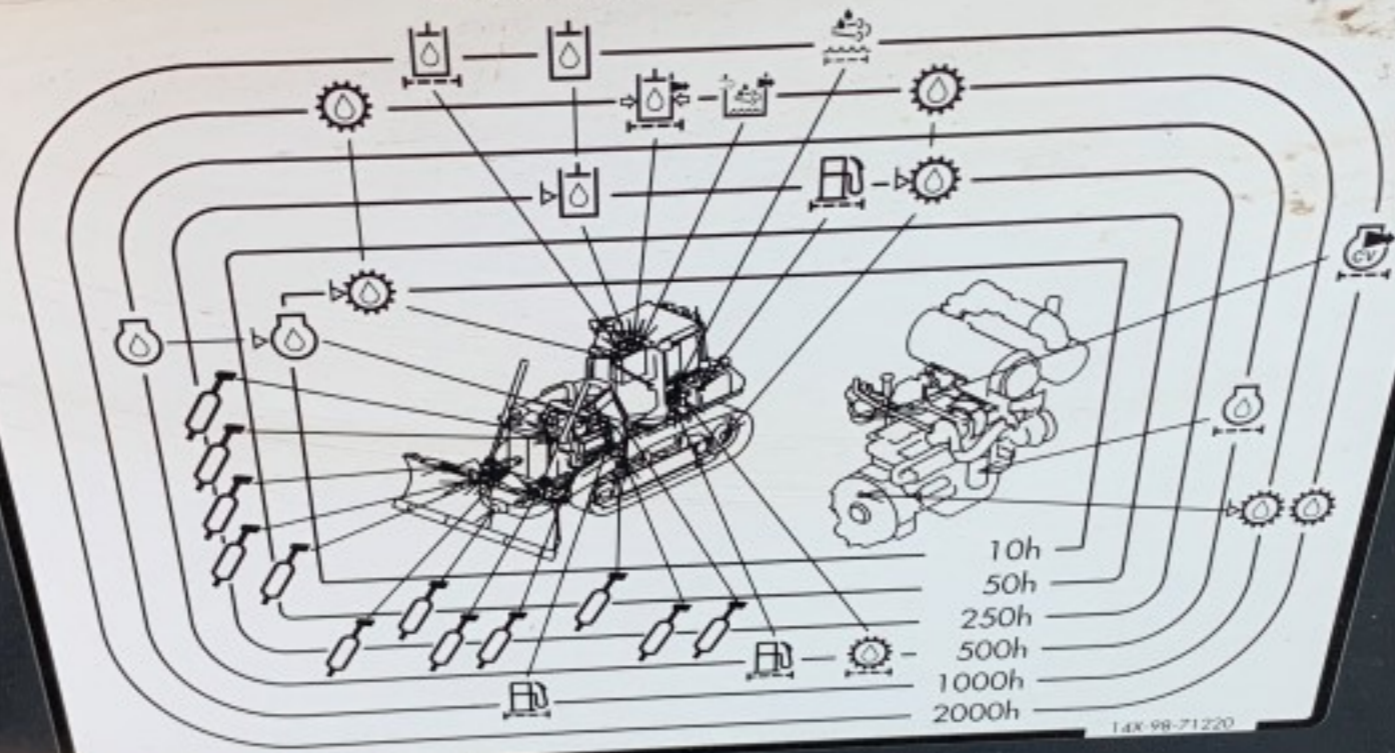
**KOMATSU** 09602-10002





**KOMATSU**

D65PX D65WX  
D65EX



14X 98-71220

27TFA090267 \*



Tokyo, Japan

09602-10002







**WARNING:** In case of accident, stop the machine immediately. Unless life threatening, do not get out of the machine. Call your local Kuryakain office. **CAUTION:** Will be changed for usage over 8-hour cycle. 600-1170-1170.

**WARNING:** Work, gear...













KOMATSU

D65EX

KOMATSU

▲ DANGER  
Keep a safe distance

KM17





⚠ D  
Keep a









KRETS TH  
MACHINERY, INC.  
www.krets.com

KOMATSU

D  
65EX

17523





NOTICE

↑ TOP ↑  
KOMATSU

KOMATSU





Certificate of New Construction Machine for Export

Sticker No.

AT-

Model

[Redacted]

Serial No.

[Redacted]

Manufacturer

Komatsu Ltd.

CEMA

JAPAN CONSTRUCTION EQUIPMENT MANUFACTURERS ASSOCIATION