



DRILLING RIG SPEC SHEET

**COMPLETE RIG WITH TOP DRIVE,
BOP & DRILL PIPE**

2,000 HP SCR

INDEX

1. General Aspects4

2. Mast4

 2.1. Crown4

 2.2. Drilling Cable (12 Lines)5

 2.3. Rotary’s Hose5

 2.4. Top Drive5

 2.5. Top Drive’s Control Room6

 2.6. Dead Line Anchor6

 2.7. Stand Pipe6

3. Sub-structure7

4. Draw-works7

5. Generators8

 5.1. Generator # 18

 5.2. Generator # 29

 5.3. Generator # 310

 5.4. Generator # 411

 5.5. Control and Power Room11

6. Compressors12

 6.1. Compressor # 112

 6.2. Compressor # 212

 6.3. Air Dryer12

 6.4. Air Tank #113

 6.5. Air Tank # 213

7. Well Control Equipment13

 7.1. Double BOP13

 7.2. Single BOP14

 7.3. Annular BOP14

 7.4. Strangulation Multiple14

 7.5. Degasser15

8. Mud Pumps15

 8.1. Mud Pump # 115

 8.2. Mud Pump # 216

9. Solids Control Equipment17

 9.1. Shale Shakers17

 9.2. Desilter17

10. Tanks	18
10.1. Fuel Tank	18
10.2. Water Tank	18
10.3. Mud Tanks	20
11. Staff's House	27
12. Tools House	27
13. Drilling Pipe	28
14. Driller's Console	28
15. Indicators and Pressure Gauges Console	28
16. Gas/Mud Separator and Auxiliary Pit	29
17. Connections Extension	30
18. Burned Oil Tank	30
19. Transformer	30
20. Ramp, Stairs and Links Manifold	31
21. Mixing System	31
22. Mixing Tank	31
23. Traveling Pulley and Hook	34
24. Rotary Table	34
25. Preventers Control Unit (KOOMEY)	34
26. Links and Valves Container	35
27. Pneumatic Draw-works	35
28. 12 Wood Boxes with Diverse Tools	35
29. Drillers House with Preventers Control Unit Remote Control	36

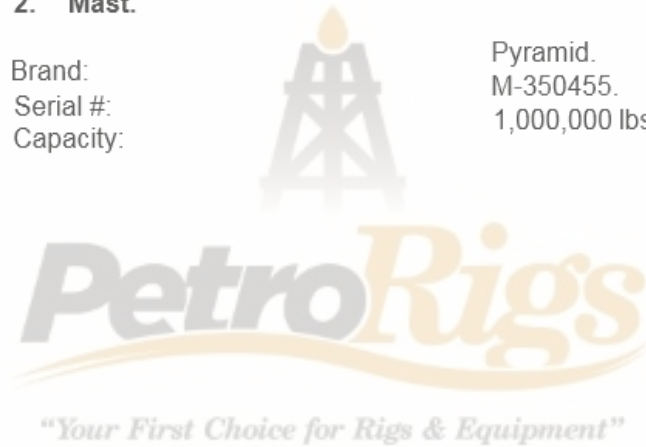
1. General Aspects.

Name/Rig #: Rig-15.
Brand: Pyramid.
Capacity: 2,000 HP.
Lines #: 12 lines.
Structure Maximum Capacity: 1,000,000 lbs. (454 ton.).
Drilling Cable Range: 1 1/2".



2. Mast.

Brand: Pyramid.
Serial #: M-350455.
Capacity: 1,000,000 lbs. (454 ton.).



2.1. Crown.

Brand: Pyramid.
Model: PA-7/60.
Serial #: # of 1DBC027.
Pulleys: 6 pulleys (1 fast), 60" x 1 1/2".
Capacity: 1,000,000 lbs. (454 ton.).



2.2. Drilling Cable (12 Lines).

Size:

1 1/2".

Description:

Cable composed of 6 strands and 1 steel core (6x19), BOA type.



2.3. Rotary's Hose.

Brand:



DI:

Gates.

Working Pressure:

3".

Testing Pressure:

5,000 psi.

10,000 psi.



2.4. Top Drive.

Brand:

VARCO.

Model:

TDS11 500 TON.

Serial #:

230.

Capacity:

500 ton.



2.5. Top Drive's Control Room.

Brand: National Oilwell Varco.
Model: TDS11.
Serial #: 30178435-2A150.



2.6. Dead Line Anchor.

Brand: National.
Serial #: 649985.



2.7. Stand Pipe.

DI: 4.5".
Working Pressure: 5,000 psi.



3. Sub-structure.

Brand: Pyramid.
Serial #: 5456S344.



4. Draw-works.

Brand: National.
Model: 1320-DE.
Power: 2,000 HP.
Drilling Cable: 1 1/2".



"Your First Choice for Rigs & Equipment"

Powered by 2 electric motors:

Motor #1

Brand: General Electric.
Serial #: C75YZB3.

Motor #2
Brand: General Electric.
Model: 5GE752AR1B.
Serial #: 7420350.



Other Specs:
Brand: Auxiliary Brake.
National Oilwell Varco (Baylor)
"ELMAGCO".
Model: 7838.
Serial #: RQC6076W.
Max. R.P.M.: 600 rpm.
Volts: 250VDC.



5. Generators.

5.1. Generator #1. *1. The #1 Generator for Rigs & Equipment*

Brand: Detroit Diesel.
Model: 1000DSEB.
Force: 60 Hz., 1,800 rpm., 1,113 KVA, 890 kW.



Motor Specs

Brand: Detroit Diesel.
Model: R1637M36.
Serial #: 536200 3657.
Force: 1,493 kW, 1,800 rpm.



5.2. Generator #2.

Brand: Detroit Diesel.
Model: 1000DSEB.
Force: 60 Hz., 1,800 rpm., 1,113 KVA, 890 kW.



"Your First Choice for Rigs & Equipment"

Motor Specs

Brand: Detroit Diesel.
Model: R1637M36.
Serial #: 536200 3823.
Force: 1,493 kW, 1,800 rpm.



5.3. Generator #3.

Brand: Detroit Diesel.
Model: 1000DSEB.
Serial #: 2114012.
Force: 60 Hz., 1,800 rpm., 1,113 KVA, 890 kW.



Motor Specs

Brand: Detroit Diesel.
Model: R1637M36.
Serial #: 536200 3834.
Fuerza: 1,493 kW, 1,800 rpm.



"Your First Choice for Rigs & Equipment"

5.4. Generator #4.

Brand: Detroit Diesel.
Model: 1000DSEB.
Force: 60 Hz., 1,800 rpm., 1,113 KVA, 890 kW.



Motor Specs
Brand: Detroit Diesel.
Model: R1637M36.
Serial #: 536200 3927.
Force: 1,358 kW, 1,800 rpm.



5.5. Control and Power Room.

Description: *First Choice for Rigs & Facilities* Control and Power Room is located in one side of the Generators Room.
Brand: General Electric.



6. Compressors.

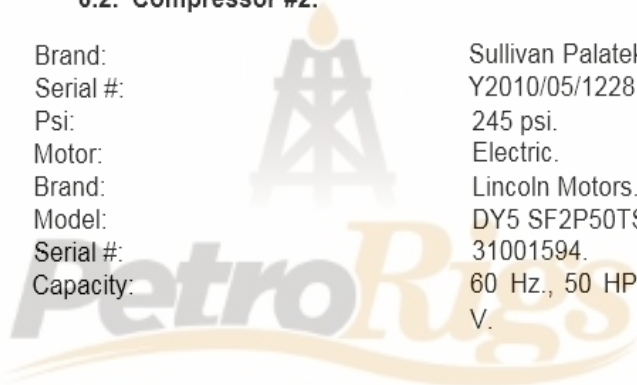
6.1. Compressor #1.

Brand: Sullivan Palatek.
Serial #: W064282.
Psig: 220 psig.
Motor: Electric.
Brand: Lincoln Motors.
Model: SF2P50TSC61yAA3HG3L 16V2.
Serial #: M2092251-05/05-01.
Capacity: 50 HP, 3,555 rpm., 37.3 kW, 60 Hz., 230/460 V.



6.2. Compressor #2.

Brand: Sullivan Palatek.
Serial #: Y2010/05/1228.
Psi: 245 psi.
Motor: Electric.
Brand: Lincoln Motors.
Model: DY5 SF2P50TS61Y-1.
Serial #: 31001594.
Capacity: 60 Hz., 50 HP, 3,550 rpm., 230/460 V.



"Your First Choice for Rigs & Equipment"

6.3. Air Dryer.

Brand: Sullivan Palatek.
Model: SPS200-116.
Serial #: 28546.
Capacity: 200 SCFM @ 120 psig.



6.4. Air Tank #1.

Certified by: Manchester Tank.
Psi: 200 psi.
Gallons: 240 Gallons.



6.5. Air Tank #2.

Certified by: Manchester Tank.
Psi: 200 psi.
Gallons: 240 Gallons.



"Your First Choice for Rigs & Equipment"

7. Well Control Equipment.

7.1. Double BOP.

Brand: Cameron
Type: U.
Serial #: Working 24402 10.
Pressure: 10,000 psi.
Amount: 1.



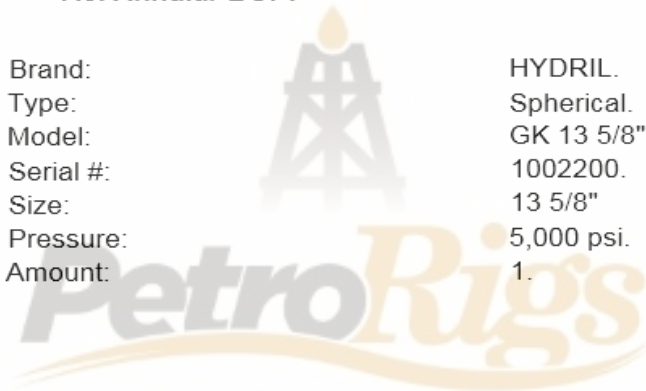
7.2. Single BOP.

Brand: Cameron.
Type: U.
Working Pressure: 10,000 psi.
Amount: 1.



7.3. Annular BOP.

Brand: HYDRIL.
Type: Spherical.
Model: GK 13 5/8" 5000.
Serial #: 1002200.
Size: 13 5/8"
Pressure: 5,000 psi.
Amount: 1.



"Your First Choice for Rigs & Equipment"



7.4. Strangulation Multiple.

Description: Double Strangulation Array.
Serial #: 17601



7.5. Degasser.

Brand: NOV Brandt.
Model: DG-106116645.
Serial #: 146715.
Max. Unit Weight: 3,080 lbs.
Dimensions: 101" x 66" x 77".



8. Mud Pumps.
8.1. Mud Pump #1.

Brand: Gardner Denver.
Model: PZLF.
Serial #: 901200.
Input BHP: 1,600 HP.



"Your First Choice for Rigs & Equipment"

Motor #1
Brand: General Electric.
Model: 5GE752AR1A.
Serial #: 7469052.



Motor # 2
 Brand:
 Model:
 Serial #:

General Electric.
 5GE752AR1B.
 7478684.



SIZE	7"	6 1/2"	6"	5 1/2"
GPM	632	545	465	390
PSI	3905	4529	5000	5000

8.2. Mud Pump #2.

Brand:
 Model:
 Serial #:
 Input BHP:

Gardner Denver.
 PZLA.
 914417.
 1,600 HP.



"Your First Choice for Rigs & Equipment"



Motor #1
 Brand:
 Model:
 Serial #:

General Electric.
 5GE752AR3A.
 7491135.



Motor # 2
 Brand: General Electric.
 Model: 5GE752AR1B
 Serial #: 7530733



SIZE	7"	6 1/2"	6"	5 1/2"
GPM	632	545	465	390
PSI	3905	4529	5000	5000

9. Solids Control Equipment.
9.1. Shale Shakers.

Brand: NOV Brandt.
 Model: K.C.II.T.1918461991.
 Serial #: 146715.
 Capacity: 500 gallons each one.
 Max. Unit Weight: 18,500 lbs.
 Dimensions: 136"x264"x64".
 Description: 3 shale shakers array.



"Your First Choice for Rigs & Equipment"



9.2. Desilter.

Brand: NOV Brandt.
 Model: SE-16 3466956.
 Serial #: Max. 146715.
 Unit Weight: 1,400 lbs.
 Dimensions: 95"x32"x65".
 Hydrocyclones: 16 hydrocyclones (4").



10. Tanks.

10.1. Fuel Tank.

Capacity: 269 bbls. (42.71 m³).
Electric motor
Serial #: BY-348652



10.2. Water Tank.

Capacity: 474 bbls. (75.42 m³).
Serial #: TL900206



Pump #1. *First Choice for Rigs & Equipment™*

Brand: Baker SPD.
Model: 999881BDL.
Serial #: 2774.
Size: 6x5x11.



Motor #1.

Brand: Baldor.
Model: BV843222.
Serial #: C0602010147.
Capacity: 230/460/190/380 V, 30/25 HP,
1770/1460 rpm.



Pump #2.

Brand: FForum SPD.
Model: 999881BBL.
Serial #: 11171.
Size: 4x3x13.
RPM: 2,200 rpm.



Motor #2. *"Your First Choice for Rigs & Equipment"*

Brand: Baldor.
Model: BV843249.
Serial #: C0602020137.
Capacity: 230/460/190/380 V, 30/25 HP,
1770/1460 rpm.



10.3. Mud Tanks.

Travel tank.

Capacity: 226 bbls. (36 m³)
Serial #: TL900207



Pump #1.

Model: Mission Magnum 1.
Size: 4x3x13.



"Your First Choice for Rigs & Equipment"

Motor #1.

Brand: Reliance Electric.
Model: P25G4828C.
Serial #: P25G4828-11.
Capacity: 1,760 rpm, 50.8/25.4 Amp., 230/460 V.



Pump # 2.

Brand: Baker SPD.
Model: 999881BBC.
Serial #: 4481.
Size: 4x3x13.



Motor # 2.

Brand: Reliance Electric.
Model: P25G4828C.
Serial #: P25G4828-11.
Capacity: 1,760 rpm, 50.8/25.4 Amp., 230/460 V.



SUCTION TANK.

Capacity: 521 bbls. (82.88 m³).
Serial #: TS900202



Pump #1.

Brand: FForum SPD.
Model: 999861BDC.
Serial #: 11268.
Size: 6x5x11.
RPM: 2,200 rpm.



Motor #1.

Without
plaque.



"Your First Choice for Rigs & Equipment"

Pump #2.

Brand: National Oilwell Varco.
Model: Mission Magnum I.
Serial #: M90319.
Size: 6x5x11.



Motor #2.

Brand: Baldor.
Model: BV916016.
Serial #: C0602080024.
Capacity: 230/460/190/380 V, 1775/1475 rpm,
60/50 Hz.



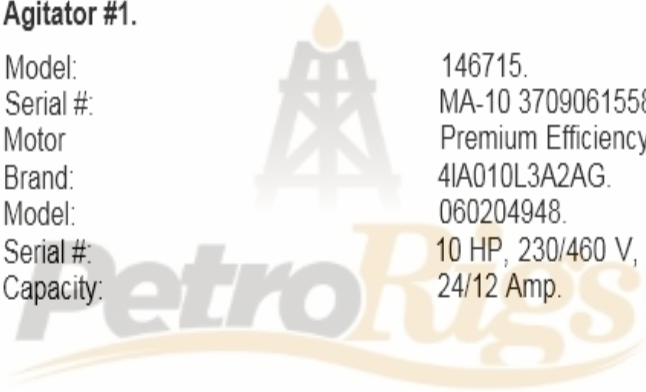
Agitator #1.

Model: 146715.
Serial #: MA-10 3709061558.
Motor: Premium Efficiency EQP III.
Brand: 4IA010L3A2AG.
Model: 060204948.
Serial #: 10 HP, 230/460 V, 60 Hz, 1745 rpm,
Capacity: 24/12 Amp.



Agitator #2.

Model: 146715.
Serial #: MA-10 3709061561.
Motor: Premium Efficiency EQP III.
Brand: 4IA010L3A2AG.
Model: 0602062.
Serial #: 10 HP, 230/460 V, 60 Hz, 1745 rpm,
Capacity: 24/12 Amp.



"Your First Choice for Rigs & Equipment"

Agitator #3.

Without plaque.

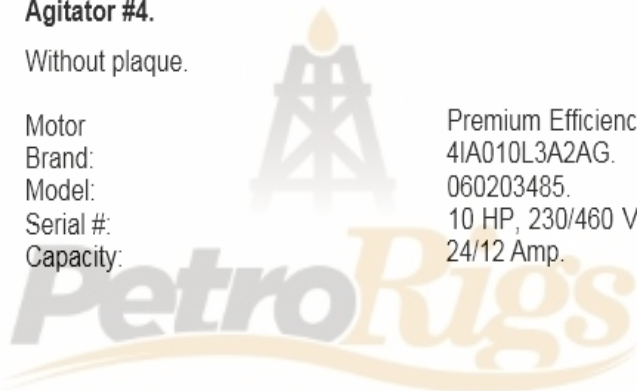
Motor Premium Efficiency EQP III.
Brand: 4IA010L3A2AG.
Model: 060206250.
Serial #: 10 HP, 230/460 V, 60 Hz, 1745 rpm,
Capacity: 24/12 Amp.



Agitator #4.

Without plaque.

Motor Premium Efficiency EQP III.
Brand: 4IA010L3A2AG.
Model: 060203485.
Serial #: 10 HP, 230/460 V, 60 Hz, 1745 rpm,
Capacity: 24/12 Amp.



"Your First Choice for Rigs & Equipment"

SETTLING TANK.

Capacity: 505 bbls. (80.33 m³).
Serial #: TA900201



Pump #1.

Brand: Mission Fluid King.
Serial #: M48664.
Size: 6x5x14.



Motor #1.

Brand: Baldor.
Serial #: C0601310179.
Capacity: 230/460/190/380 V, 75/60 Hz,
1780/1450 rpm.



PetroRigs

"Your First Choice for Rigs & Equipment"



Pump #2.

Serial #: 0577.
Size: 5x6x14.



Motor #2.

Brand: Baldor.
Model: BV843231.
Serial #: C0602010204.
Capacity: 230/460/190/380 V, 75/60 Hz,
1780/1450 rpm.



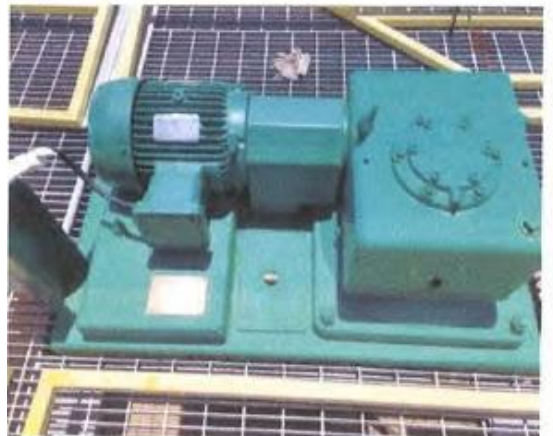
Agitator #5.

Model: 146715.
Serial #: MA-10 3709061559.
Motor Premium Efficiency EQP III.
Brand: 4IA010L3A2AG.
Model: 060206247.
Serial #: 10 HP, 230/460 V, 60 Hz, 1745 rpm,
Capacity: 24/12 Amp.



Agitator #6. *"Your First Choice for Rigs & Equipment"*

Model: 146715.
Serial #: MA-10 3709061563.
Motor Premium Efficiency EQP III.
Brand: 4IA010L3A2AG.
Model: 060204954.
Serial #: 10 HP, 230/460 V, 60 Hz, 1745 rpm,
Capacity: 24/12 Amp.



Agitator #7.

Model: 146715.
Serial #: MA-10 3709061562.

Motor: Reliance Electric.
Brand: P21G4828C.
Model: S9026504-001.
Serial #: 230/460 V, 60 Hz, 24.4/12.2 Amp,
Capacity: 1750 rpm.



11. Staff's House.

Serial #: CP900204



12. Tools House.

Serial #: CH900405



13. Drilling Pipe.

Description: Drilling pipe with hard banding, 5" diameter, S-135 grade, NC50 connection.
Cantidad: 526



14. Driller's Console.



15. Indicators and Pressure Gauges Console



16. Gas/Mud Separator and Auxiliary Pit

Serial #:

74WU0255



17. Connections Extension

Serial #: TZ900208



18. Burned Oil Tank

Serial #: RW-0001



"Your First Choice for Rigs & Equipment"



19. Transformer



20. Ramp, Stairs and Links Manifold



21. Mixing System

Serial #:



5IPE



"Your First Choice for Rigs & Equipment"



22. Mixing Tank

Serial #:

TM900203



Pump #1

Serial #: 15794



Pump #2

Serial #: 999881BE8

Motor #1

Serial #: BV916488



Motor #2

Serial #: 1007461979



"Your First Choice for Rigs & Equipment"

Agitator #1

Motor
Brand: Premium Efficiency EQP III
Model: 4IA010L3A2AG
Serial #: 060206248
Capacity: 10 HP, 230/460 V, 60 Hz, 1745 rpm, 24/12 Amp



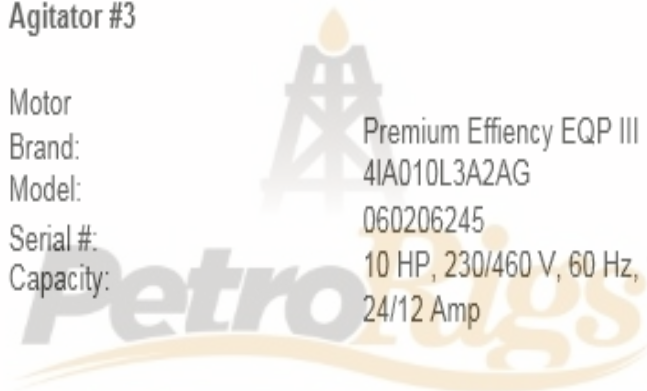
Agitator #2

Motor
Brand: Premium Efficiency EQP III
Model: 4IA010L3A2AG
Serial #: 060206240
Capacity: 10 HP, 230/460 V, 60 Hz, 1745 rpm,
24/12 Amp



Agitator #3

Motor
Brand: Premium Efficiency EQP III
Model: 4IA010L3A2AG
Serial #: 060206245
Capacity: 10 HP, 230/460 V, 60 Hz, 1745 rpm,
24/12 Amp



"Your First Choice for Rigs & Equipment"

Agitator #4

Motor
Brand: Premium Efficiency EQP III
Model: 4IA010L3A2AG
Serial #: 060206275
Capacity: 10 HP, 230/460 V, 60 Hz, 1745 rpm,
24/12 Amp



23. Traveling Pulley and Hook

Serial #: 645809



24. Rotary Table

Serial #: 42



PetroRigs

"Your First Choice for Rigs & Equipment"



25. Preventers Control Unit (KOOMEY)

Serial #: C0509605-2

Model: FKQ 720-6



26. Links and Valves Container



27. Pneumatic Draw-works

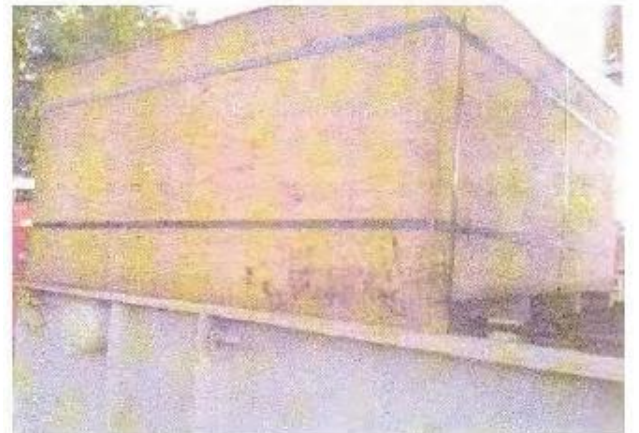
Brand: AIR HOIST
Pneumatic Draw-works #1
Serial #: 031
Pneumatic Draw-works #2
Serial #: 002



"Your First Choice for Rigs & Equipment"



28. 12 Wood Boxes with Diverse Tools



29. Drillers House with Preventers Control Unit Remote Control

Model:
Serial #:

SZQ116
C0509605-2

