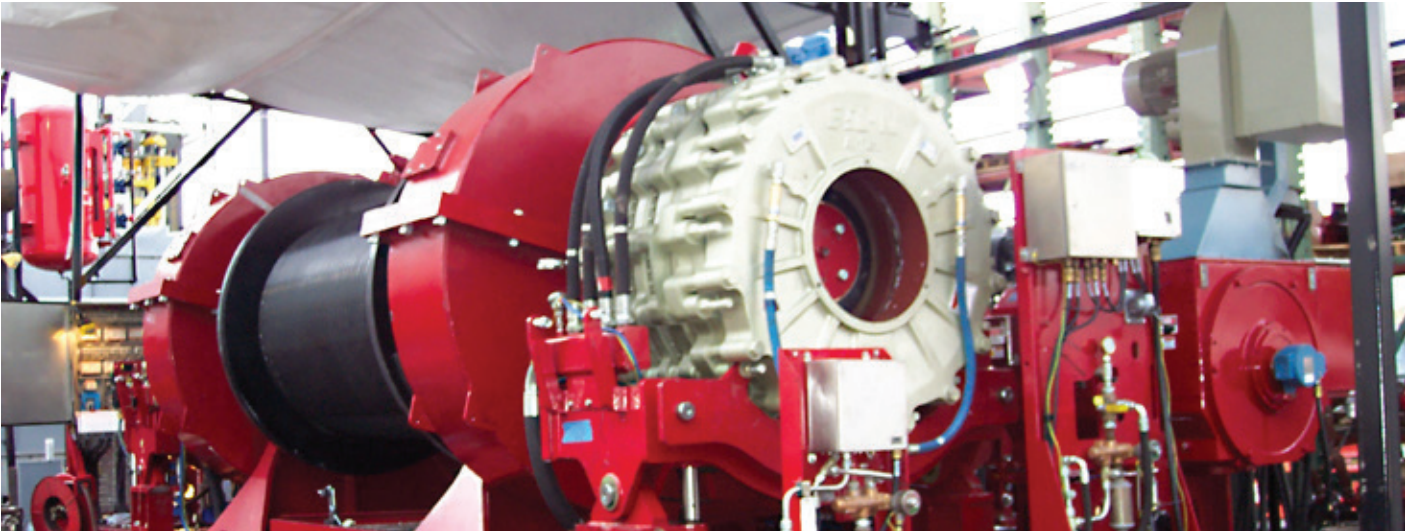


ADS Drawworks

provide drillers with enhanced hoisting control capabilities which increase the efficiency, productivity, and safety of the drilling process.



ADS drawworks are equipped with AC motors which provide significantly more performance and have made possible a machine that requires approximately half the space and weight with less maintenance than traditional drawworks.

Features

- Choice of two, three, or four AC motors with regenerative braking (see specifications table on the following page)
- Unique modularity of common components offering configurable drawworks models for individual customer applications from 1800 to 6000 HP
- High-capacity water and air-cooled friction-plate braking systems offer precision control of the dynamic and static braking capabilities
- Robust single speed gear drive reduces space, and single unitized frame with simplified drum provides a significantly reduced moment of inertia

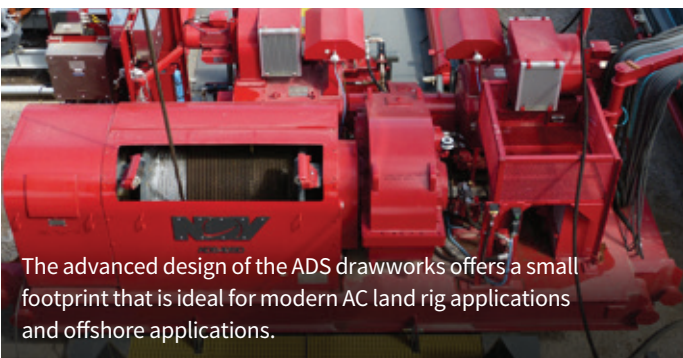
Brakes

- An advanced braking system that offers precise proportional control to improve drilling and tripping technology
- Unique AC-power control characteristics allow regenerative braking and zero-speed load holding without using the friction-plate brakes

Controls

Automation of repetitive drilling operations is offered through a variety of user-friendly NOV control systems. The control system software includes the following features as standard:

- Monitoring and control of brake and lube system
- Monitoring of AC motor temperature and cooling pressure
- Interface to hook load sensor (dead line)
- Dynamic floor and crown saver system
- Disc brake testing system
- Disc brake burnishing system
- Slip and cut function
- Drawworks power management system



The advanced design of the ADS drawworks offers a small footprint that is ideal for modern AC land rig applications and offshore applications.



Automated Drawworks Systems (ADS)



Specifications – NOV ADS*

ADS options with 1150 HP AC motors											
	Model	Intermittent horsepower	Continuous horsepower	Drum size (in.)	Skid dimensions L x W (in.)	Weight (lbs)	Lines	3rd layer hook load (tons)	Motors	Gearbox	Brakes
LAND	ADS-10SD**	2000	1800	30 x 55	276 x 119	64,325	8 10 12	352 428 500	2 ct x 1150 HP	1 ct x GB15	1 ct x 36 in. (A)
	ADS-10D **	2800	2300	36 x 71	295 x 108	98,800	10 12 14	460 537.5 610.5	2 ct x 1150 HP	2 ct x GB15	2 ct x 36 in. (A)
OFFSHORE	ADS-10T	3200	2950	36 x 71	328 x 108	112,000	10 12 14	572.5 669 760	3 ct x 1150 HP	2 ct x GB15	2 ct x 36 in. (A)(W)
	ADS-10Q	5600	4600	54 x 84	319 x 197	160,000	10 12 14	637.5 775.5 906	4 ct x 1150 HP	2 ct x GB30	2 ct x 48 in. (A)(W)
	ADS-2000SD	2000	2000	30 x 55	247 x 108	63,500	8 10 12	352 428 500	2 ct x 1150 HP	1 ct x GB15	1 ct x 36 in. (A)
ADS options with 1500 HP AC motors											
	Model	Intermittent horsepower	Continuous horsepower	Drum size (in.)	Skid dimensions L x W (in.)	Weight (lbs)	Lines	3rd layer hook load (tons)	Motors	Gearbox	Brakes
LAND	ADS-30D**	3600	3000	36 x 71	319 x 108	105,200	10 12 14	597.5 698 793	2 ct x 1150 HP	2 ct x GB15	2 ct x 36 in. (A)
OFFSHORE	ADS-30T	5020	4500	54 x 84	377 x 132	159,000	12 14 16	790 897.5 999.5	3 ct x 1500 HP	2 ct x GB30	2 ct x 48 in. (A)(W)
	ADS-30Q	6000	6000	54 x 84	377 x 132	164,000	12 14 16	984.5 1118.5 1245	4 ct x 1150 HP	2 ct x GB30	2 ct x 48 in. (A)(W)
	ADS-1500SS	2000	1500	30 x 55	91.5 x 191.5	53,000	8 10 12	286.6 348.6 407.2	1 ct x 1500 HP	1 ct x GB15	1 ct x 36 in. (A)
* NOMENCLATURE and MODEL CLASSIFICATION: D Double motor SD Single gearbox double motor Q Quadruple motor T Triple motor											(A) Air-cooled (W) Water-cooled
Specifications are subject to change without notice. ** Alternative configuration is available on request.											