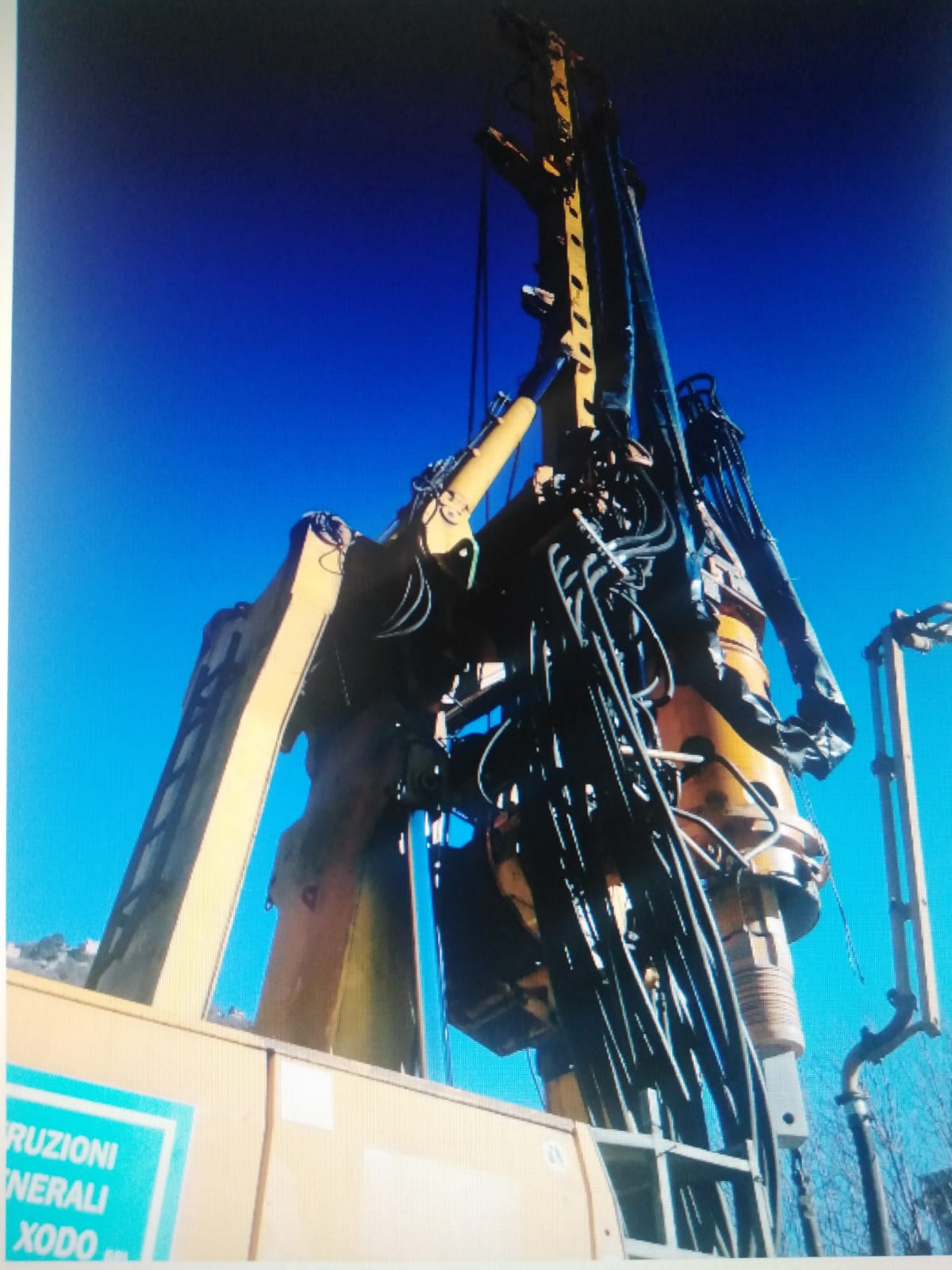





RUZIONI
NERALI
XODO









BAUER





BAUER BG 25







Type: UW65DH

Machine No.: 243473

Total Weight: 17250 kg

Left Weight: 6650 kg

Right Weight: 6550 kg



BAUER TECHNOLOGIES FAR EAST GROUP
MADE BY BAUER

Type **BG25** Base carrier **BH75 #0093**

Year of manufacture **016** Serial no **3473** Inv.no. **[REDACTED]**

Pulling force **260 KN** Pushing power **260 KN**

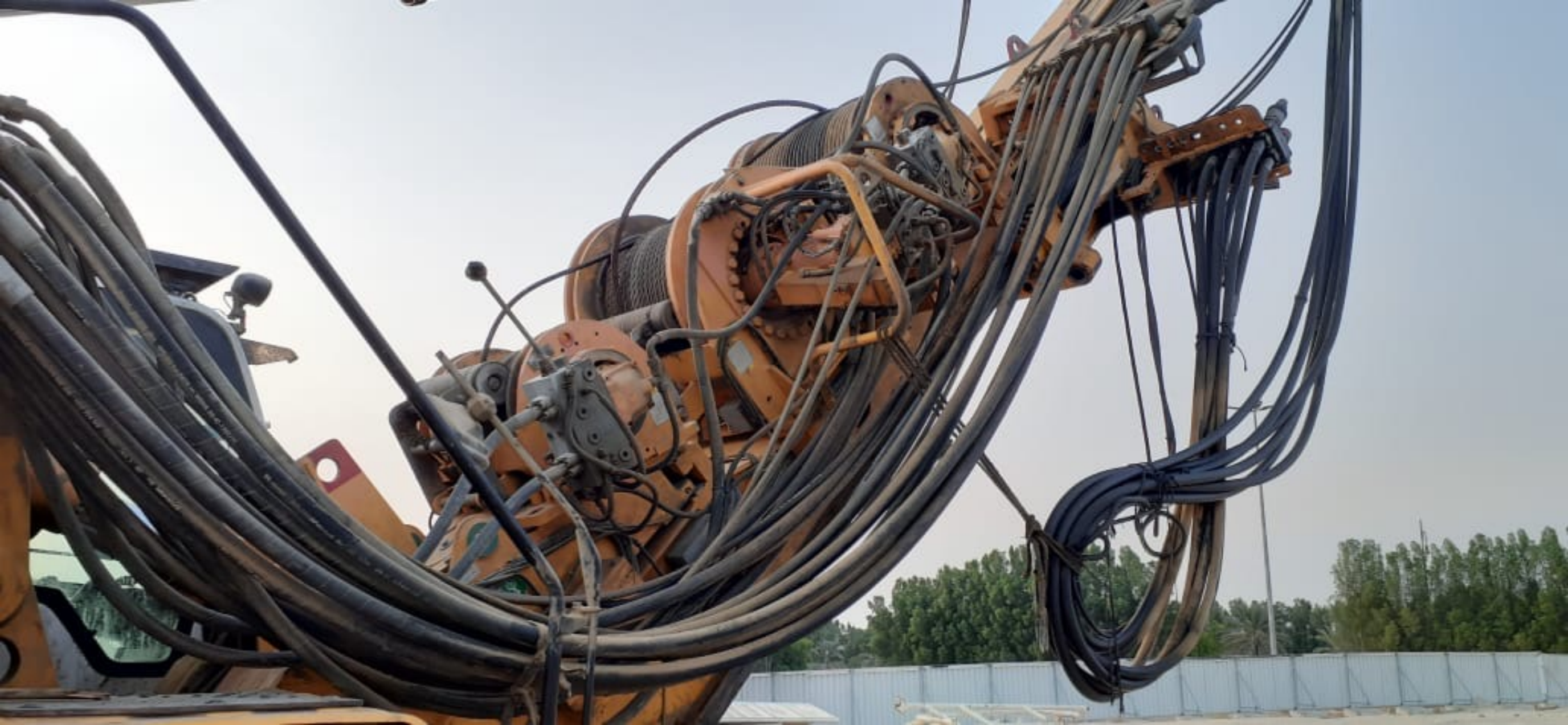
Max.pressure **350 bar** Working pressure **320 bar**

Total weight **[REDACTED] Kg** Working voltage **24 V**

Engine power **213 KW** Frequency **[REDACTED] Hz**

Expert test

CE sign









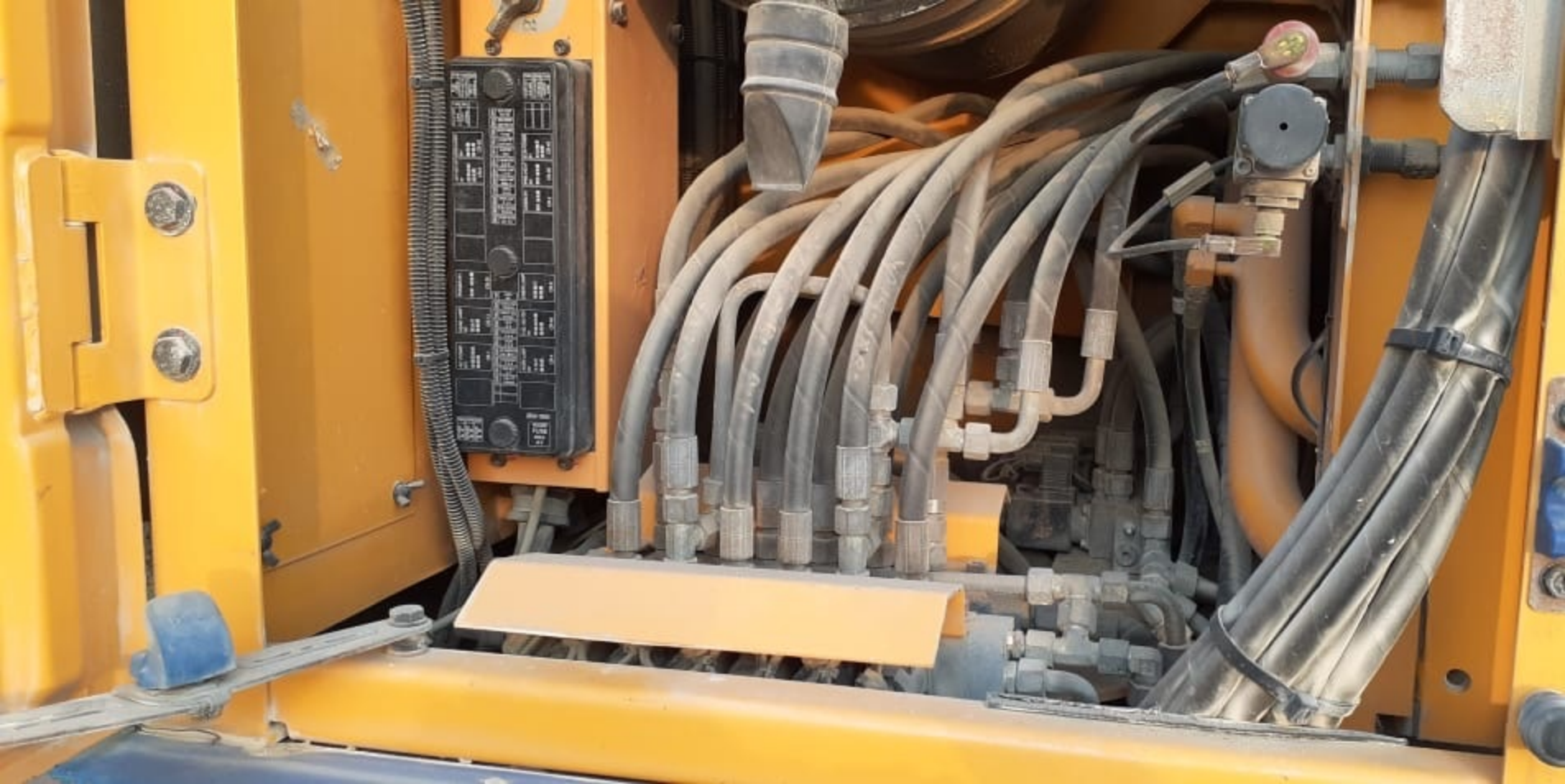
M

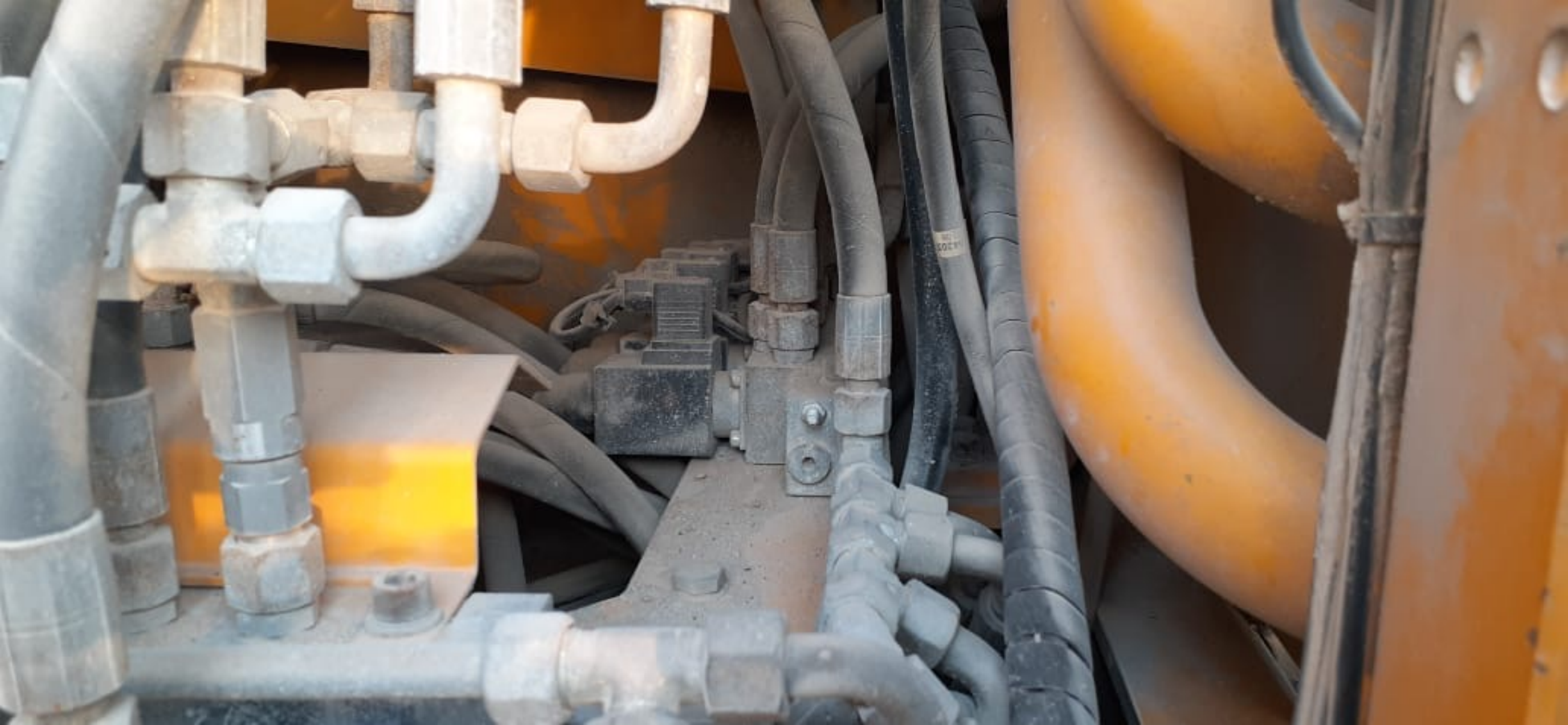
Operating Hours

P Mode	7138:03	Low speed Travel Mode	424:57
S Mode	15:08	High speed Travel Mode	11:09
E Mode	764:49		
U Mode	10:54		
Digging Mode	7927:32		
ATT Mode(Breaker)	1:23		
ATT Mode(Crusher)	0:00		

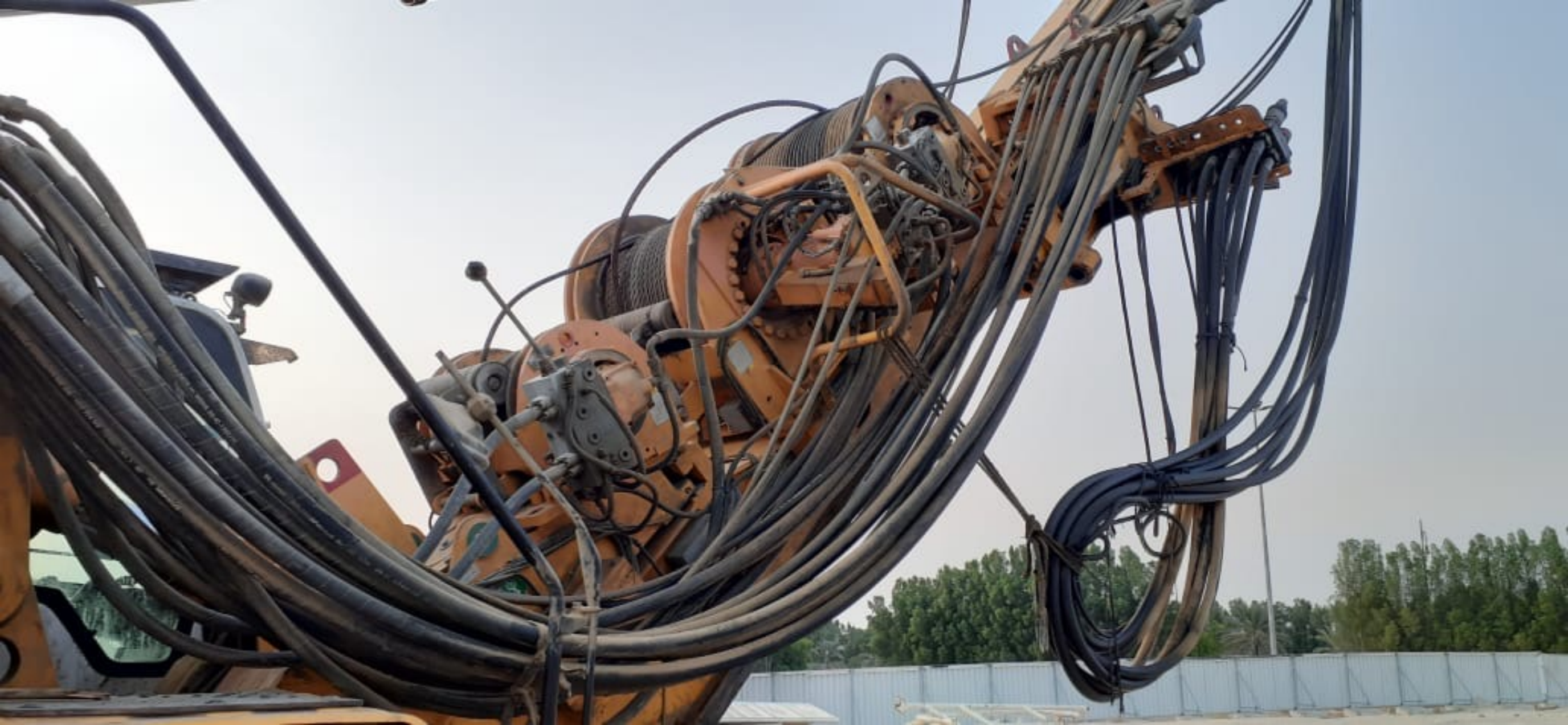
U

















A yellow and blue tracked excavator is shown from a rear-quarter perspective. The machine is parked on a sandy or gravelly surface. The side of the yellow body features the text 'BAUER BG 25' in large, bold, blue letters. Below this, a blue decorative swoosh runs along the side. The tracks are made of metal links and are partially buried in the sand. In the background, there are trees, a white building, and another smaller yellow tracked excavator. The sky is clear and blue.

BAUER BG 25







BAUER BG 25











Handwritten text on a paper taped to the dashboard, including a date and some illegible characters.

Warning label on the window with text and symbols, including the word 'LADUNYK'.



