



11H03

TIDA

S/N 0010329238

9-0884

2954





SER NO **RRAD1645**

ENGINE MODEL **C13**

MODIFICATION NO **SEE ORDER**

MAX **2100 M**

ALT **5850 FT**

AR NO -

ECM SOFTWARE **367-8484**

CORE AR **360-5974**

ELECTRONICS GP

DEM NO

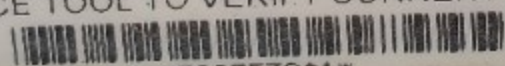
PERF SPEC **OK-6070**

FLS (INTERCEPT) **50**

FTS (SLOPE) **-52**

CERTIFICATION RATING **475** HP **354.0** KW

USE SERVICE TOOL TO VERIFY CURRENT ENGINE SETTINGS



322353841

322-3538 Fulfills 115-5852



ENERGY SERVICES
FRACTURING









MAXIMUM
RATE @ 1500 RPM
(mm³ / STROKE)
20
ELECTRONIC
CONTROL ENGINE

mm INTAKE

MAXIMUM
INITIAL TIMING
DEGREES BTDC
ELECTRONIC

LGK08143

0.64

mm EXHAUST

EXHAUST
EMISSION
CONTROL SYSTEM
EM, DI, TC, ECM, CAC

APPROVAL NO.

eIRL*97/68HA*2004/26*0060*09
AND CALIFORNIA REGULATIONS

MAXIMUM
RATE @ 1500 RPM
(mm³ / STROKE)
20
ELECTRONIC
CONTROL ENGINE

mm INTAKE

MAXIMUM
INITIAL TIMING
DEGREES BTDC
ELECTRONIC

LGK08143

0.64

mm EXHAUST

EXHAUST
EMISSION
CONTROL SYSTEM
EM, DI, TC, ECM, CAC

APPROVAL NO.

eURL*97/68HA*2004/26*0060*09
AND CALIFORNIA REGULATIONS

12.5ESK

ENGINE
MODEL

ENGINE MODEL C13

CATERPILLAR INC.

MAXIMUM
ADVERTISED

338 kW (HP)

DISPLACEMENT

2100

NON

12.5ESK





CATERPILLAR INC
FLEXIBILITY ENGINE

Engine Family ACPXL NO. 1ESK
Rated Advertised Power kW (HP) 556
Date of Manufacture NOV 2017 1746

THIS ENGINE COMPLIES WITH U.S. EPA EMISSION STANDARDS UNDER 40 CFR PART 101, EXCEPT WHERE SHOWN OTHERWISE.
SELLING OR INSTALLING THIS ENGINE FOR ANY PURPOSE OTHER THAN THAT FOR WHICH IT WAS DESIGNED MAY VIOLATE FEDERAL & STATE LAW SUBJECT TO CIVIL PENALTY.
Refer to operation and maintenance manual for recommendations.

IMPORTANT ENGINE INFORMATION

Engine Model CT3
Displacement 12.5
Engine Emission Approval Status
EM.D1.TC.FCM.CAC

CAUTION
PRECAUTION

11K07

T1DA

37N 6610333471



CJES-0863





R INC.

IMPORTANT ENGINE INFO

C13 - DISPLACEMENT : 12.5 L - VALVE LASH

MAXIMUM
RATED
SPEED (RPM)

2000

MAXIMUM
LOW IDLE
SPEED (RPM)

1200

MAX. FUEL
@MAXIM
(mm³/ST

RECT 1/68/EC FOR NON-ROAD ENGINES (<
005 A AND CALIFORNIA REGULATION
ATE O COMMERCIALY AVAILABLE DIESEL



CATERPILLAR

ENGINE MODEL :

ENGINE
FAMILY

MAXIMUM
ADVERTISED
kW (HP)

5CPXL12.5ESK

388 (520)

THIS C13 ENGINE CONFORMS TO DIRE

THIS C13 ENGINE CONFORMS TO 2005

THIS ENGINE IS CERTIFIED TO OPERATE C



MJT00092

275 5345

REMOVE ALL NUMBERS

T7K00047







07021

T10A

S/N 3320004057





LGK00797

0.54 mm EXHAUST

EXHAUST
EMISSION

INFORMATION

0.38 mm INTAKE

MAXIMUM

MAXIMUM

DEGREES

ELECTRO

TYPE APPROVAL

NON-ROAD COMPL

MJT00090

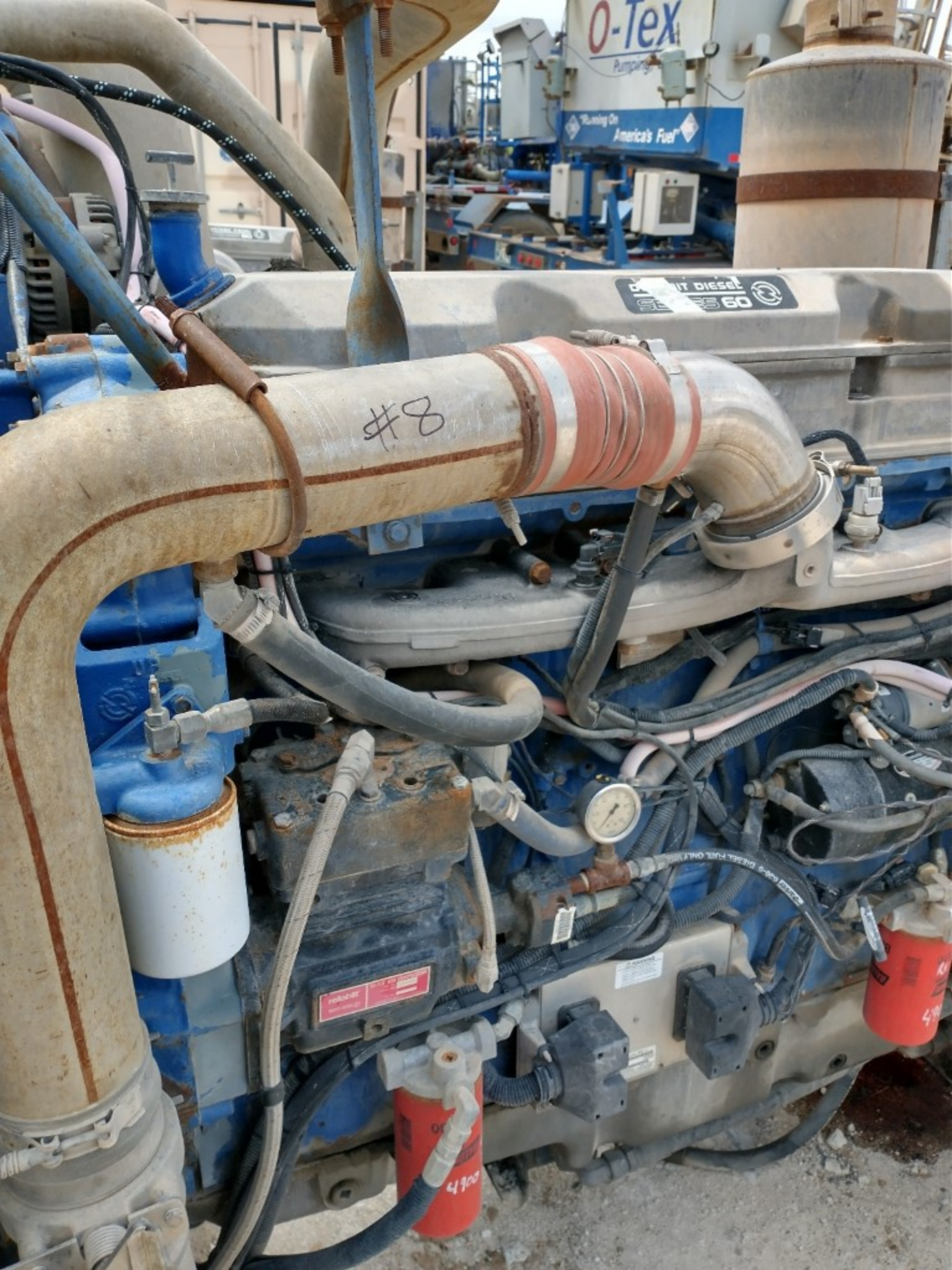
275 5345

ALWAYS GIVE ALL NUMBERS

CONVERTER
SERIAL NO.

T7K000045

6V-1720 7



O-Tex
Pumping

Running On
America's Fuel

Deutz diesel
SERIES 60

#8

Deutz diesel
SERIES 60

4900

4900

DETROIT DIESEL

REMANUFACTURING EAST



DATE **A06-12**

P/N **R23537412**

ENG. S/N **06RE133027**

ENG. M/N **6063HV39**

BORE **STD**

CRANK **STD**

WARRANTY VOID IF TAG REMOVED



A. ISOI
Indiana

transmission
, Indiana, USA

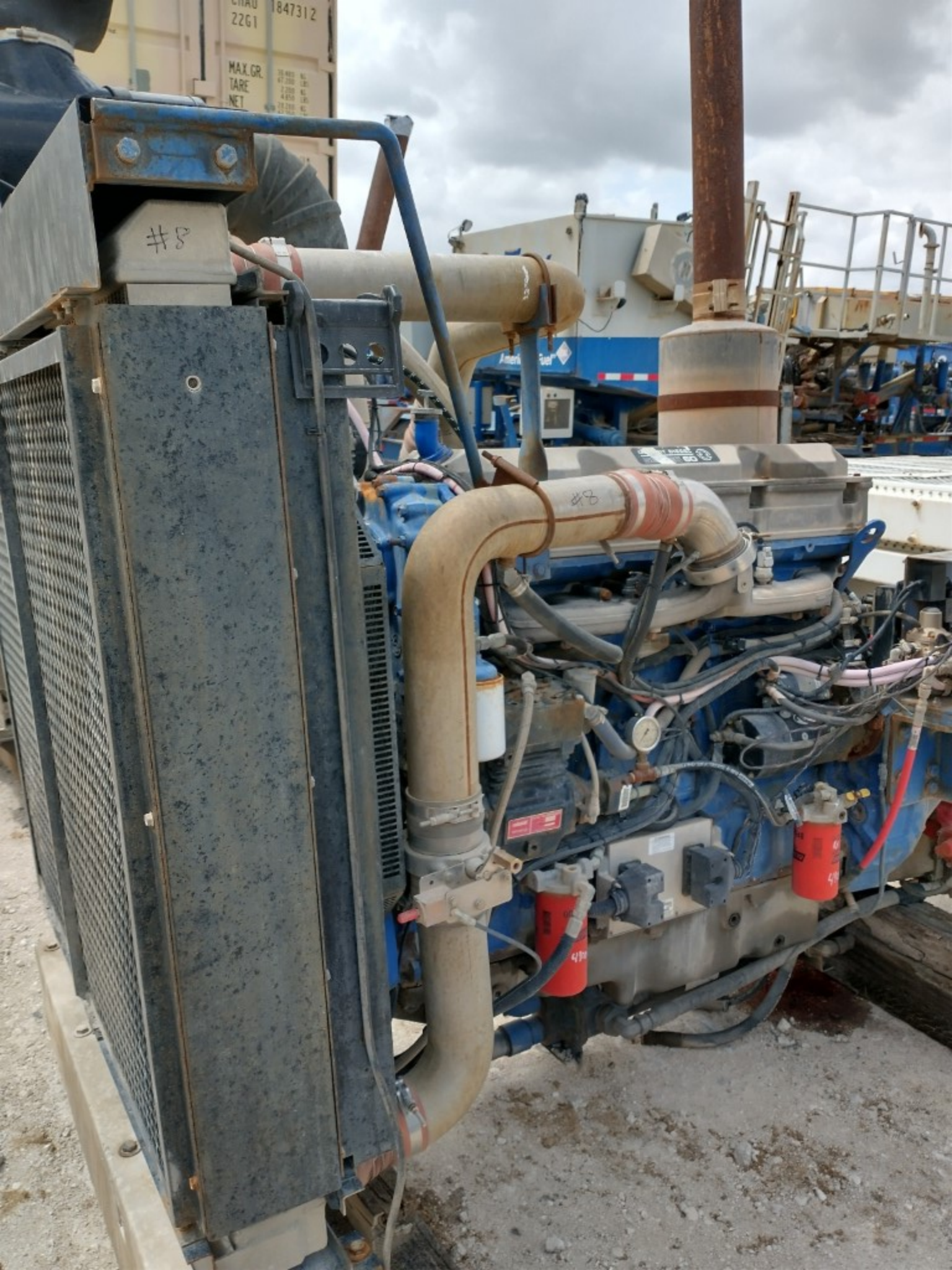


12E29

11DA

S/N 6610349353





MANUFACTURING EAST



DATE P/N
ENG. S/N ENG. M/N
BORE CRANK

WARRANTY VOID IF TAG REMOVED





12E28

T10A

S/N 0010049311

ALLISON TRANSMISSION/MAN NSG



A49078



CAT

SER NO. JTF02673

ENGINE MODEL C7

CERT NO.

ENGINE SALES MODEL

MODIFICATION SEE ORDER

MAX 3300 M
ALT 10827 FT

AR NO. 266-673

ELECTRONICS GP

CCREAR.

ECM SOFTWARE 291-2156

OEM NO.

PERF. SPEC OK-7244

FLS (INTERCEPT) -38

FTS (SLOPE) 40

ALV 300 HP 223.7 kW MAX HP kW

USE SERVICE TOOL TO VERIFY CURRENT ENGINE SETTINGS

2005055 H41





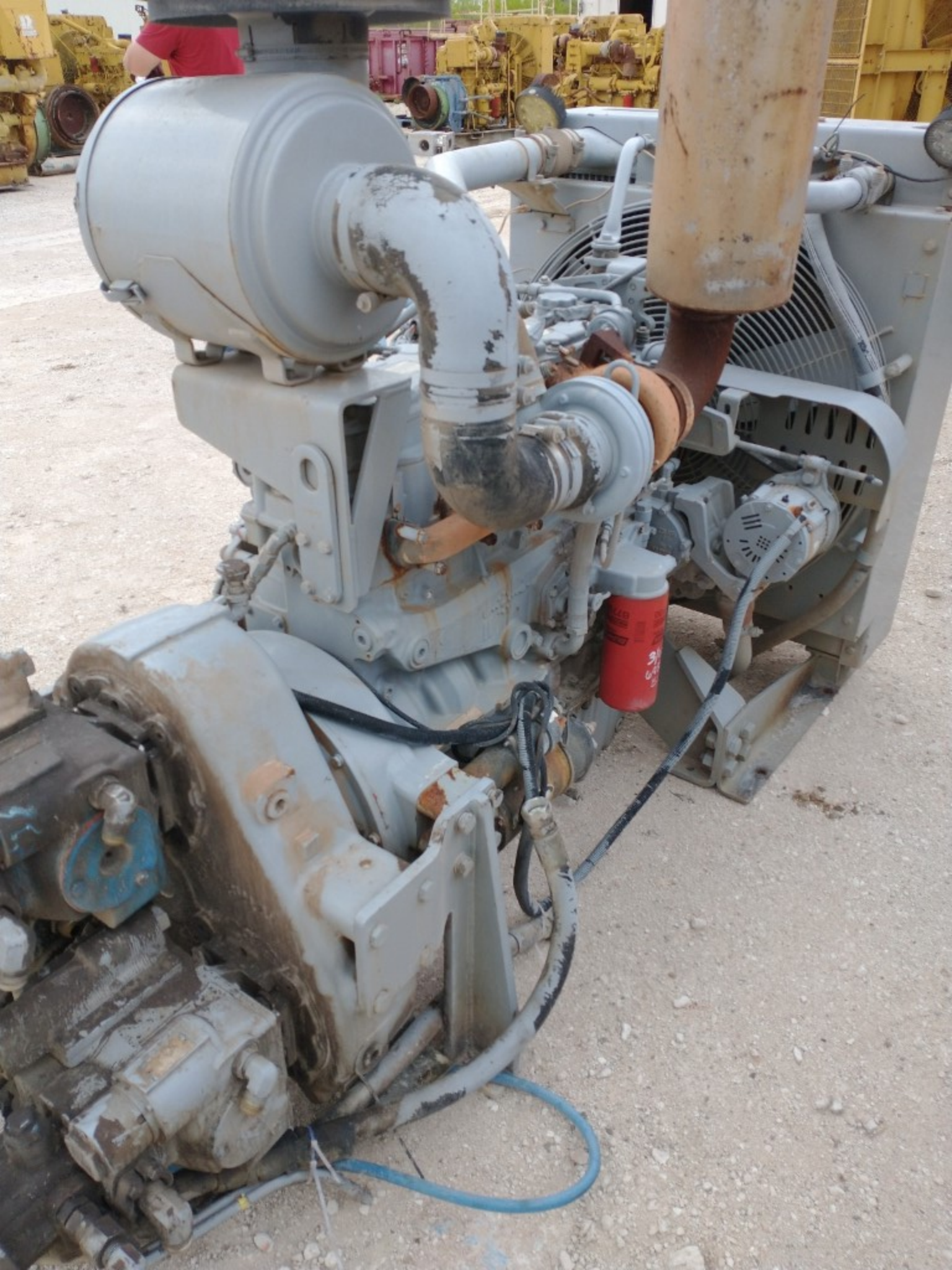


CJES-0885

CAT
C7 ACERT

CAT IMPORTANT ENGINE INFORMATION
IMO COMPLIANT
This Engine conforms to the IMO Regulation
Engine Conforms with the Nitrogen Oxide
Annex VI of MARPOL 73/78 or Revised Annex
Certification Requires purchase of an ECU
Organization











ISUZU

IMPORTANT ENGINE INFORMATION
ISUZU MOTORS LTD. MADE IN JAPAN

ENGINE FAMILY : GSXL07.8HXA

ENGINE CODE : 6HK1XDHA-02

MODEL : AH-6HK1X

ENGINE DISPLACEMENT : 7755 cm³

: 475 IN³

EXHAUST EMISSION

CONTROL SYSTEM : ECM, TC, CAC, DFL, EGR

★ ENGINE SPECIFICATION

ADVERTISED HORSE POWER

SAE NET (FAN DISENGAGED)

212.1 kW / 2000 RPM

284.4 HP / 2000 RPM

FUEL RATE

153.4 mm³/st.

VALVE LASH (COLD)

IN 0.4 mm.

EXH 0.4 mm.

INITIAL INJECTION

TIMING — BTDC

CURB IDLE : 800 RPM

(★ MODEL SPECIFICATION

SEE SERVICE MANUAL)

THIS ENGINE IS CERTIFIED TO
OPERATE ON DIESEL FUEL

THIS ENGINE CONFORMS TO 2006

MODEL YEAR U.S. EPA NON-ROAD

DIESEL ENGINES AND CALIFORNIA

OFF-ROAD CI ENGINES REGULATION.

P. NO. 1858754650

ISUZU

IMPORTANT ENGINE INFORMATION
ISUZU MOTORS LTD. MADE IN JAPAN

ENGINE FAMILY NAME 6HK1XDHA

ENGINE TYPE 6HK1XDHA

ENGINE I.D. NUMBER 6HK1-

TYPE APPROVAL NUMBER

e4'97/68HA'2004/26'0019'00

P. NO. 1858754650

国土交通省型式指定番号 ⑤ GS-348

指定に係る一酸化炭素等発散防止装置

いすゞ 6HK1XDHA ディーゼル機関

8980614650

