





IMPORTANT ENGINE INFORMATION

ENGINE FAMILY

6DZAL06.5074

MODEL

TCD914L06

POWER
HP kW

174 129.9

RPM

2300

VALVE LASH (mm)
IN EX

0.15 0.15

ENGINE DISPLACEMENT
(LITERS)

06.472

INJ. TIMING
(° BTDC)

4.0

INJ. RATE
(mm³/STROKE)

0910

THIS ENGINE IS CERTIFIED TO OPERATE ON DIESEL FUEL

REM

[REDACTED]

THIS ENGINE CONFORMS TO

7008

MODEL YEAR US EPA /

CARE

REGULATION FOR LARGE NONROAD COMPRESSION-IGNITION ENGINES



01223255





CATERPILLAR

P.1-315

WARNING
HIGH VOLTAGE

WARNING
HIGH VOLTAGE

WARNING
NEVER
OPERATE
WITHOUT
PROPER
TRAINING

WARNING
NEVER
OPERATE
WITHOUT
PROPER
TRAINING



19.1-317

SIEMENS

DANGER
HIGH VOLTAGE

DANGER
HIGH VOLTAGE

38-477

NOV NATIONAL OILWELL VARCO

FD-1600 PUMP

SERIAL NO. 1111

PERFORMANCE AT MAXIMUM 1600 HP INPUT @ 120 RPM

PISTON SIZE	7	6½	6	5¾	5½
-------------	---	----	---	----	----

PRESSURE P.S.I.	3428	3981	4665	5000	5000
-----------------	------	------	------	------	------

LUBRICATION SPECIFICATIONS

USE EXTREME PRESSURE NON-CORROSIVE
ANTI FOAMING GEAR LUBRICANT AS FOLLOWS
TEMP 0°F TO 155°F AGMA NO. 6 E.P.
TEMP -20°F TO 40°F AGMA NO. 4 E.P.
(CONSULT LUBRICATION MANUAL)

CRANKCASE CAPACITY 100 GALLONS

















WARNING
ADVERTENCIA

Quincy







ATTENTION

128











NOTICE
RETURN TOOLS
WHERE THEY
BELONG



NOTICE
RETURN TOOLS
WHERE THEY
BELONG

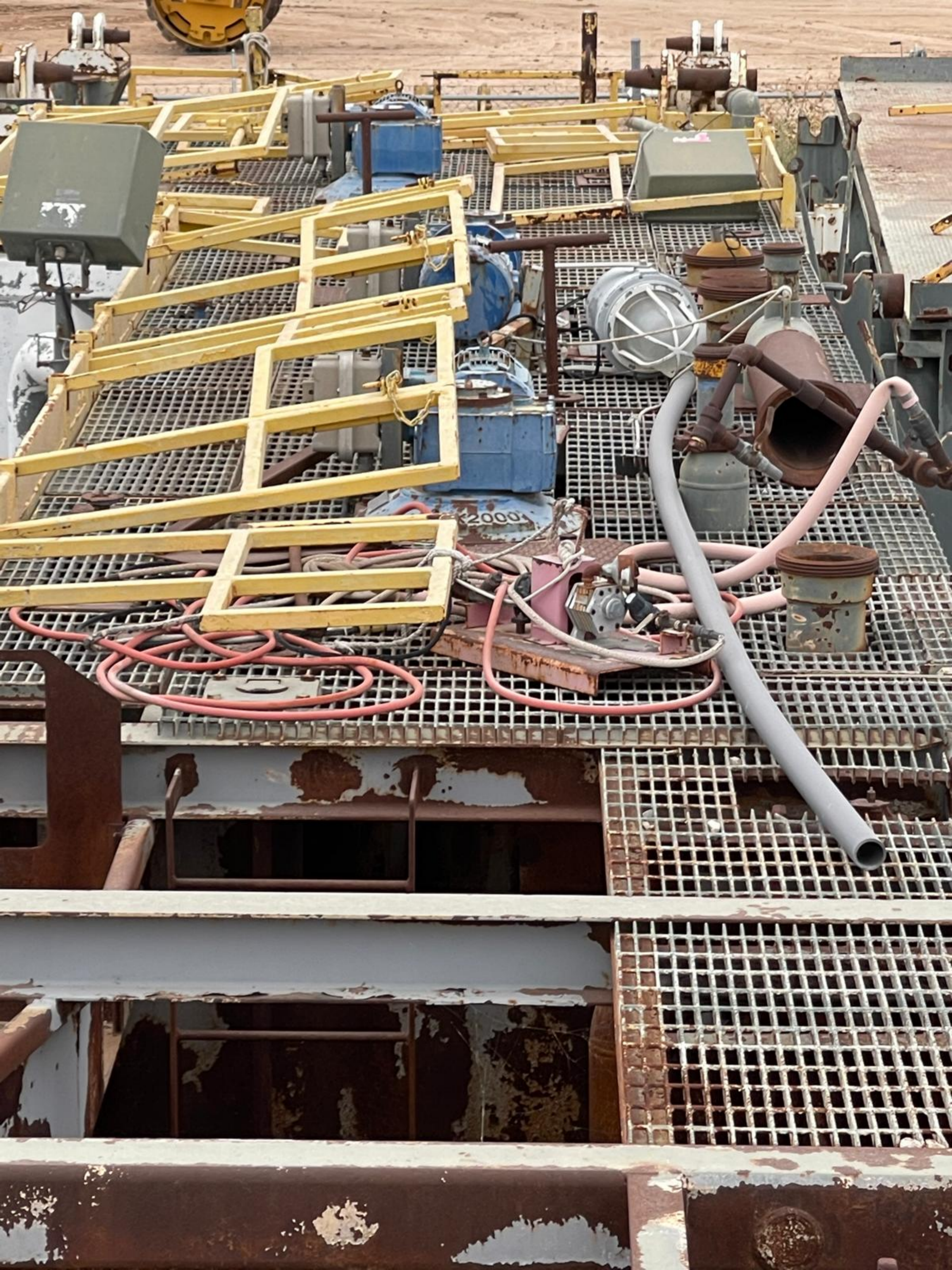


























47-372







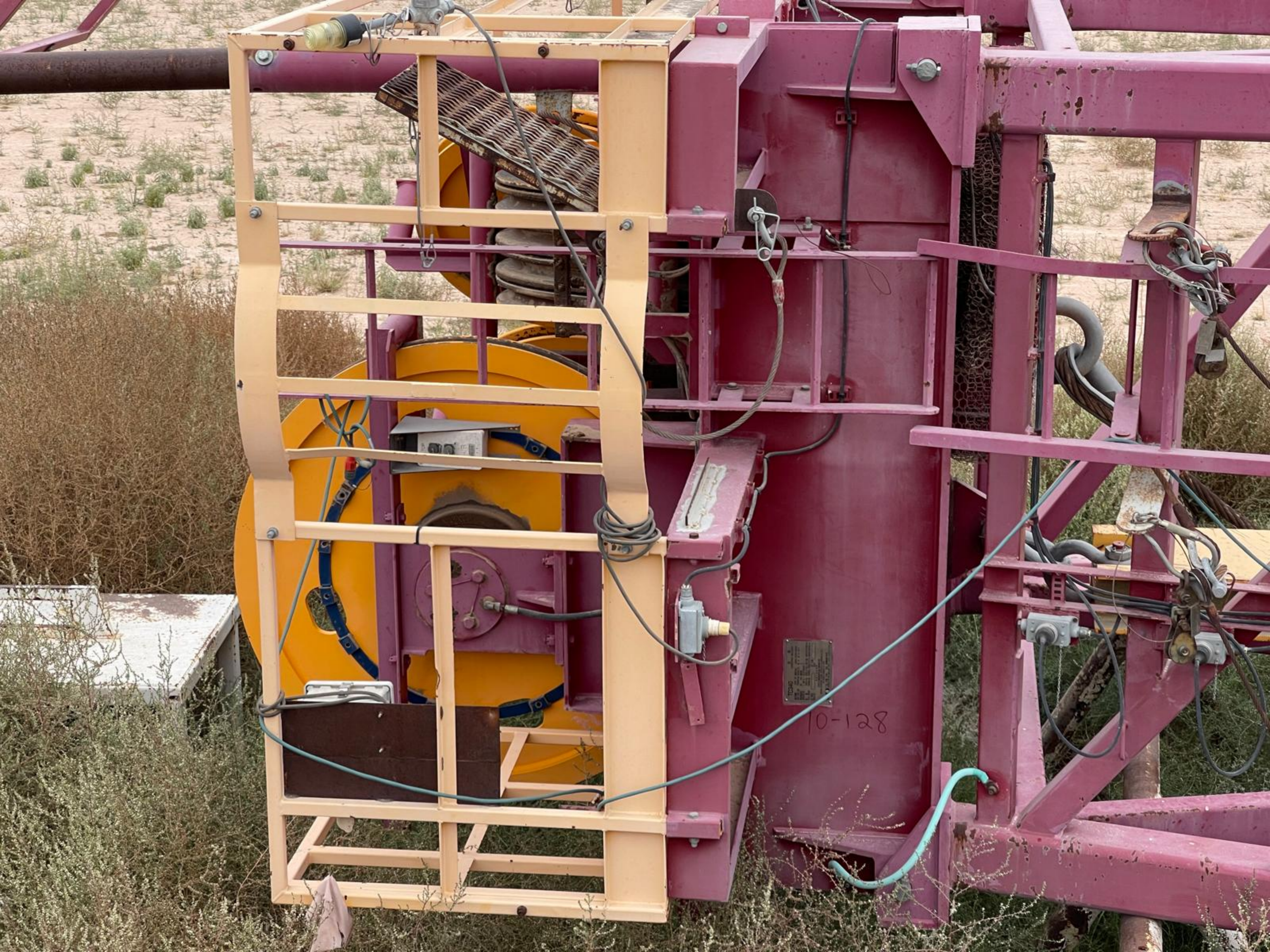












10-128





TC340

MADE IN
 CHINA
 BY
 SHENZHEN
 HONGKONG
 ELECTRONIC
 CO., LTD.
 2/F, HONGKONG
 ELECTRONIC
 CO., LTD.
 HONGKONG
 CHINA

MADE IN
 CHINA
 BY
 SHENZHEN
 HONGKONG
 ELECTRONIC
 CO., LTD.
 2/F, HONGKONG
 ELECTRONIC
 CO., LTD.
 HONGKONG
 CHINA

MADE IN
 CHINA
 BY
 SHENZHEN
 HONGKONG
 ELECTRONIC
 CO., LTD.
 2/F, HONGKONG
 ELECTRONIC
 CO., LTD.
 HONGKONG
 CHINA

MADE IN
 CHINA
 BY
 SHENZHEN
 HONGKONG
 ELECTRONIC
 CO., LTD.
 2/F, HONGKONG
 ELECTRONIC
 CO., LTD.
 HONGKONG
 CHINA

10-128





LOAD

volvo

010

Best





