

A large, multi-level offshore oil rig structure, primarily painted in yellow and grey. The structure features several platforms with yellow safety railings and a prominent yellow crane arm extending from the upper left. A set of yellow stairs leads up to one of the platforms. The background shows a clear blue sky and a distant horizon. The text 'www.PetroRigs.com' is overlaid in the center of the image.

www.PetroRigs.com

www.PetroRigs.com



www.PetroRigs.com



The image shows a close-up of industrial machinery, likely a hydraulic system. Two large, yellow-painted hydraulic cylinders are mounted on a base. They are connected to a network of black hydraulic hoses. In the foreground, a yellow metal plate holds a row of approximately 15 orange-colored hydraulic caps or valves. The machinery is situated in an industrial environment, with a metallic surface visible at the bottom of the frame. A watermark is overlaid on the center of the image.

www.PetroRigs.com

NOV NATIONAL OILWELL VARCO

Tag.No : 3D61100

Project : V2454
Year : 2010
Machine No. : V2454-0910
Model No. : OC3932KCE
Crane type : Knuckle Boom Crane
Weight : 140.000 kg
Design authority : ABS
Id Number : ABS ID / YY195049
SWL & working radius : 17 t @ 42m, 1 fall
: 34 t @ 39m, 2 fall
: 85 t @ 18m, 5 fall

NATIONAL OILWELL NORWAY AS
N-4604 Kristiansand

www.nov.com

www.PetroRigs.com



NOV NATIONAL OILWELL VARCO

Tag.No : 3D61300

Project : V2456
Year : 2010
Machine No. : V2456-0910
Model No. : OC3932KCE
Crane type : Knuckle Boom Crane
Weight : 140 000 kg
Design authority : ABS
Id Number : ABS ID / YY195049
SWL & working radius : 17 t @ 42m, 1 fall
: 34 t @ 39m, 2 fall
: 85 t @ 18m, 5 fall

NATIONAL OILWELL NORWAY AS
N-4604 Kristiansand

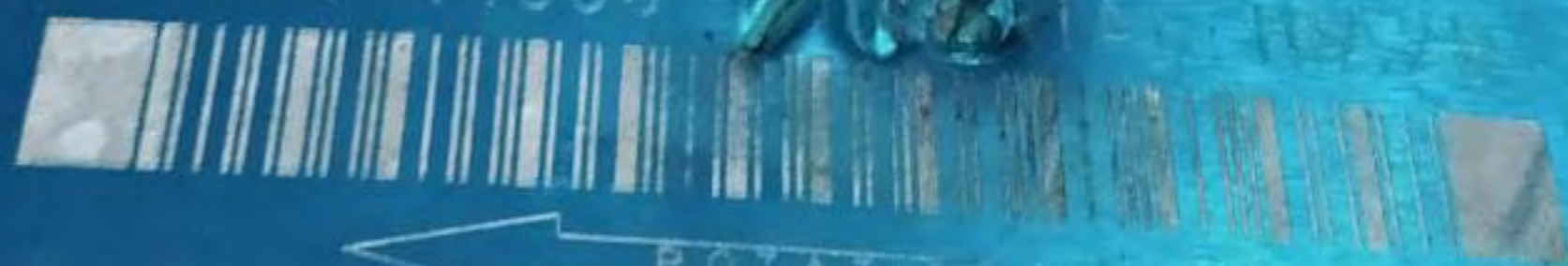
www.nov.com

www.PetroRigs.com

034-30873-A

DENISON hydraulics

MODEL: T6CM B28 3P
CODE: 024-44330



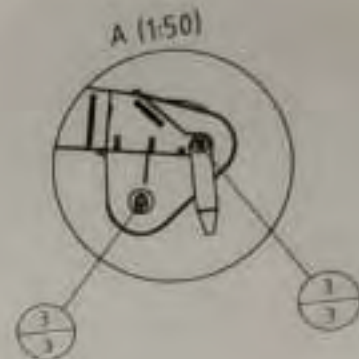
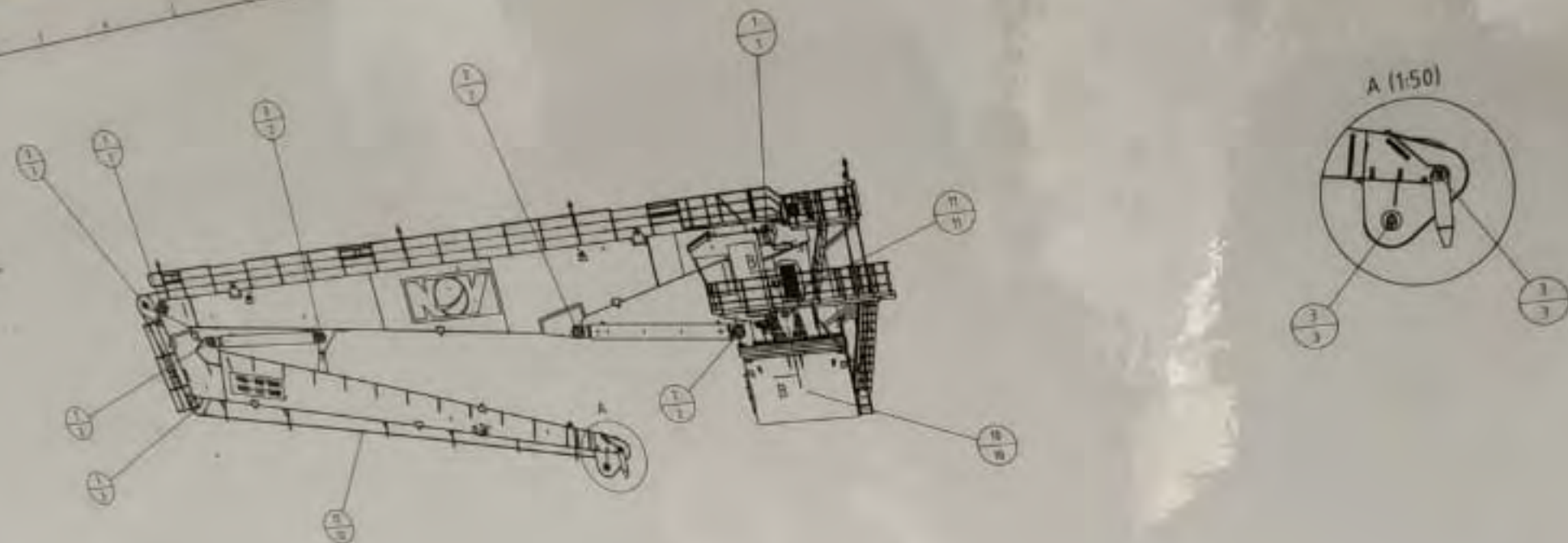
← ROTATION

MADE IN FRANCE



www.PetroRigs.com

www.PetroRigs.com



NO.	DESCRIPTION	QUANTITY	UNIT	REMARKS	PERIOD	PERCENTAGE
1	BOOM	1	PC	WELDING	EVERY 6 MONTHS	10%
2	WHEELS	2	PC	WHEELS	EVERY 6 MONTHS	10%
3	WHEEL RINGS	2	PC	WHEEL RINGS	EVERY 6 MONTHS	10%
4	WHEEL BEARINGS	4	PC	WHEEL BEARINGS	EVERY 6 MONTHS	10%
5	WHEEL HOUSINGS	2	PC	WHEEL HOUSINGS	EVERY 6 MONTHS	10%
6	WHEEL RINGS	2	PC	WHEEL RINGS	EVERY 6 MONTHS	10%
7	WHEEL BEARINGS	4	PC	WHEEL BEARINGS	EVERY 6 MONTHS	10%
8	WHEEL HOUSINGS	2	PC	WHEEL HOUSINGS	EVERY 6 MONTHS	10%
9	WHEEL RINGS	2	PC	WHEEL RINGS	EVERY 6 MONTHS	10%
10	WHEEL BEARINGS	4	PC	WHEEL BEARINGS	EVERY 6 MONTHS	10%
11	WHEEL HOUSINGS	2	PC	WHEEL HOUSINGS	EVERY 6 MONTHS	10%

NO.	DESCRIPTION	QUANTITY	UNIT	REMARKS	PERIOD	PERCENTAGE
1	BOOM	1	PC	WELDING	EVERY 6 MONTHS	10%
2	WHEELS	2	PC	WHEELS	EVERY 6 MONTHS	10%
3	WHEEL RINGS	2	PC	WHEEL RINGS	EVERY 6 MONTHS	10%
4	WHEEL BEARINGS	4	PC	WHEEL BEARINGS	EVERY 6 MONTHS	10%
5	WHEEL HOUSINGS	2	PC	WHEEL HOUSINGS	EVERY 6 MONTHS	10%
6	WHEEL RINGS	2	PC	WHEEL RINGS	EVERY 6 MONTHS	10%
7	WHEEL BEARINGS	4	PC	WHEEL BEARINGS	EVERY 6 MONTHS	10%
8	WHEEL HOUSINGS	2	PC	WHEEL HOUSINGS	EVERY 6 MONTHS	10%
9	WHEEL RINGS	2	PC	WHEEL RINGS	EVERY 6 MONTHS	10%
10	WHEEL BEARINGS	4	PC	WHEEL BEARINGS	EVERY 6 MONTHS	10%
11	WHEEL HOUSINGS	2	PC	WHEEL HOUSINGS	EVERY 6 MONTHS	10%

4 kg
5 kg
AR -35 kg
TIME -10 kg
NG
NING
NING
RUNNING
-3 kg
HALF A YEAR -10 kg
HALF A YEAR -5 kg
E TIME; ALSO -25 kg
GED PERIODS
00 HOURS/HALF

Rev	Date	Description	AMH	FRO	FRO
2	07.08.2009	Reissued for Construction	AMH	FRO	FRO
1	20.01.2009	Reissued for Construction	AMH	IAN	FRO
0	12.08.2008	Issued for Construction	JAN	KISP	FRO
			Made	Checked	Appr

THIS DOCUMENT CONTAINS PROPRIETARY AND CONFIDENTIAL INFORMATION WHICH BELONGS TO NATIONAL OILWELL VARCO. IT IS LOANED FOR LIMITED PURPOSES ONLY AND REMAINS THE PROPERTY OF NATIONAL OILWELL VARCO. REPRODUCTION, IN WHOLE OR IN PART, OR USE OF THIS DESIGN OR DISTRIBUTION OF THIS INFORMATION TO OTHERS IS NOT PERMITTED WITHOUT THE EXPRESS WRITTEN CONSENT OF NATIONAL OILWELL VARCO. THIS DOCUMENT IS TO BE RETURNED TO NATIONAL OILWELL VARCO UPON REQUEST AND IN ANY EVENT UPON COMPLETION OF USE FOR WHICH IT WAS LOANED.

NOV NATIONAL OILWELL VARCO
 National Oilwell Norway AS
 SERVICEBOX 401, KORSVIK FJORDEN
 N-4604 KRISTIANSAND, NORWAY

Title:
LUBRICATION CHARTS
OC3932KM02 KNUCKLE BOOM CRANE

Scale: 1:1	Projection: 1st Angle	Main Part:
Drawing Number: OC3932KM02-L0001	Sheet: 1/1	Revision: 2

www.PetroRigs.com

G

H

8

9

11

12



www.PetroRigs.com

Rev	Date	Description	Made	Checked	Appr.
2	07.08.2009	Reissued for Construction	AMH	FRO	FRO
1	20.01.2009	Reissued for Construction	AMH	JAN	FRO
0	12.08.2008	Issued for Construction	JAN	KISP	FRO

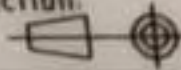
THIS DOCUMENT CONTAINS PROPRIETARY AND CONFIDENTIAL INFORMATION WHICH BELONGS TO NATIONAL OILWELL VARCO. IT IS LOANED FOR LIMITED PURPOSES ONLY AND REMAINS THE PROPERTY OF NATIONAL OILWELL VARCO. REPRODUCTION, IN WHOLE OR IN PART, OR USE OF THIS DESIGN OR DISTRIBUTION OF THIS INFORMATION TO OTHERS IS NOT PERMITTED WITHOUT THE EXPRESS WRITTEN CONSENT OF NATIONAL OILWELL VARCO. THIS DOCUMENT IS TO BE RETURNED TO NATIONAL OILWELL VARCO UPON REQUEST AND IN ANY EVENT UPON COMPLETION OF USE FOR WHICH IT WAS LOANED

NOV NATIONAL OILWELL VARCO

National Oilwell Norway AS
 SERVICEBOX 401, KORSVIKFJORDEN
 N-4604 KRISTIANSAND, NORWAY

Title:
 LUBRICATION CHARTS
 OC3932KM02 KNUCKLE BOOM CRANE

H


Scale: 1:100	Projection: 	Size: A1	Main Part:
Drawing Number: OC3932KM02-L0001	Sheet: 1/1	Revision: 2	

11

12

www.PetroRigs.com



 NATIONAL OILWELL VARCO
3D613-IB001
CONTROL CABINET
KNUCKLE BOOM CRANE

www.PetroRigs.com



A large yellow industrial machine, likely a hydraulic press or similar equipment, is mounted on a yellow metal base. The machine features several thick, black hydraulic hoses connected to various ports. In the foreground, a row of orange safety caps is visible, covering numerous ports on the base. The background shows a yellow wall and a metal grate floor, suggesting an industrial or offshore rig environment. A watermark is overlaid on the image.

www.PetroRigs.com



www.PetroRigs.com

www.PetroRigs.com





www.PetroRigs.com



www.PetroRigs.com

www.PetroRigs.com



A large, complex industrial hydraulic pump assembly is mounted on a yellow metal panel. The pump has a cylindrical body with several horizontal sections and a top section with various ports and connections. Numerous black hoses of different diameters are connected to the pump, some with blue and white fittings. A yellow handle is attached to the side of the pump. The background shows a metal grate ceiling. In the foreground, several orange and red components are visible on a grey surface.

www.PetroRigs.com



www.PetroRigs.com

A large yellow crane is the central focus of the image, extending from the bottom left towards the top right. The crane has a white operator's cabin and is supported by a complex structure of yellow metal beams and railings. In the background, another crane is visible, and the sky is a clear, bright blue. The overall scene is an industrial offshore environment.

www.PetroRigs.com

011
2

DB DAVID BROWN
BENZLERS

Spec.No

RE3513/08-DB

Serial.No

07090008

Ratio

www.PetroRigs.com

www.PetroRigs.com



 NATIONAL OILWELL VARCO

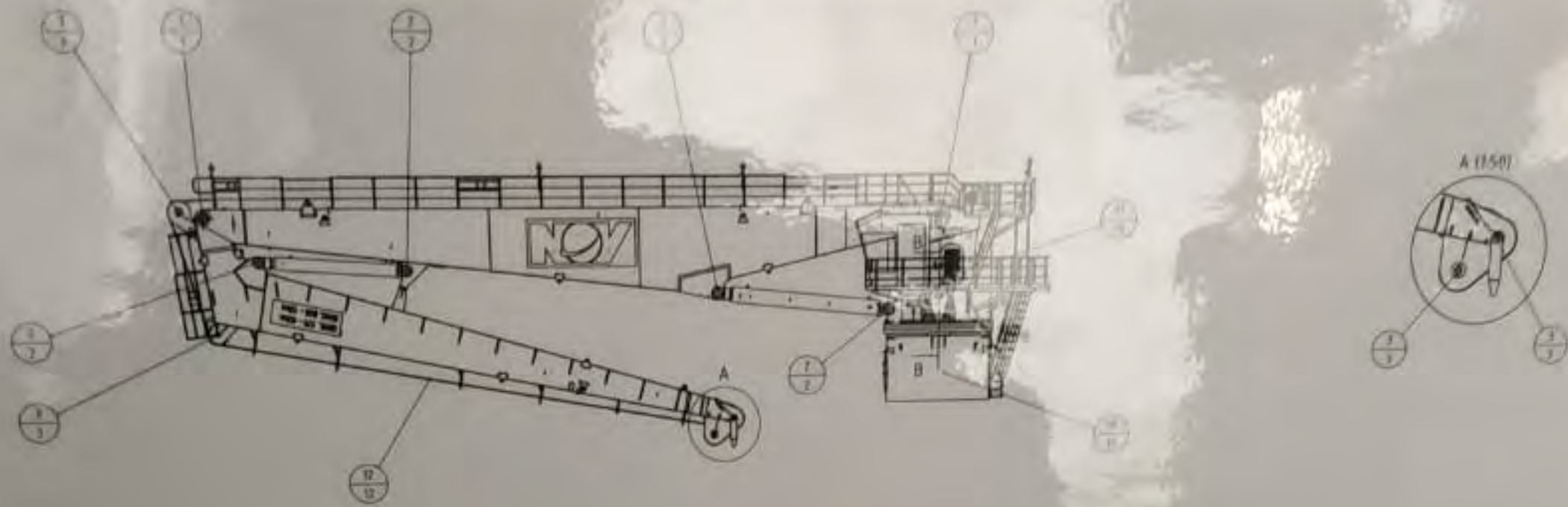
ITEM NO	:	155318
PROJECT NO	:	V2456
W	:	515 BAR
TP	:	472.5 BAR
SERIAL NO	:	C34

www.PetroRigs.com

112113
E10K



www.PetroRigs.com



www.PetroRigs.com

Eqpt	Lubrication Point	Quantity	Lubrication Instruction	LUBRICATION DATA		Frequency	Weekly Average
				Lubricant Type	Necessary Qty		
1	BOOM BEARINGS	4	GREASE BOLTS & INDEX BEARINGS	MULTIFAK EP 2	-0.5 kg	DURING INSTALLATION & EVERY 6 MONTH	-2 kg
2	CHARGE CYLINDER BEARINGS	8	GREASE BOLTS & INDEX BEARINGS	MULTIFAK EP 2 or white	-0.5 kg	DURING INSTALLATION & EVERY 6 MONTH	-4 kg
3	DRIVE SHEAVE & BOLTS	4	GREASE NIPPLES	MULTIFAK EP 2 or white	-0.5 kg	EVERY RUNNING 200 HOURS OR HALF A YEAR	-4 kg
4	SWAY BEARING	36	GREASE NIPPLES	MULTIFAK EP 2	-2 kg	EVERY RUNNING 100 HOURS OR HALF A YEAR	-20 kg
5	SWAY BEARING RACK & PINION	1	WASH ON ALL TEETH	ALBERTOLAN FLOSCON CA 3034 SLK white	-0.5 kg	WEEKLY KEEP WELL GREASED ALL THE TIME	-0.5 kg
6	SWAY GEAR & SWAY BRAKE	4	CHECK LEVEL ON THE LEVEL GLASS	80 VS 200 TEARCO MEROPLA 200	12.8 l	CHANGE AFTER FIRST 5000 RUNNING HOURS, THEREAFTER EVERY 2000 RUNNING HOURS OR EVERY YEAR	-12.8 l
7	SWAY GEAR BEARING	4	GREASE POINT	MINERAL LEX Green NLGI 2 - HSE	-0.5 kg	EVERY YEAR	-2 kg
8	WINCH GEAR	2	CHECK LEVEL ON THE LEVEL GLASS or FILLING PLUG	80 VS 200 TEARCO MEROPLA 200	12.8 l	CHANGE AFTER FIRST 5000 RUNNING HOURS, THEREAFTER EVERY 2000 RUNNING HOURS OR EVERY YEAR	-12.8 l
9	WINCH BEARING	2	GREASE NIPPLES	MULTIFAK EP 2 or white	-0.5 kg	EVERY RUNNING 200 HOURS OR HALF A YEAR	-2 kg
10	SL MOTOR	2	GREASE NIPPLES	MULTIFAK EP 2 or white	-0.5 kg	EVERY RUNNING 200 HOURS OR HALF A YEAR	-2 kg
11	HATCHES	6	GREASE NIPPLES	MULTIFAK EP 2 or white	-0.5 kg	EVERY RUNNING 200 HOURS OR HALF A YEAR	-3 kg
12	WIRE	4		SHALIZ A or white	-5 kg	KEEP WELL OILED ALL THE TIME ALSO WHEN NOT USED. REOILED PERIODICALLY SAMPLE ANALYSIS EVERY 500 HOURS HALF A YEAR	-20 kg
13	HYDRAULIC OIL	1	TEL. OIL	TEARCO DUNED HSE	200 l		

LUBRICATION CHARTS	
Eqpt	Frequency
1	6 MONTH
2	6 MONTH
3	6 MONTH
4	6 MONTH
5	6 MONTH
6	6 MONTH
7	6 MONTH
8	6 MONTH
9	6 MONTH
10	6 MONTH
11	6 MONTH
12	6 MONTH
13	6 MONTH