

# R. K. Pipe & Supply, LLC

# ACE



## Machine Fabrication & Construction, LLC

### WORK ORDER

#52357

### RIG NUMBER & LOCATION

### EQUIPMENT DESCRIPTION

NATIONAL C-375, ROTARY TABLE  
S/N #6147

—  
ACE MACHINE & FABRICATION, INC.  
2706 W. Admiral Doyle Dr.  
New Iberia, LA 70560  
Phone: 337-369-6100  
Fax: 337-369-6122

DECEMBER 9, 2015

Equipment Reviewed By *Curtis Sr.* Quality Control Manager

Table of Contents

<u>Description</u>	<u>Section</u>
<i>Work Order</i>	<i>1</i>
<i>Purchase Order</i>	<i>2</i>
<i>Inspection Report</i>	<i>3</i>
<i>Job Order</i>	<i>4</i>
<i>Photographs</i>	<i>5</i>
<i>A.P.I. Certificates</i>	<i>6</i>
<i>Certificate of Liability Insurance</i>	<i>7</i>

*Work Order*

Ace Machine, Fabrication &  
 Construction, LLC  
 2706 W. Admiral Doyle Dr.  
 New Iberia, LA 70560  
 Phone 337-369-6100  
 Fax 337-369-6122

COM  DEL  INV

# Work Order

Customer  
 R. K. Pipe & Supply, LLC  
 4115 S. Lewis  
 New Iberia, LA 70560

Date	12/9/2015	W.O. No.	52357
LOCATION			
WELL / RIG			
COUNTY / PARISH	IBERIA PARISH		
LAND	<input type="checkbox"/>	WATER	<input type="checkbox"/>
CHARGE	<input type="checkbox"/>	N/C	<input type="checkbox"/>

Customer P.O. # 13370

Ordered By CURTIS LEBLANC

Customer's Rep DAVID KELLY

Customer Phone 337-367-9224

Quantity	Description	Rate	Amount
	<p>(1) NATIONAL C-375 - 37-1/2" X 53-1/4" - ROTARY TABLE - S/N #6147            PICK UP ROTARY TABLE AT R.K. PIPE YARD            HAUL TO ACE MACHINE            TEAR DOWN ROTARY TABLE DOWN TO THE BEARINGS            RUSSELL AND DERRICK CAME TO ACE MACHINE TO DO A VISUAL INSPECTION ON ALL COMPONENTS AND BEARINGS. CLEARANCES ALL OF THE ABOVE LIKE NEW CONDITION.            NOV TUBOSCOPE CAME TO ACE MACHINE TO MPI THE RING GEAR, ROTATING MEMBER; PINION GEAR AND PINION SHAFT            ALL OF THE ABOVE FOUND TO BE FREE OF CRACKS AND OR DEFECTS.            CUSTOMER FURNISHED NEW PINION SHAFT SEALS USED ALL OF THE SAME BEARINGS TO REASSEMBLE ROTARY SET AND ADJUST BEARING TO FACTORY SPECS.            ROTATE ROTARY, IT SPUN VERY WELL AND FREELY            PAINT ROTARY NATIONAL BLUE AND TAG NO OIL ON PINION SHAFT SIZE            RETURN TO R.K. PIPE ON 12-11-15</p>		
Terms	Net 30	<b>Subtotal</b>	\$0.00
Customer Signature	Date	<b>Sales Tax (8.25%)</b>	\$0.00
		<b>Total</b>	\$0.00

*Inspection Report*



CUSTOMER: RK PIPE  
 RIG  
 JOB NUMBER: PO# 13370  
 LOCATION



WO#  
 DATE: Dec. 1, 2015  
 COMMENTS:

NO.	QTY.	COMPONENT DESCRIPTION	INSPECTION TYPE	ACC/REJ	INSPECTION RESULTS NOTATIONS
1	1	National C-37-1/2" x 53-1/4" Rotary Table			
2		SN# 6147			
3					
4		Ring Gear	MPI	ACC	Found to be free of CRACKS and or DEFECTS
5		Rotating Member	MPI	ACC	Found to be free of CRACKS and or DEFECTS
6		Pinion Gear	MPI	ACC	Found to be free of CRACKS and or DEFECTS
7		Pinion Shaft	MPI	ACC	Found to be free of CRACKS and or DEFECTS
8					
9					
10					
11					
12					
13					
14					
15					
16					
17					
18					
19					
20					
21					
22					
23					
24					
25					

COMMENTS:

INSPECTOR: Edward Simon  
 (PLEASE PRINT)  
 INSPECTOR SIGNATURE

*Shipping & Receiving*





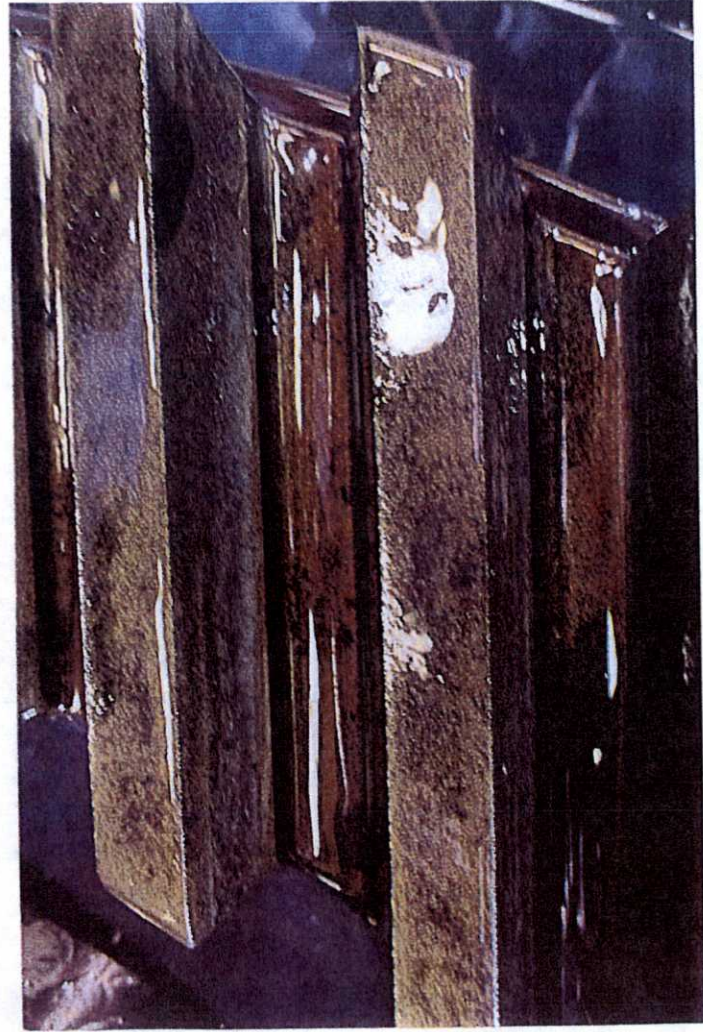
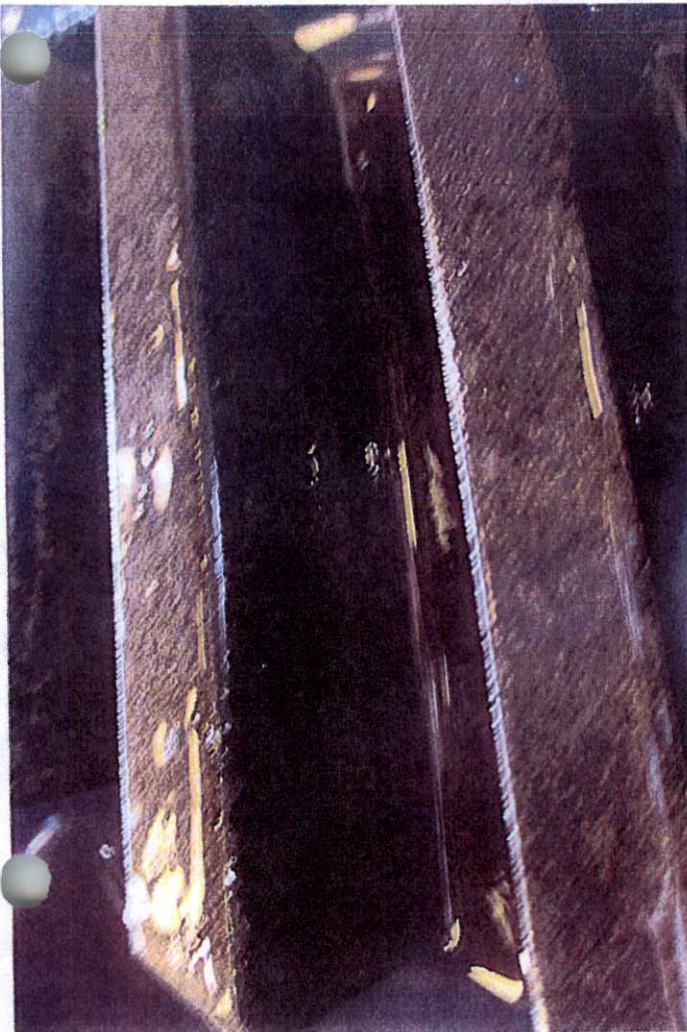


*Job Order*

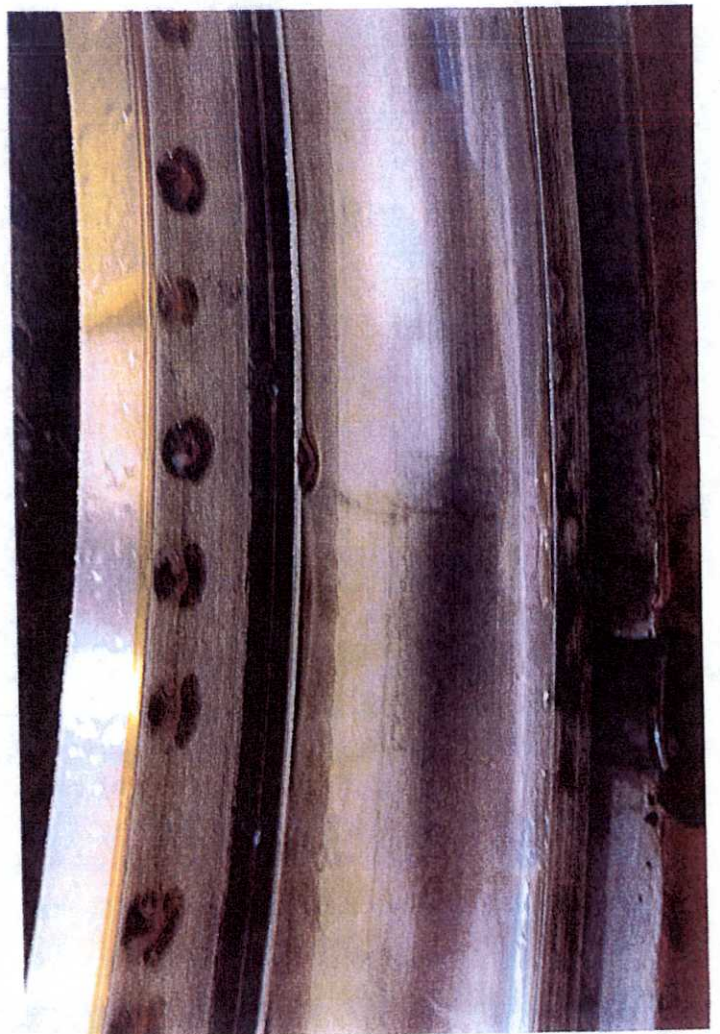
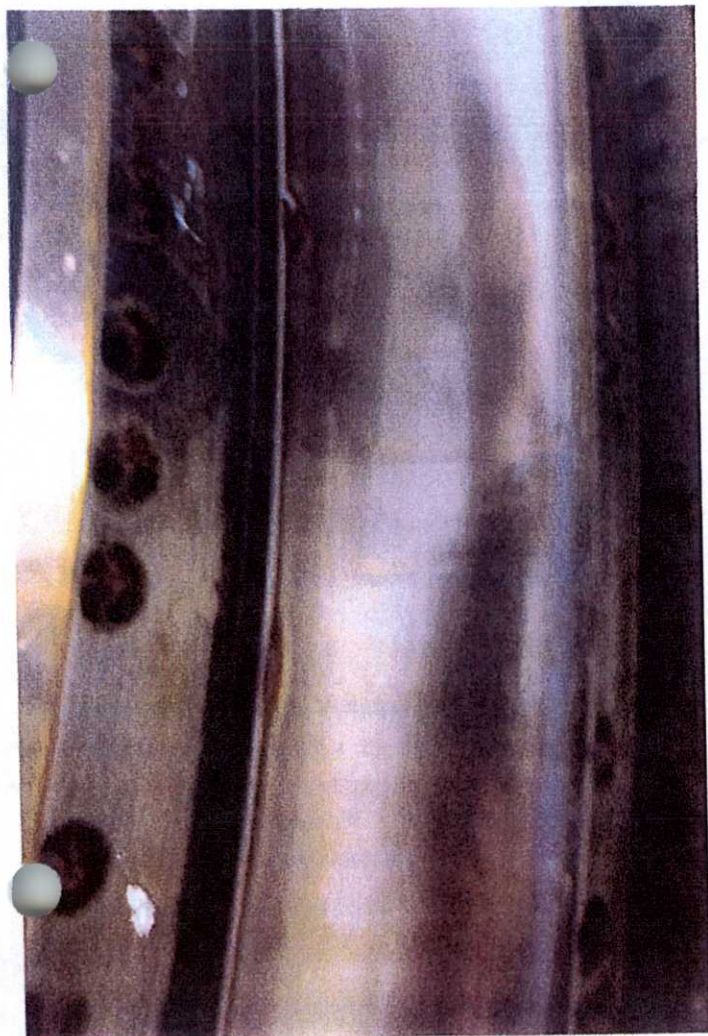
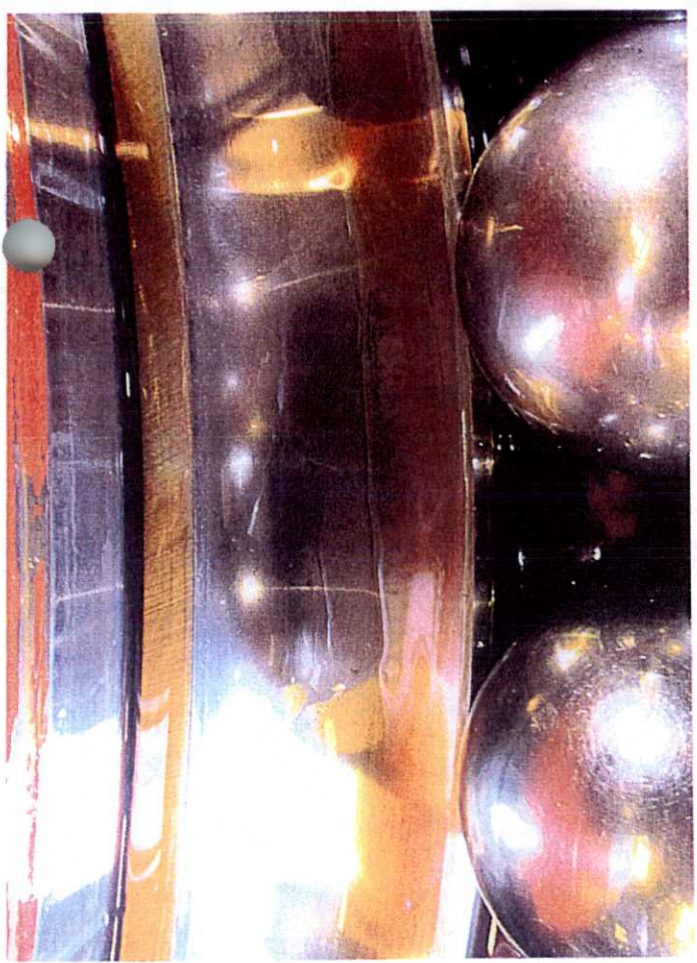


# *Photographs*

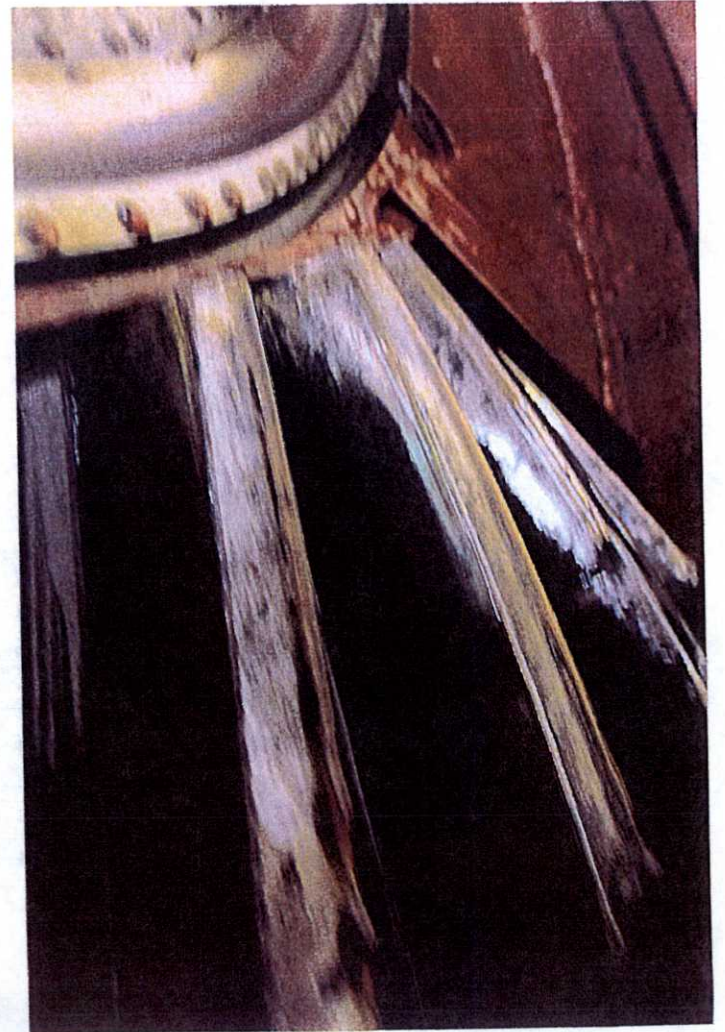
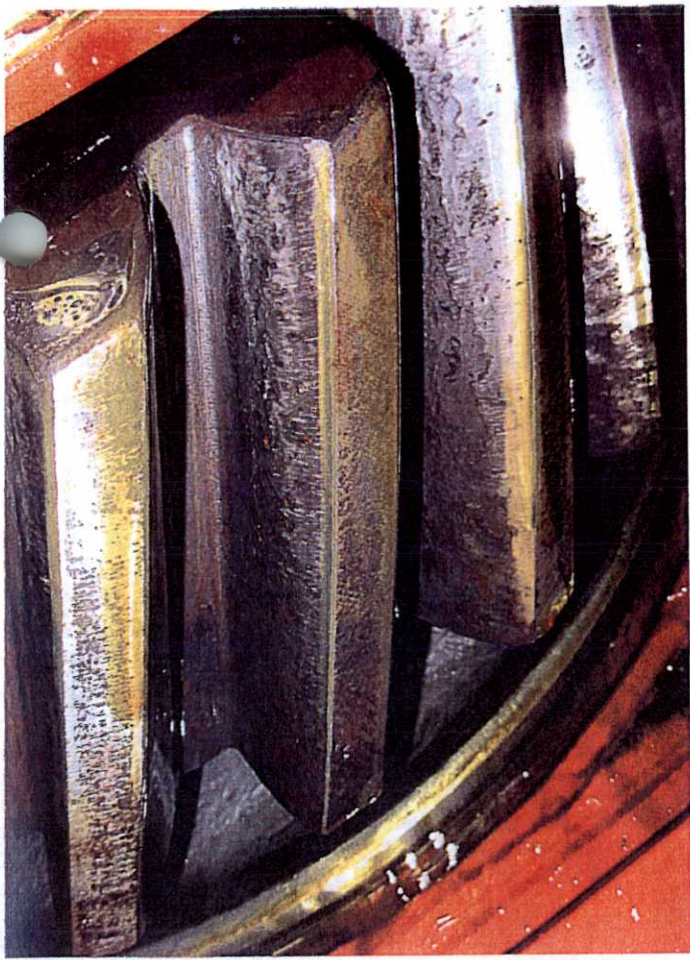




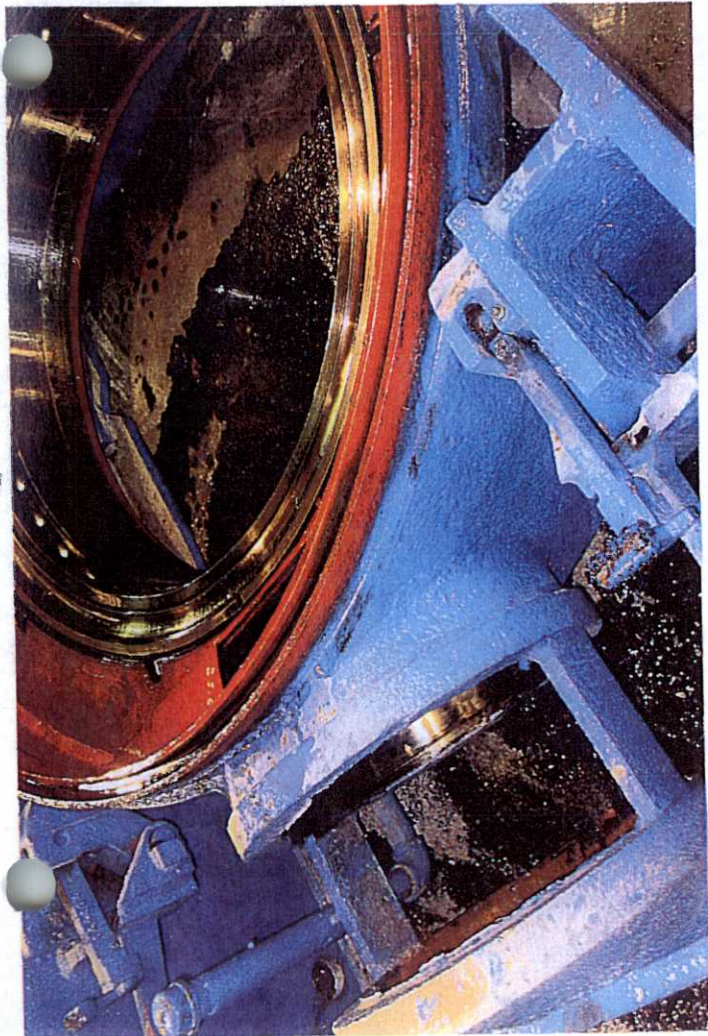
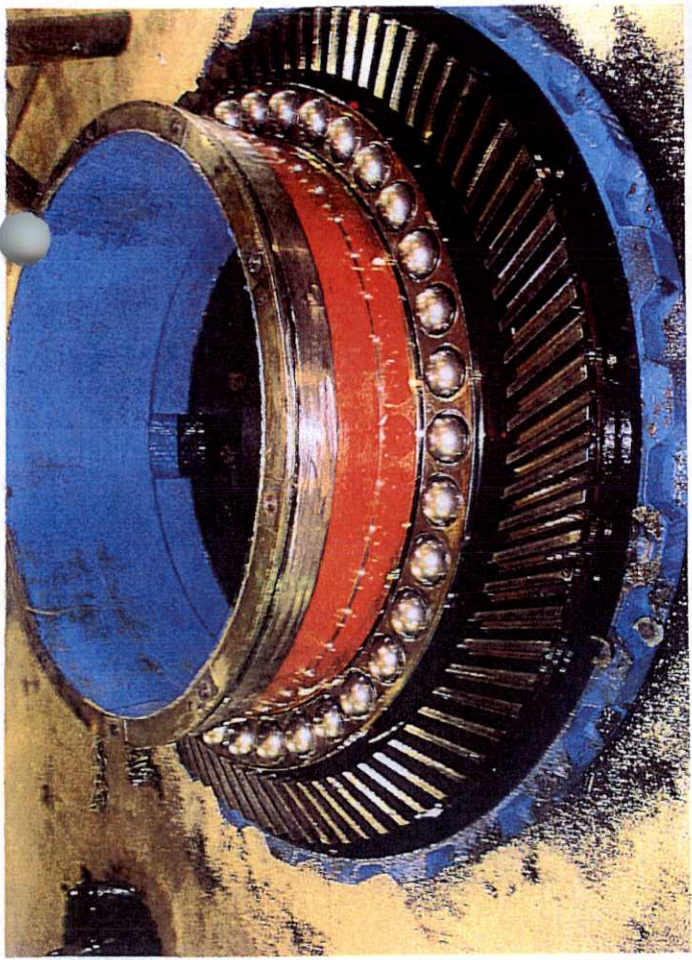




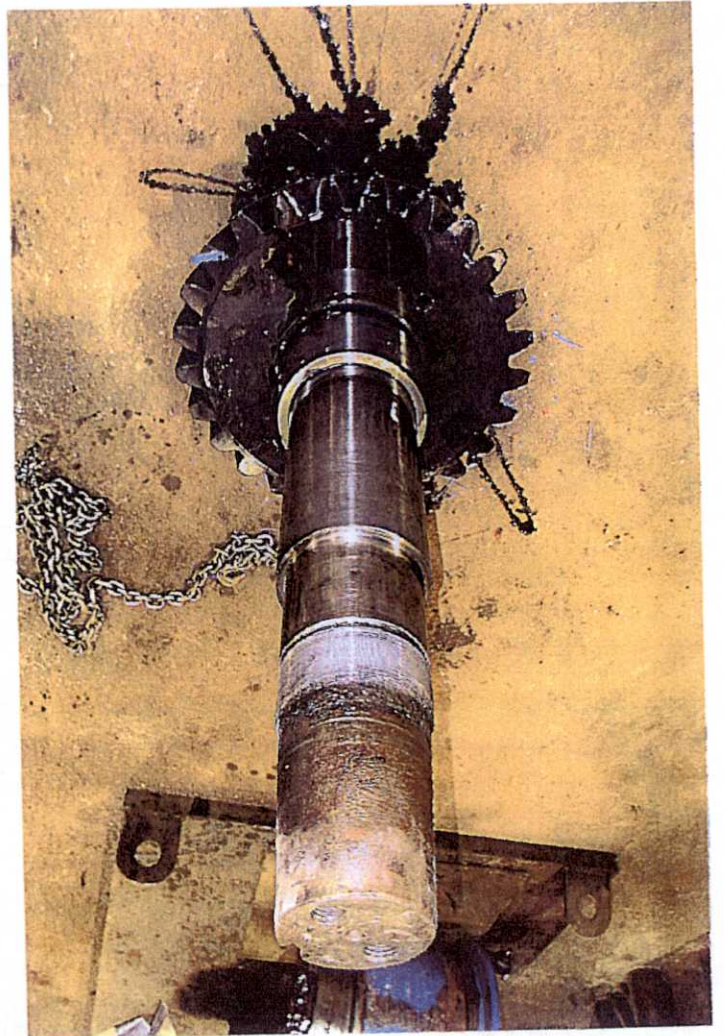
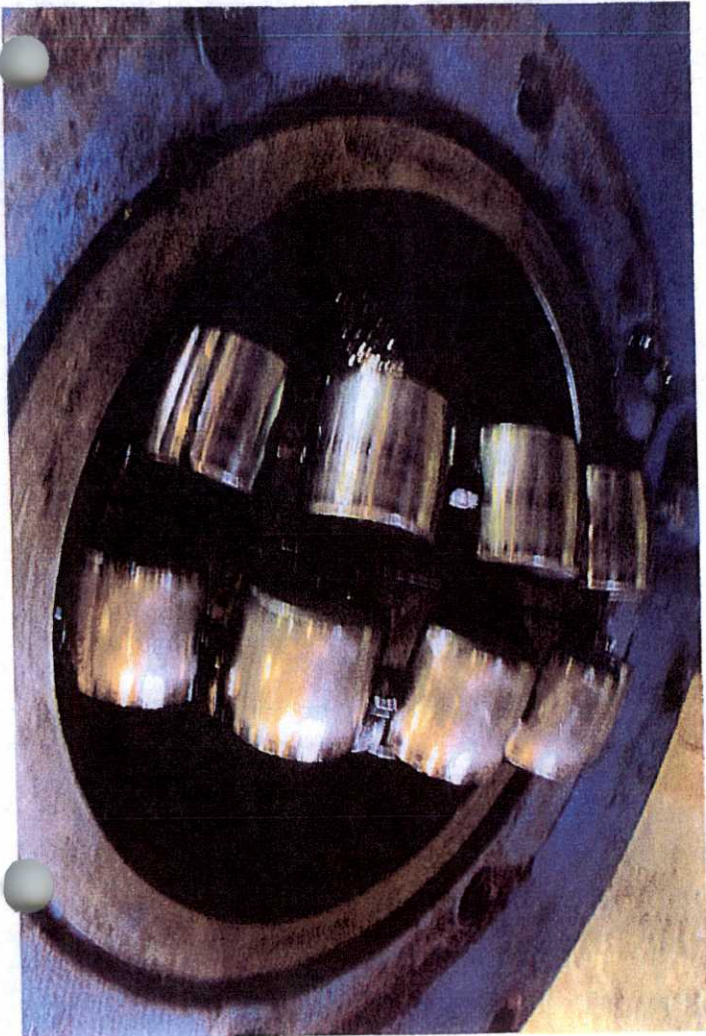
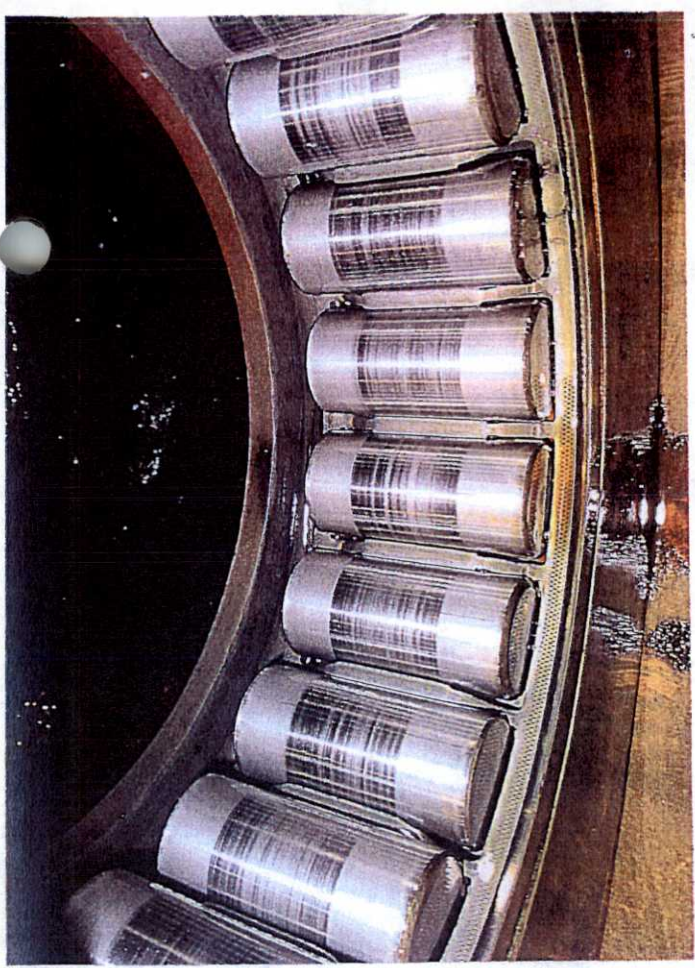




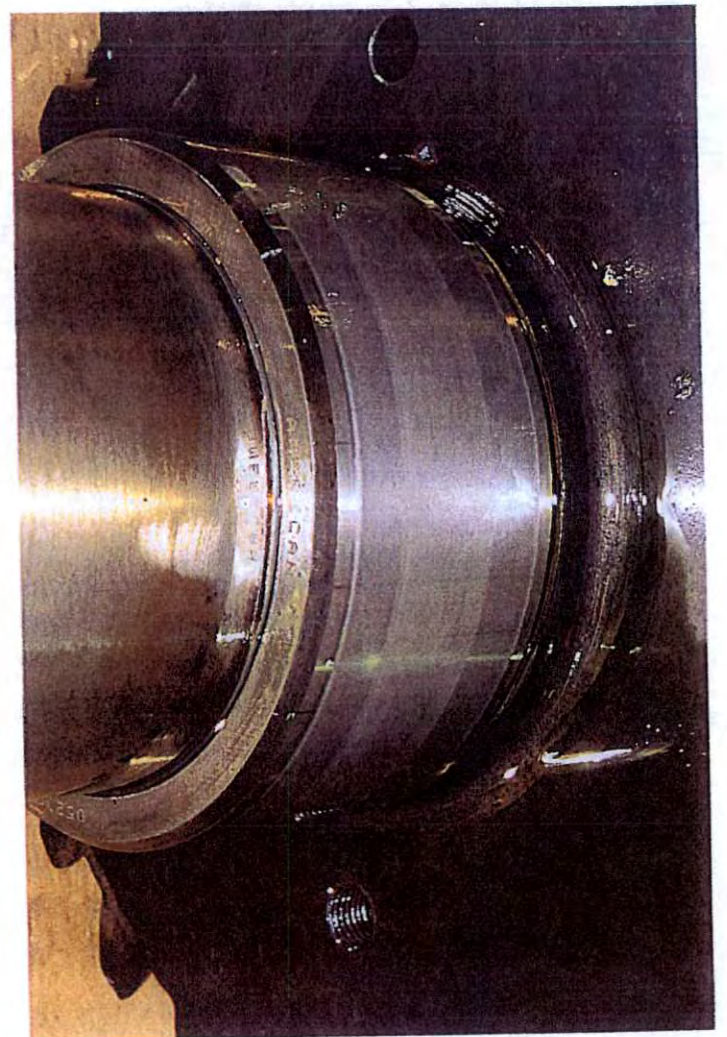
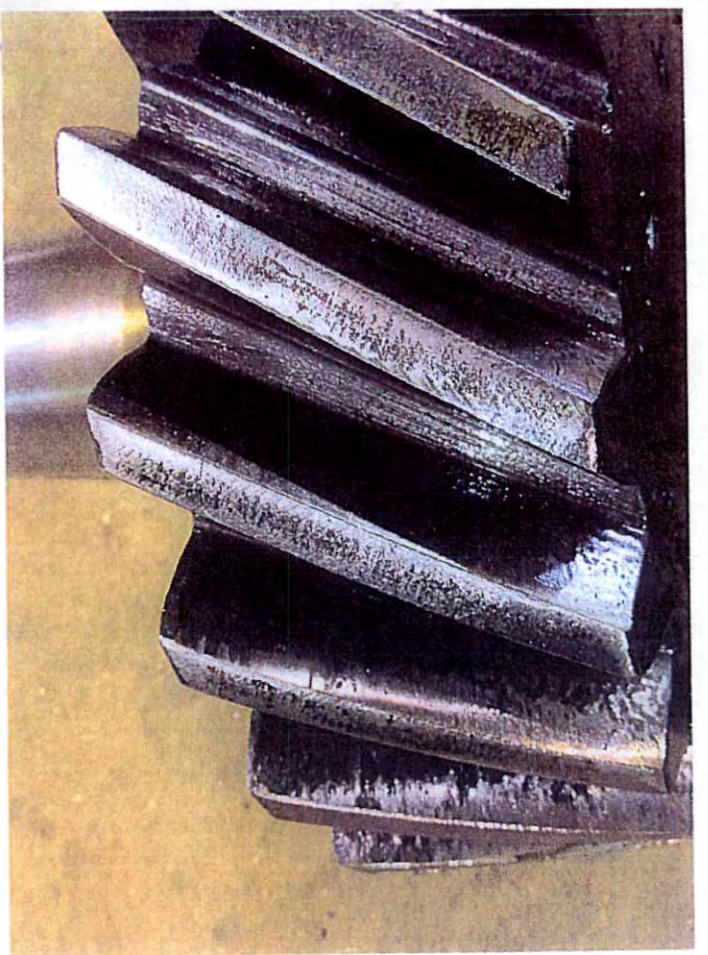




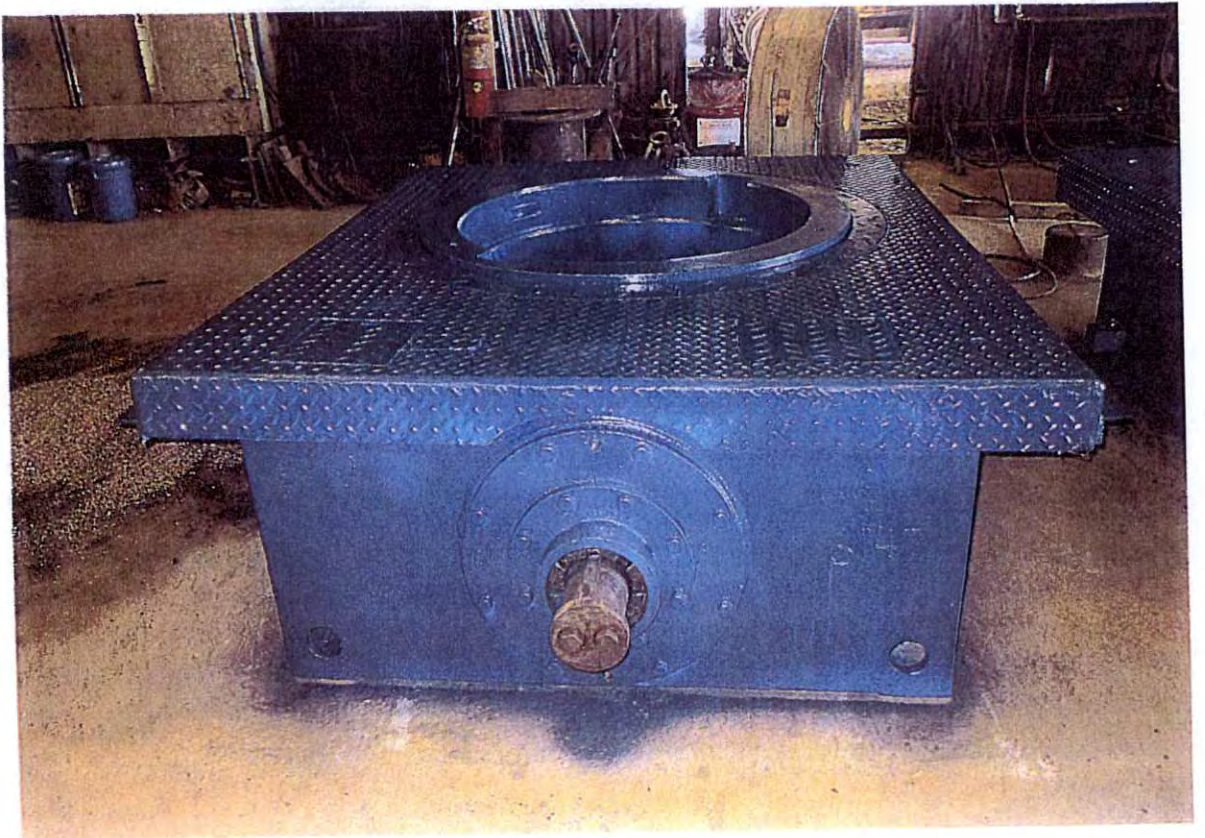
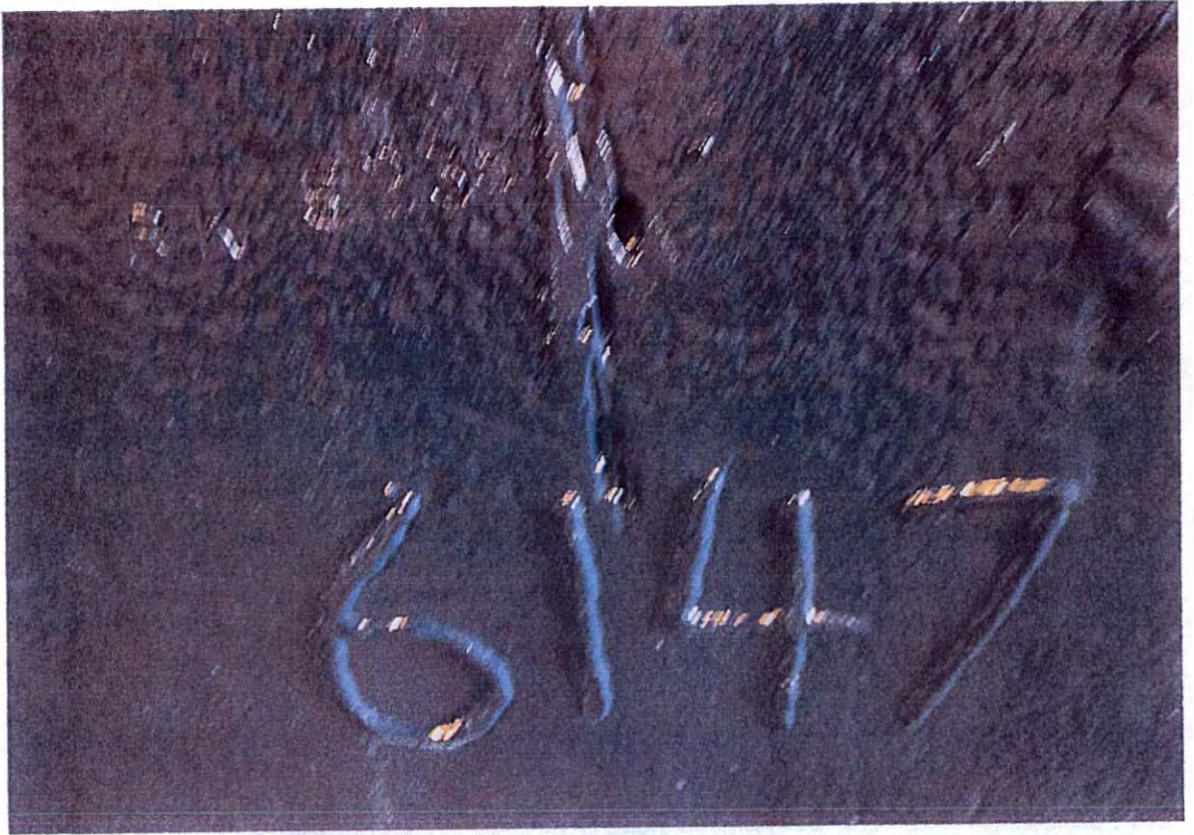












*A.P.I. Certificates*





November 18, 2015

Facility ID #: 2401  
Automatic Notification - Extension Letter

Ace Machine, Fabrication & Construction, LLC  
2706 W. Admiral Doyle Drive  
New Iberia, LA 70560  
United States

---

**Re:** Certifications 7-1-0214; 16A-0285; 8C-0243

For your facility located at:  
2706 W. Admiral Doyle Drive  
New Iberia, LA 70560  
United States

API has extended the expiration dates of your certification(s) to March 15, 2016. You can verify the status of your API certification(s) on the API Composite List by using the following URL:  
[http://compositelist.api.org/CompanyList.ASP?IDS=Facility\\_ID=2401](http://compositelist.api.org/CompanyList.ASP?IDS=Facility_ID=2401)

**If you have an APIQR ISO 9001 or ISO 14001 Certificate of Registration, this extension does not include those certificates since API's accreditation requirements do not allow the extension of registrations beyond their expiration date.**

If you have not yet submitted your renewal documentation, please do so as soon as possible. If you have submitted renewal documentation and your audit has not been scheduled and/or performed, an API auditor will contact you shortly.

If your audit has already been performed, this letter does not extend or otherwise change your due date for submitting corrective actions to any nonconformities. Furthermore, any decision on certification resulting from a review of your audit invalidates this extension, unless otherwise specified.

The extension of your certificates is contingent upon the payment of any outstanding balances. API may withdraw this extension at its discretion for any unpaid, overdue balances. Any outstanding balances must be paid in order to avoid suspension or cancellation of your certifications. API will not review the audit or responses of facilities with outstanding balances.

API strives to complete renewal /recertification prior to a certificate's expiration. However, just as the demand for oil and natural gas has increased over the last several years, so has the demand for monogrammed equipment and API certifications. While this demand has increased API's processing times, API is continuously investing to improve these processing times in the future.

Very truly yours,

API Certification Programs



# Certificate of Authority to use the Official API Monogram

License Number: 7-1-0214

ORIGINAL

The American Petroleum Institute hereby grants to

**ACE MACHINE, FABRICATION & CONSTRUCTION, LLC**  
2706 W. Admiral Doyle Drive  
New Iberia, Louisiana

the right to use the Official API Monogram® on manufactured products under the conditions in the official publications of the American Petroleum Institute entitled API Spec Q1® and **API Spec 7-1** and in accordance with the provisions of the License Agreement.

In all cases where the Official API Monogram is applied, the API Monogram should be used in conjunction with this certificate number: **7-1-0214**

The American Petroleum Institute reserves the right to revoke this authorization to use the Official API Monogram for any reason satisfactory to the Board of Directors of the American Petroleum Institute.

The scope of this license includes the following product: Drill Stem Subs

QMS Exclusions: No Exclusions Identified as Applicable

Effective Date: **AUGUST 15, 2012**

Expiration Date: **AUGUST 15, 2015**

To verify the authenticity of this license, go to [www.api.org/compositelist](http://www.api.org/compositelist).

American Petroleum Institute



Director of Global Industry Services



**American  
Petroleum  
Institute**



2013146



# Certificate of Authority to use the Official API Monogram

License Number: 8C-0243

ORIGINAL

The American Petroleum Institute hereby grants to

**ACE MACHINE, FABRICATION & CONSTRUCTION, LLC**  
2706 W. Admiral Doyle Drive  
New Iberia, Louisiana

the right to use the Official API Monogram® on manufactured products under the conditions in the official publications of the American Petroleum Institute entitled API Spec Q1® and **API Spec 8C** and in accordance with the provisions of the License Agreement.

In all cases where the Official API Monogram is applied, the API Monogram should be used in conjunction with this certificate number: **8C-0243**

The American Petroleum Institute reserves the right to revoke this authorization to use the Official API Monogram for any reason satisfactory to the Board of Directors of the American Petroleum Institute.

The scope of this license includes the following product: Rotary Swivel Ball Adapters at PSL 1

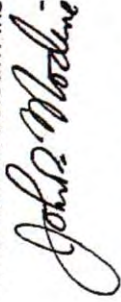
QMS Exclusions: No Exclusion Record

Effective Date: **DECEMBER 10, 2013**

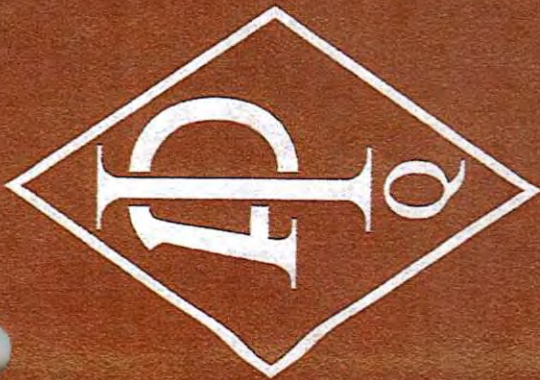
Expiration Date: **AUGUST 15, 2015**

To verify the authenticity of this license, go to [www.api.org/compositelist](http://www.api.org/compositelist).

American Petroleum Institute



Director of Global Industry Services



®

**American  
Petroleum  
Institute**



2013-146



# Certificate of Authority to use the Official API Monogram

License Number: 16A-0285

ORIGINAL

The American Petroleum Institute hereby grants to

**ACE MACHINE, FABRICATION & CONSTRUCTION, LLC**  
2706 W. Admiral Doyle Drive  
New Iberia, Louisiana

the right to use the Official API Monogram® on manufactured products under the conditions in the official publications of the American Petroleum Institute entitled API Spec Q1® and **API Spec 16A** and in accordance with the provisions of the License Agreement.

In all cases where the Official API Monogram is applied, the API Monogram should be used in conjunction with this certificate number: **16A-0285**

The American Petroleum Institute reserves the right to revoke this authorization to use the Official API Monogram for any reason satisfactory to the Board of Directors of the American Petroleum Institute.

The scope of this license includes the following: Adapters

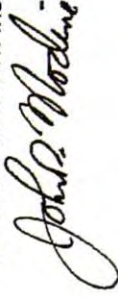
QMS Exclusions: No Exclusions Identified as Applicable

Effective Date: **AUGUST 15, 2012**

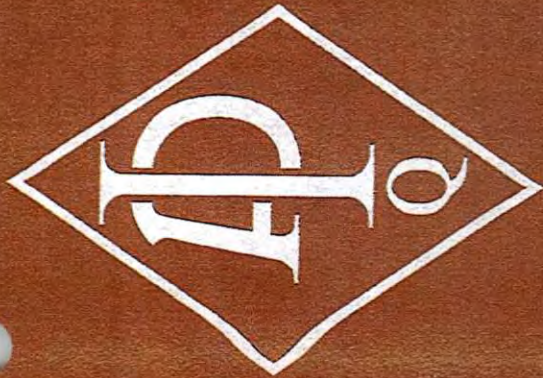
Expiration Date: **AUGUST 15, 2015**

To verify the authenticity of this license, go to [www.api.org/composite](http://www.api.org/composite)list.

American Petroleum Institute



Director of Global Industry Services



**American  
Petroleum  
Institute**



2013-146

*Certificates of Liability Insurance*







### ADDITIONAL REMARKS SCHEDULE

AGENCY Arthur J. Gallagher Risk Management Services, Inc.		NAMED INSURED Ace Machine, Fabrication and Construction, LLC 2706 W. Admiral Doyle Dr. New Iberia, LA 70560	
POLICY NUMBER		EFFECTIVE DATE:	
CARRIER	NAIC CODE		

**ADDITIONAL REMARKS**

**THIS ADDITIONAL REMARKS FORM IS A SCHEDULE TO ACORD FORM,  
FORM NUMBER: 25 FORM TITLE: CERTIFICATE OF LIABILITY INSURANCE**

CG24040509; AUTO LIABILITY, ENDT# 8610; EXCESS LIABILITY, AS PER ENDT# EGXS6110610 AND WORKERS COMPENSATION, AS PER ENDT# WC000313, AND TEXAS WORKERS COMPENSATION, AS PER ENDT# WC420304A, PURSUANT TO AND SUBJECT TO THE POLICY TERMS, DEFINITIONS, CONDITIONS AND EXCLUSIONS.

CERTIFICATE HOLDER IS INCLUDED AS ADDITIONAL INSURED ON THE GENERAL LIABILITY POLICY, ENDT# CG20371001; AUTOMOBILE LIABILITY, ENDT# AICA00010301; EXCESS LIABILITY. CONTRACTOR POLLUTION LIABILITY \$1,000,000 LIMIT WITH \$5,000 PER OCCURRENCE DEDUCTIBLE. WAIVER OF SUBROGATION APPLIES TO CERTIFICATE HOLDER, AS RESPECTS TO GENERAL LIABILITY, AUTOMOBILE LIABILITY, EXCESS LIABILITY AND WORKERS COMPENSATION, PURSUANT TO AND SUBJECT TO THE POLICY TERMS, DEFINITIONS, CONDITIONS AND EXCLUSIONS.