

El Dorado  
Drilling Rig 1

0040





[www.PetroRigs.com](http://www.PetroRigs.com)





[www.PetroRigs.com](http://www.PetroRigs.com)





[www.PetroRigs.com](http://www.PetroRigs.com)



A large, white metal structure, likely a component of an oil rig, is shown in a gravel lot. The structure features a prominent blue panel on its side and a complex white metal frame. In the background, another similar structure is visible, along with utility poles and a clear blue sky. The ground is covered in gravel with sparse green vegetation.

[www.PetroRigs.com](http://www.PetroRigs.com)





[www.PetroRigs.com](http://www.PetroRigs.com)





[www.PetroRigs.com](http://www.PetroRigs.com)





[www.PetroRigs.com](http://www.PetroRigs.com)









STOP  
ARE YOU  
HELD OFF?

















[www.PetroRigs.com](http://www.PetroRigs.com)





[www.PetroRigs.com](http://www.PetroRigs.com)









[www.PetroRigs.com](http://www.PetroRigs.com)

















MLAP-17

Emergency Shut Down

Emergency Use Only

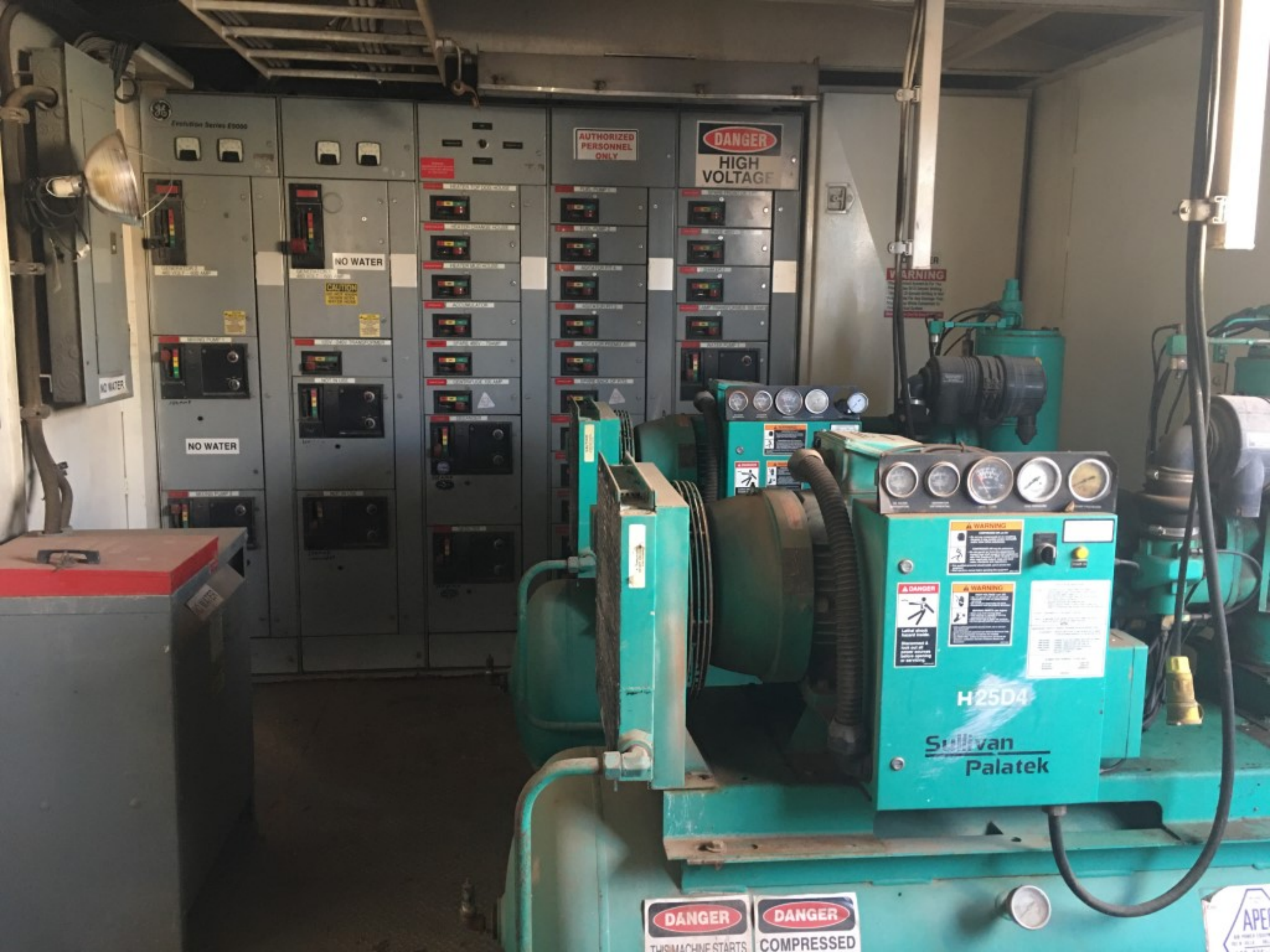
Emergency Shut Down

Emergency Use Only









GE Evolution Series E3000

AUTHORIZED PERSONNEL ONLY

**DANGER**  
HIGH VOLTAGE

NO WATER

CAUTION

NO WATER

NO WATER

WARNING

WARNING

**DANGER**  
Letting wheel rotate freely. Disconnect & lock out all power sources before starting or re-wiring.

WARNING

H25D4

Sullivan  
Palatek

**DANGER**

THIS MACHINE STARTS

**DANGER**

COMPRESSED

APES





CAUTION  
HIGH VOLTAGE  
REAR PROTECTION  
REMOVED

**DANGER**  
HIGH  
VOLTAGE  
NO WATER



The image shows an outdoor storage yard for oilfield equipment. In the foreground, there are two large, red-painted metal manifolds with multiple valves and handwheels. Behind them is a blue metal frame structure, possibly a wellhead or part of a pumpjack. To the right, there is a yellow metal structure with a large spool of black pipe. The ground is covered in gravel and sparse green weeds. The sky is clear and blue.

[www.PetroRigs.com](http://www.PetroRigs.com)





[www.PetroRigs.com](http://www.PetroRigs.com)





[www.PetroRigs.com](http://www.PetroRigs.com)



A photograph of a red industrial valve assembly, likely a wellhead or manifold, situated on a gravel lot. The assembly consists of a central vertical pipe with several horizontal pipes branching off. It features multiple hand-operated valves with large red wheels. The entire unit is mounted on a red metal frame. In the background, there are blue and yellow industrial structures, possibly part of a rig or wellhead, and a grassy field under a clear sky. A watermark is overlaid on the center of the image.

[www.PetroRigs.com](http://www.PetroRigs.com)



The image shows an outdoor industrial equipment yard. In the foreground, there is a blue metal platform with a yellow scissor lift mounted on it. To the left, there are several white metal structures, possibly part of a rig or wellhead. The ground is covered in gravel. In the background, there are utility poles and a clear blue sky. A large white building is visible on the far left. The text 'www.PetroRigs.com' is overlaid in the center of the image.

[www.PetroRigs.com](http://www.PetroRigs.com)





[www.PetroRigs.com](http://www.PetroRigs.com)





[www.PetroRigs.com](http://www.PetroRigs.com)



[www.PetroRigs.com](http://www.PetroRigs.com)







[www.PetroRigs.com](http://www.PetroRigs.com)





[www.PetroRigs.com](http://www.PetroRigs.com)





[www.PetroRigs.com](http://www.PetroRigs.com)





[www.PetroRigs.com](http://www.PetroRigs.com)





[www.PetroRigs.com](http://www.PetroRigs.com)



[www.PetroRigs.com](http://www.PetroRigs.com)





[www.PetroRigs.com](http://www.PetroRigs.com)







[www.PetroRigs.com](http://www.PetroRigs.com)





[www.PetroRigs.com](http://www.PetroRigs.com)



[www.PetroRigs.com](http://www.PetroRigs.com)





[www.PetroRigs.com](http://www.PetroRigs.com)







[www.PetroRigs.com](http://www.PetroRigs.com)





[www.PetroRigs.com](http://www.PetroRigs.com)





[www.PetroRigs.com](http://www.PetroRigs.com)





[www.PetroRigs.com](http://www.PetroRigs.com)









219

ONLY

































USED  
CHAIN  
HYD  
90  
WT  
MOTOR





**DANGER**  
HIGH VOLTAGE  
WARNING

1 20

**NOTICE**





DANGER  
CONFINED SPACE  
DO NOT ENTER

HOLE

CAUTION





**CAUTION**  
HIGH VOLTAGE  
DANGER  
DO NOT TOUCH  
UNLESS QUALIFIED  
PERSONNEL

NOLOAD

NOLOAD

EXIT









CATERPILLAR

1000000000

SAFETY WARNING  
WARNING  
DANGER

1000000000

















20

1955

0 1 0

U  
S  
E  
D

C  
H  
A  
I  
N

H  
Y  
D

9  
0  
W  
T

M  
O  
T  
O  
R

NOTRA





M  
O  
T  
O  
R













QUAD EL DORA  
DRILLING COMPANY, LLC

**STOP**

THANK YOU FOR  
ANOTHER SAFE DAY.  
PLEASE DRIVE SAFELY  
AND RESPECT THE COMMUNITY



**ADVANCED PRESSURE INC.**  
**405-324-5600**

TANK VOLUME

BOTTLE VOLUME

**WORKING PRESSURE 3000 PSI**  
**PRECHARGE PRESSURE 1000 PSI**

DATE  MODEL  SER

48028021

ALL COMPONENTS CONFORM TO API 16D

**10300 W. RENO**  
**OKC, OK 73127**

CHECK WEEKLY SET  
FOR 6 DROPS PER MIN  
USE SAE 10 OIL  
DO NOT USE  
MARVEL MYSTERY OIL

CLEAN STRAINER  
EVERY 30 DAYS

**Master Air**



CAUTION  
EAR PROTECTION  
REQUIRED  
IN THIS AREA

hatsy

Do not Turn  
Heater off!!  
Stays  
on  
24-7 Never  
Turn  
Heater  
off