















STEEL TRUCK &
HAND TRUCK
REQUIRED
NO PARKING

3







































































P-1279

HEIGHT

142

API NO. 4F 8070 2ND EDITION

12-07

FT.

MANUFACTURER SERIAL NO.

M174-2

MAX. STATIC HOOK LOAD
TRAVELING BLOCK

768000

LBS. WITH

12

LINES TO

CAUTION:

ACCELERATION OR IMPACT, ALSO SETBACK AND

SHOCKS WILL REDUCE THE MAXIMUM RATED STATIC HOOK LOAD

CAPACITY. THE DEAD LINE ANCHOR SHOULD NOT BE SHIFTED

FROM ITS ESTABLISHED POSITION WITHOUT CONSULTING THE

MANUFACTURE. ALL BOLTS AND PINS SHOULD BE PROPERLY

INSTALLED PRIOR TO USE

MAX. WIND RESISTANCE

72

KNOTS WITH MAX. RIDE





















DANGER
FALL PROTECTION
REQUIRED BEYOND
THIS POINT

MAX CAPACITY
MAN RIDER - WL: 300 LBS
OBJECT LIFT - SWL: 3,000 LBS

















NATIONAL OIL WELL VARCO

SUGAR LAND, TEXAS U.S.A.

EL MAGCO

EDDY CURRENT BRAKE

WATER COOLED

SERIAL
NO.

K12066W

BAILOP
MODEL NO.

07201

ASST.
NO.

10003773-001

MAX. INPUT DC
CURRENT (A) 30° C

10

EST.
WT.

12.130 LBS.

MAX. INPUT D.C.
VOLTAGE

250 VDC

MAX.
RPM

600

MIN. COOLANT
FLOW RATE

75 GPM

MAX. COOLANT INLET
TEMPERATURE

100 °F

MAX. COOLANT DISCHARGE
TEMPERATURE

165 °F

MAX. AMBIENT TEMPERATURE 100° F



Approved

EXPLOSION PROOF FOR CLASS I, DIVISION 1, GROUPS
C AND D HAZARDOUS LOCATIONS, WITH A TEMPERATURE
RATING OF "T4A", WHEN USED WITH A LOSS-OF-COOLING
WATER FLOW ALARM SYSTEM PER DWG. 46786 AND SENSING
DEVICE LOCATED WITHIN 18" OF THE JUNCTION BOX ON THE
CONDUIT CONTAINING THE INCOMING POWER LEADS.



WARNING

FAILURE TO READ AND COMPLY WITH THE INSTRUCTIONS PROVIDED IN THE
INSTALLATION, OPERATION AND MAINTENANCE MANUAL FOR THIS EDDY
CURRENT BRAKE COULD RESULT IN SERIOUS PROPERTY DAMAGE, SEVERE



















HEALTH
REACTIVITY
SAFETY
SECTION









AGENCY
SH
1



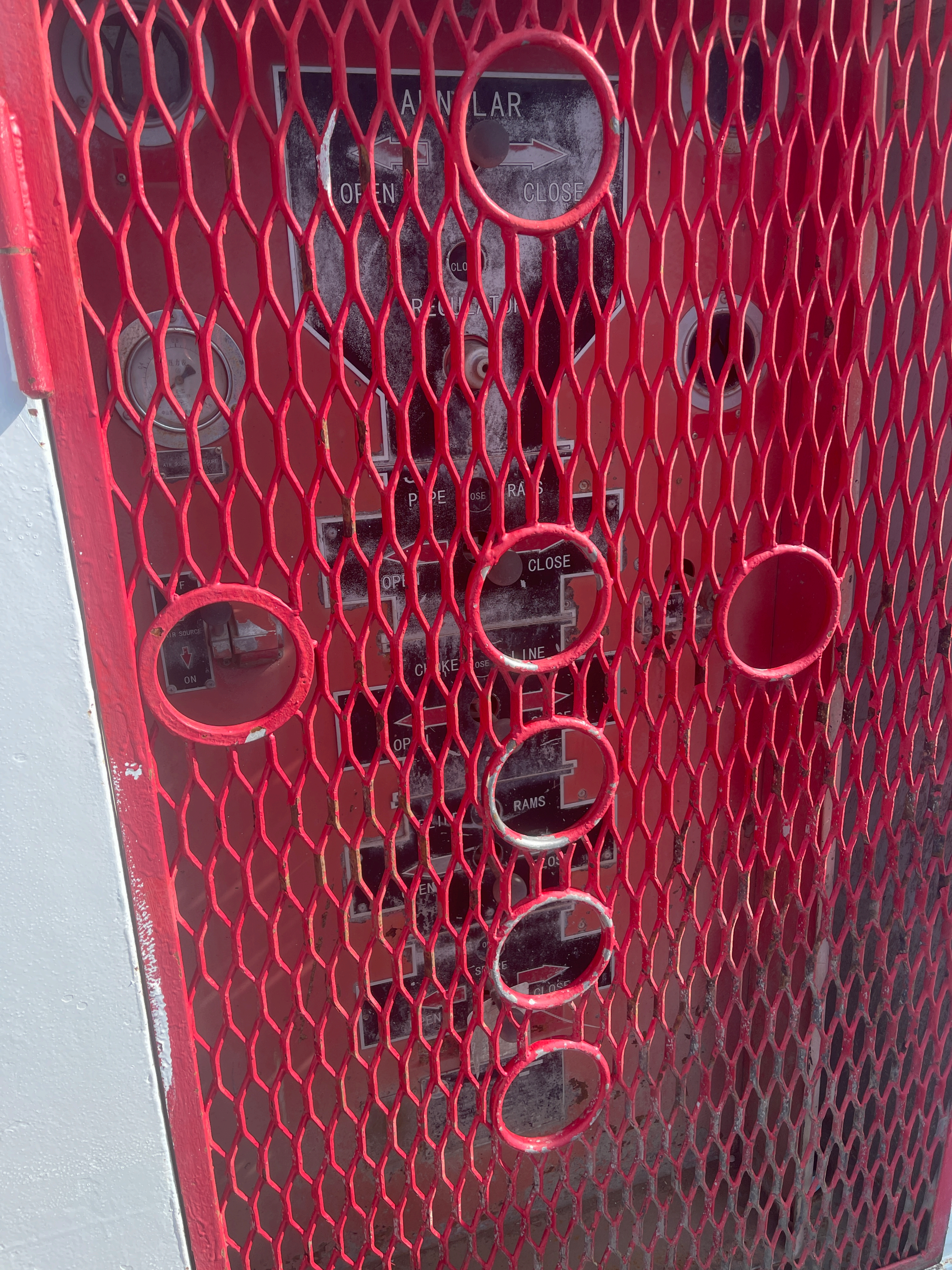












AIR LINE

OPEN

CLOSE

REGULATOR

PIPE

CLOSE

RAMS

CLOSE

CHUCK

CLOSE

LINE

RAMS

CLOSE

OPEN

OPEN

CLOSE



CYCLONE
DRILLING INC
RIG 17





NOTICE
SAFETY
HIGH VOLTAGE
NO SMOKING









CAPACIT
1 TON



1600

CYCLONE
Ser. No. MP047

ZYF-1600 钻井泵
ZYF-1600 MWD PUMP
Spec 7
Serial
Cert. No. 7

CYCLONE

Ser. No. MP047



ZYF-1600 钻井泵
ZYF-1600 MUD PUMP



Spec 7K
Second Edition
Cert. No. 7K-0071

三缸单作用泥浆泵

阀尺寸:

Valve Port

吸入管直径:

Diameter of Suction Inlet

吸入管口径:

Diameter of Discharge Outlet

管口尺寸:

管口尺寸:

管口尺寸:

管口尺寸:

API 7A

API 7A

305mm

12in

130mm

5 1/8in

4426mm 2413mm 2004mm

174in 95in 78.9in

174in 95in 78.9in

174in 95in 78.9in

174in 95in 78.9in

174in 95in 78.9in

174in 95in 78.9in

174in 95in 78.9in

174in 95in 78.9in

174in 95in 78.9in

174in 95in 78.9in

174in 95in 78.9in

174in 95in 78.9in

174in 95in 78.9in

174in 95in 78.9in

174in 95in 78.9in

174in 95in 78.9in

174in 95in 78.9in

174in 95in 78.9in

174in 95in 78.9in

174in 95in 78.9in















DANGER
THIS EQUIPMENT
STARTS AND STOPS
AUTOMATICALLY

**HIGH
VOLTAGE**

DANGER
**HIGH
VOLTAGE**











Omron[®]

**OILFIELD & MARINE
DIVISION**

HOUSTON, TEXAS USA

SERIAL # - 141379

DANGER

HIGH











RIDGID
Store & Go

20 AMP
20 AMP
20 AMP

DANGER
HIGH VOLTAGE







DANGER
HIGH
VOLTAGE

DANGER
FOREIGN VOLTAGE
DISCONNECT ELSEWHERE
BEFORE ENTRY

GEN 3



ENGINE
CONTROL



GEN
RUN



OMRON
OILFIELD & MARINE
DIVISION
NORTH RICHMOND, VA

GEN
ON LINE



PUSH
TO CLOSE



SPEED
ADJUST



VOLTS
ADJUST



DANGER

HIGH VOLTAGE



DANGER
Hazard of Electrical Shock or
Burn and Mechanical Motion

GEN 2



ENGINE
CONTROL



GEN
RUN



GEN
ON LINE



PUSH
TO CLOSE



OMRON
OILFIELD & MARINE
DIVISION
HOUSTON, TEXAS USA

SPEED
ADJUST



VOLTS
ADJUST



DANGER
HIGH VOLTAGE



GEN 1



ENGINE
CONTROL



GEN
RUN



GEN
ON LINE



PUSH
TO CLOSE



OMRON
OILFIELD & MARINE
DIVISION
HOUSTON, TEXAS USA

SPEED
ADJUST



VOLTS
ADJUST



E



Up off
200V



DANGER
HIGH VOLTAGE
TURN OFF POWER
BEFORE SERVICING



DANGER
HIGH VOLTAGE
TURN OFF POWER
BEFORE SERVICING

DANGER
HIGH
VOLTAGE



DANGER
HIGH
VOLTAGE

DANGER
HIGH
VOLTAGE



Allen-Bradley

CENTERLINE



Motor Man
Driller, Pusher
ONLY!

BAYLOR

DANGER-HIGH VOLTAGE
INSULATED COMPONENTS CARRYING
HIGH POTENTIAL AC AND DC CURRENTS
INSIDE CABINET

PWM-CL



DANGER
HIGH VOLTAGE 

20 AMP













MAGNAMAX DWR

SYNCHRONOUS AC GENERATOR

MODEL	744FSS5095	LRJ015
SERIAL	WA-583071-1213	
FRAME	744	RPM 1800
PH	3	HZ 60 TYPE FSS
ENCL.	IP22	PF 0.7 AMB. 40 °C
INS.CLASS	H	RISE BY RES. 80 °C
FIELD AMPS	2.2	FIELD VOLTS 55
CONTINUOUS		
KW	915	VOLTS 600
KVA	1307	AMPS 1258
STANDBY SERVICE		
KW		VOLTS
KVA		AMPS
DRIVE BEARING NA		EXCITER BEARING A-7812R-110
REGULATOR NO.		PMG VOLTS 180 PMG 300

GREASING INSTRUCTIONS

LUBRICATE GENERATOR EVERY 3000 OPERATING HOURS OR ANNUALLY WITH 4.2 CUBIC INCHES OF EXXON POLYREX EM OR EQUIVALENT GREASE WITH A TEMPERATURE RANGE OF -30 °C TO 175 °C

MARATHON®
ELECTRIC
WAUSAU, WISCONSIN 54401

SPACE-HEAT



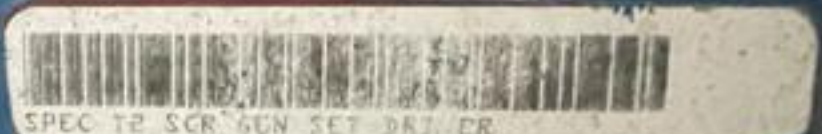
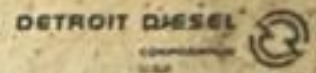
IMPORTANT ENGINE INFORMATION

DOE THIS ENGINE CONFORMS TO 2006 U.S. EPA AND CALIFORNIA
NEW REGULATIONS FOR LARGE NONROAD COMPRESSION IGNITION ENGINES.
R090 THIS ENGINE IS CERTIFIED TO OPERATE ON DIESEL FUEL.
EMISSION CONTROL SYSTEMS:

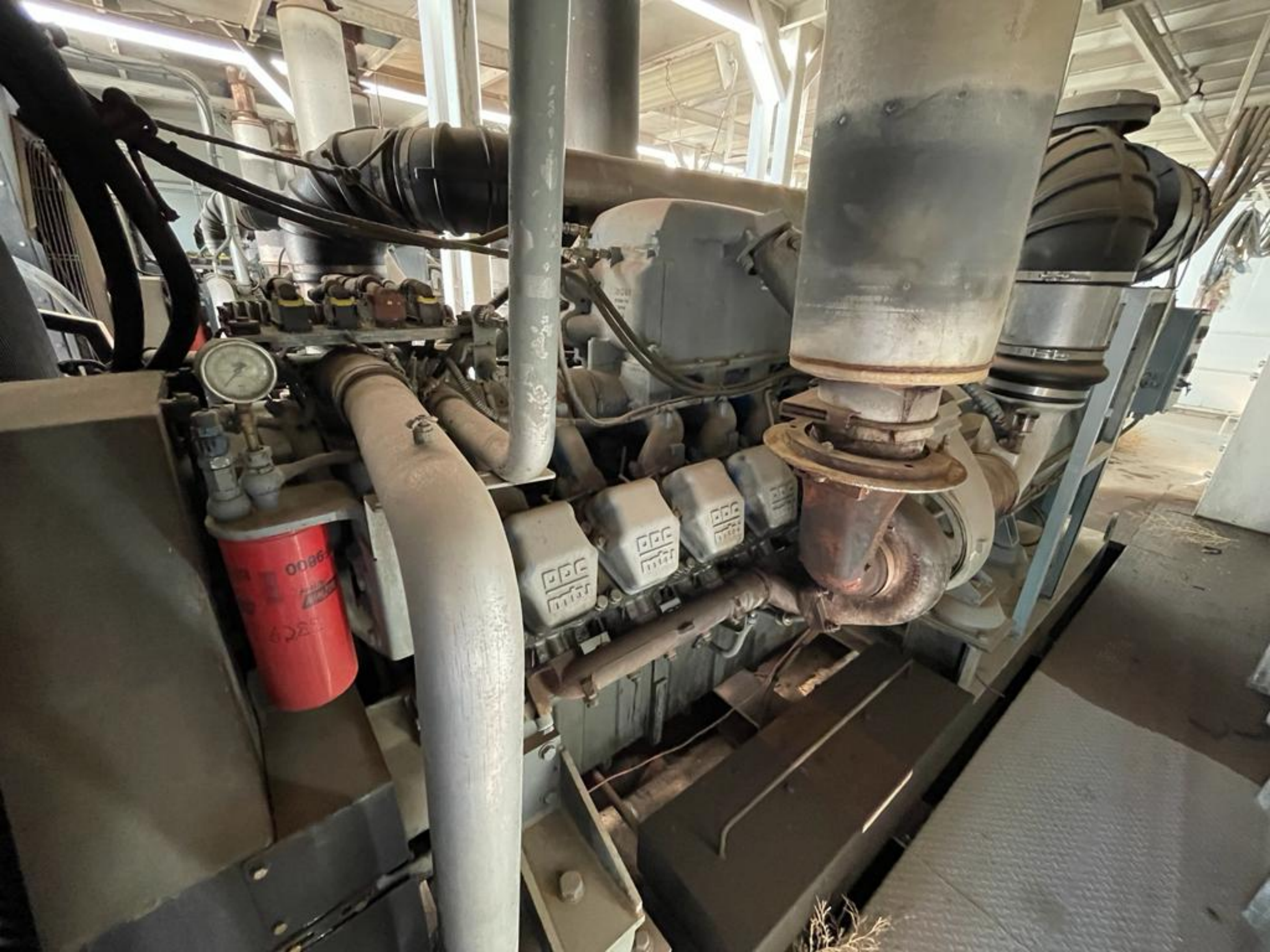
FUEL RATE AT HOV, KW 333.8 HP/STROKE	HOV, KW 1115 (1495 HP) AT 1800 RPM
INJECTION TIMING 14 DEG. BTC	DISPLACEMENT 31.0L
ENGINE FAMILY 600K31.00R	RIN, IDLE 700 RPM
MODEL SERIES 2000 TIER 2	MPS, DATE JUN 2006

THIS ENGINE IS CERTIFIED FOR CONSTANT SPEED OPERATION. LIMIT 5362003662

L16192













EMISSION CONTROL INFORMATION

THIS ENGINE MEETS U.S. EPA EMISSION STANDARDS UNDER 40 CFR 1039.625 AND COMPLIES WITH CALIFORNIA EMISSION REQUIREMENTS UNDER 13 CSR 242201. SELLING OR INSTALLING THIS ENGINE FOR ANY PURPOSE OTHER THAN FOR THE EQUIPMENT FLEXIBILITY PROVISIONS OF 40 CFR 1039.625 AND 13 CSR 242201 MAY BE A VIOLATION OF FEDERAL AND/OR STATE LAW SUBJECT TO CIVIL PENALTIES.

ENGINE FAMILY: ANDY 35.00kW
POWER CATEGORY: 150 kW
PLEASE CONTACT MTU AMERICA INC. AT (800) 760-8000
OR BY MAIL AT 20525 HACKENSACK DRIVE, NOKAL, GEORGIA
30132 FOR FURTHER INFORMATION ABOUT THIS ENGINE.
UNIT: 350000002

WFO DATE: 04/04/14 - OPERATING FUEL: DIESEL
DISP.: 31.8

mtu

40 23 0004 K20

CALIFORNIA PROPOSITION 65 WARNING

THIS ENGINE EXHAUST GAS AND SOME OF ITS CONSTITUENTS ARE KNOWN TO THE STATE OF CALIFORNIA TO CAUSE CANCER, BIRTH DEFECTS, AND OTHER REPRODUCTIVE HARM.

mtu

MTU America Inc.

BEHR

A356-T6

6709

WAF

17111

H1756

MAHLE

Made in USA

Part No. Location No.
Part No. Part No. Serial No.
Customer No.
Part No. Code
Part No. Code

B710

3171
33



MAGNAMAX DVB

SYNCHRONOUS AC GENERATOR

MODEL 724FSS5095
SERIAL WA-6000025-0212
FRAME 744 RPM 1800
PH 2 HZ 60 TYPE FSS
ENCL IP22 PF 0.7 AMB 40 °C
INS CLASS H RISE 5 RES 80 °C
FIELD AMPS 2.2 FIELD VOLTS 55

CONTINUOUS

KW 915 VOLTS 600
KVA 1307 AMPS 1258

STANDBY SERVICE

KW VOLTS
KVA AMPS

BEARING NA BEARING NA 7812R-110
REGULATOR NO. 180 1500

GREASING INSTRUCTIONS

LUBRICATE GENERATOR EVERY 3000 OPERATING HOURS OR ANNUALLY WITH 3.2 CUBIC INCHES OF EXXON POLYREX EM OR EQUIVALENT GREASE WITH A TEMPERATURE RANGE OF -30 °C TO 175 °C

MAGNAMAX
MILWAUKEE ELECTRIC TOOL CO.

WALISAU, WISCONSIN 54981

SPACE HEATER





EMISSION CONTROL INFORMATION

THIS ENGINE MEETS U.S. EPA EMISSION STANDARDS UNDER 40 CFR 101.621 AND COMPLIES WITH CALIFORNIA EMISSION REQUIREMENTS UNDER 13 CCR 2423.6. SELLING OR INSTALLING THIS ENGINE FOR ANY PURPOSE OTHER THAN FOR THE EQUIPMENT'S LEGALITY PROVISIONS OF 40 CFR 101.621 AND 13 CCR 2423.6 MAY BE A VIOLATION OF FEDERAL AND/OR STATE LAW SUBJECT TO CIVIL PENALTY.

ENGINE FAMILY: AMOS 6.800
POWER CATEGORY: 750 kW
PLEASE CONTACT MTU AMERICA INC. AT (386) 340-8800
OR BY MAIL AT 1805 MACKINAC DRIVE, NILES, MICHIGAN
44891 FOR FURTHER INFORMATION ABOUT THIS ENGINE.
UNIT: 12012000
MTU America Inc.

WFO DATE 04/00/14

CRF: 31.8

OPERATING FUEL: DIESEL

mtu

95 35 MACH 475

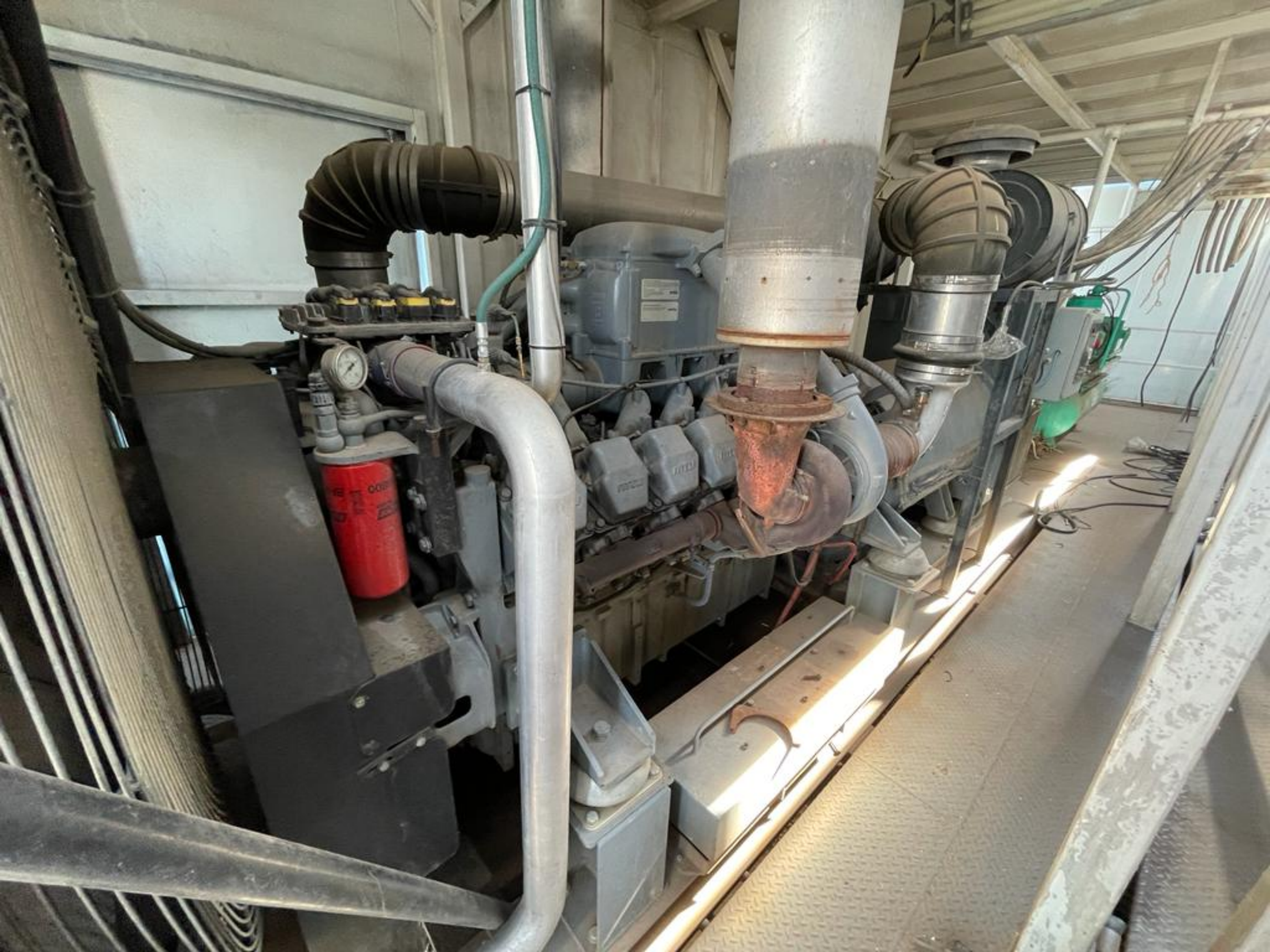
CALIFORNIA PROPOSITION 65 WARNING

USE, LEAK, OR EXHAUST GAS AND OILS OF THIS ENGINE CAN EXPOSE YOU AND OTHERS TO CHEMICALS AND AGENTS KNOWN TO THE STATE OF CALIFORNIA TO CAUSE CANCER, BIRTH DEFECTS, AND OTHER REPRODUCTIVE HAZARD.

mtu

MTU America Inc.

15 11000000









MAGNAMAX DVB

SYNCHRONOUS AC GENERATOR

MODEL 744/SS5035
SERIAL WA-581382-1112
FRAME 744 RPM 1800
PH 3 HZ 60 TYPE FSS
ENCL IP22 PF 0.7 AMB 40 °C
INS CLASS H1 RISE B RES 80 °C
FIELD AMPS 2.2 FIELD VOLTS 55

CONTINUOUS

KW 915 VOLTS 600
KVA 1307 AMPS 1255

STANDBY SERVICE

KW
KVA
VOLTS
AMPS

BEARING NA
REGULATOR NO.

BEARING A-7812R-110
VOLTS 180 300

GREASING INSTRUCTIONS

LUBRICATE GENERATOR EVERY 3000 OPERATING
HOURS OR ANNUALLY WITH 4.2 CUBIC INCHES OF
EXXON POLYREX-EM OR EQUIVALENT GREASE WITH A
TEMPERATURE RANGE OF -30 °C TO 175 °C

FOR MORE INFORMATION
CONTACT YOUR LOCAL
DISTRIBUTOR OR
MAGNUM ELECTRIC





EMISSION CONTROL INFORMATION

THIS ENGINE MEETS U.S. EPA EMISSION STANDARDS UNDER 40 CFR 101.621 AND COMPLIES WITH CALIFORNIA EMISSION REQUIREMENTS UNDER 13 CCR 242.316. SELLING OR INSTALLING THIS ENGINE FOR ANY PURPOSE OTHER THAN FOR THE EQUIPMENT'S LEGALITY PROVISIONS OF 40 CFR 101.621 AND 13 CCR 242.316 MAY BE A VIOLATION OF FEDERAL AND/OR STATE LAW SUBJECT TO CIVIL PENALTY.

ENGINE FAMILY: AMOSUL 8000
POWER CATEGORY: 750 kW
PLEASE CONTACT MTU AMERICA INC. AT (386) 340-8800
OR BY MAIL AT 1805 MACKINAC DRIVE, NILES, MICHIGAN
44891 FOR FURTHER INFORMATION ABOUT THIS ENGINE.
UNIT: 12012000
MTU America Inc.

WFO DATE 04/00/14

CRF: 31.8

OPERATING FUEL: DIESEL

mtu

95 35 MACH 475

CALIFORNIA PROPOSITION 65 WARNING

USE, LEAKS, EXHAUST GAS AND OILS OF THIS EQUIPMENT'S
AND MACHINERY TO THE STATE OF CALIFORNIA TO CAUSE CANCER,
BIRTH DEFECTS, AND OTHER REPRODUCTIVE HAZARD.

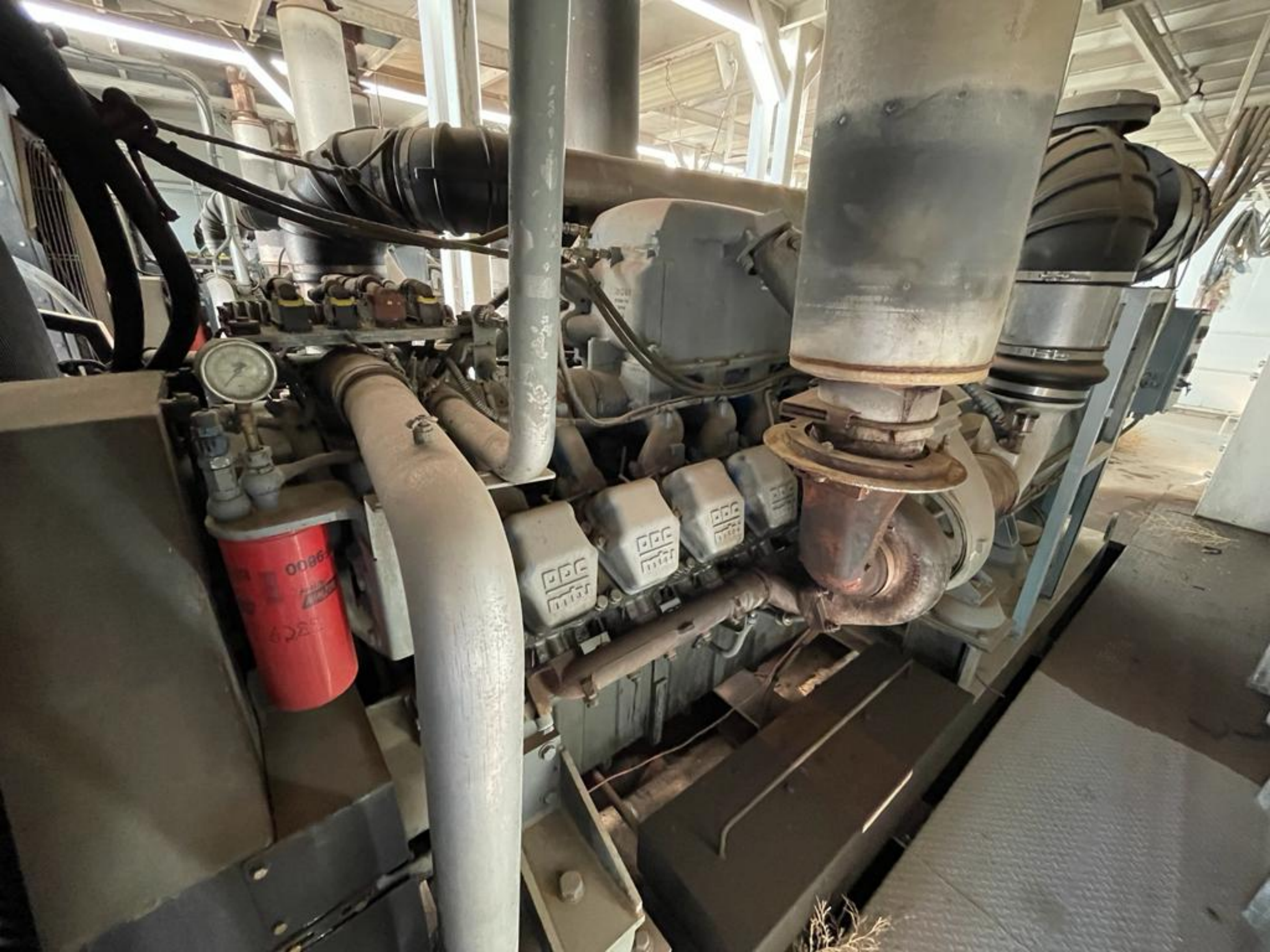
MTU America Inc.

mtu

15 11000000







BEHR

A 356-T6

6709

NAF

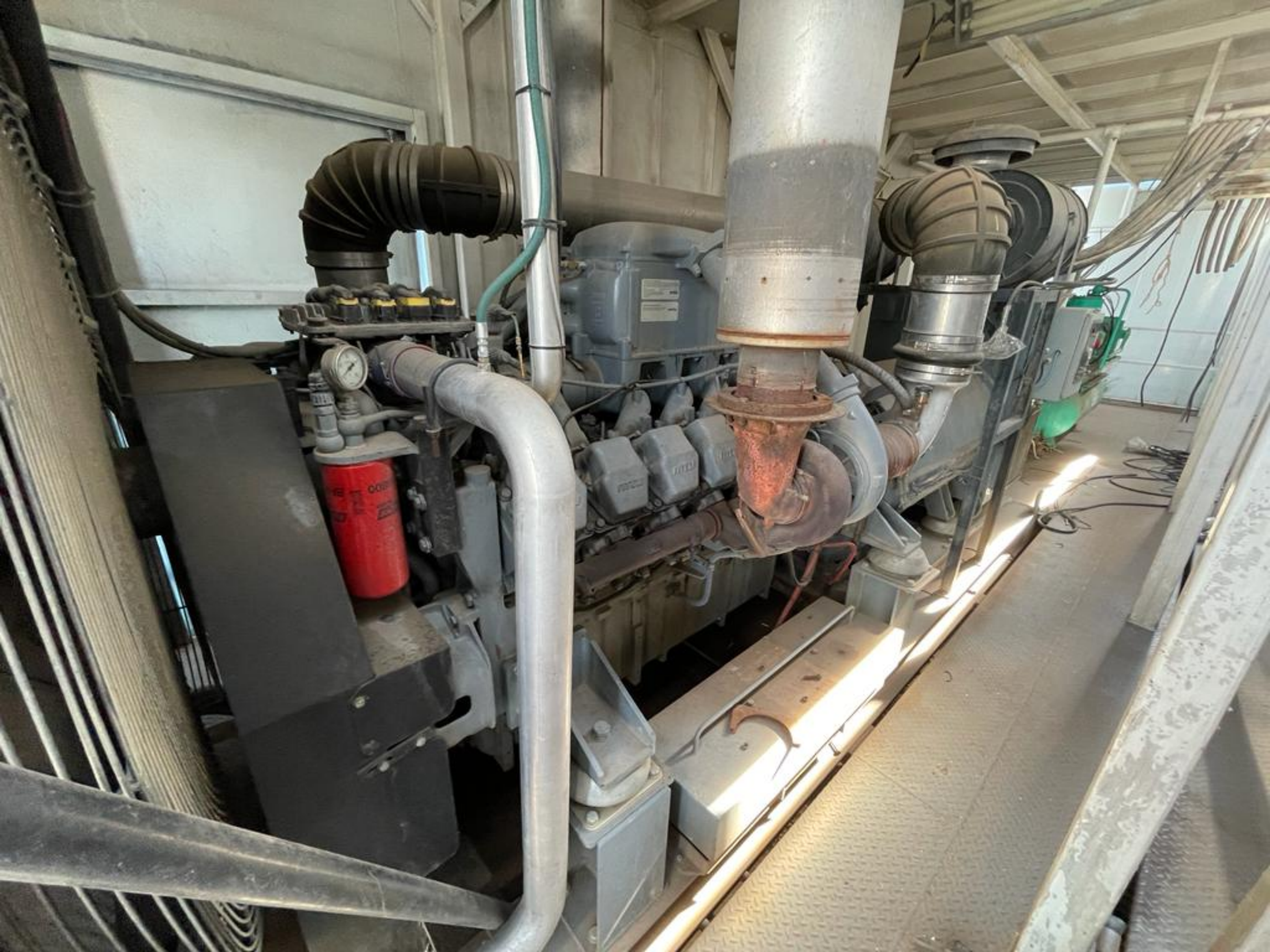
① 171 01

H-1756

STAHLE

M5-15







24 VOLT
SYSTEM



EMISSION CONTROL INFORMATION

THIS ENGINE MEETS U.S. EPA EMISSION STANDARDS UNDER 40 CFR 101.621 AND COMPLIES WITH CALIFORNIA EMISSION REQUIREMENTS UNDER 13 CCR 242316. SELLING OR INSTALLING THIS ENGINE FOR ANY PURPOSE OTHER THAN FOR THE EQUIPMENT'S LEGALITY PROVISIONS OF 40 CFR 101.621 AND 13 CCR 242316 MAY BE A VIOLATION OF FEDERAL AND/OR STATE LAW SUBJECT TO CIVIL PENALTY.

ENGINE FAMILY: AMOLUS 8000
POWER CATEGORY: 750 kW
PLEASE CONTACT MTU AMERICA INC. AT (386) 340-8800
OR BY MAIL AT 1825 MACKINAC DRIVE, NILES, MICHIGAN
44891 FOR FURTHER INFORMATION ABOUT THIS ENGINE.
UNIT: 12012000
MTU America Inc.

WFO DATE 04/00/14

CRF: 31.8

OPERATING FUEL: DIESEL

mtu

95 35 MACH 475

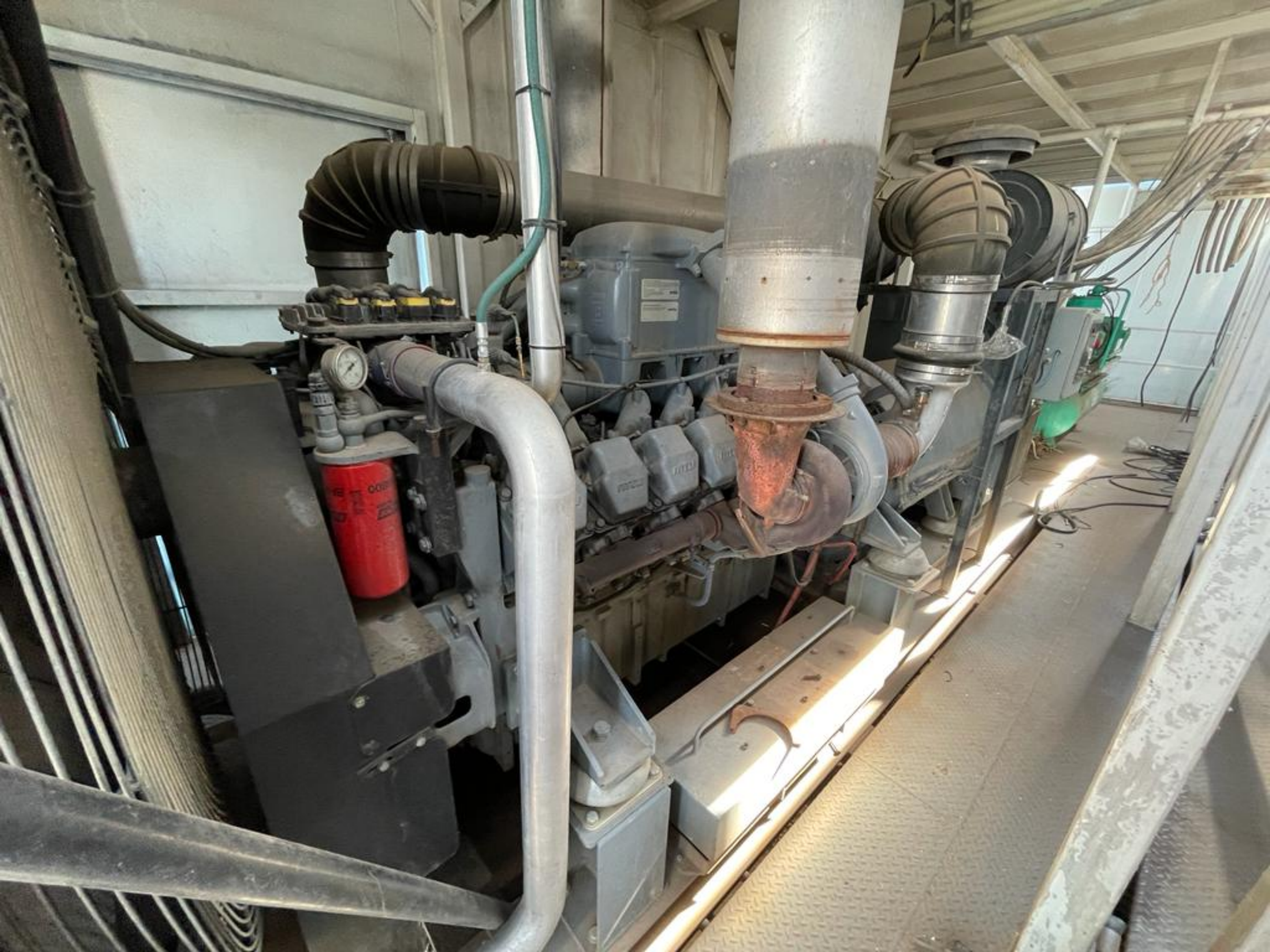
CALIFORNIA PROPOSITION 65 WARNING

USE, LEAK, OR EXHAUST GAS AND OILS OF THIS ENGINE CAN EXPOSE YOU AND OTHERS TO CHEMICALS KNOWN TO THE STATE OF CALIFORNIA TO CAUSE CANCER, BIRTH DEFECTS, AND OTHER REPRODUCTIVE HAZARDS.

mtu

MTU America Inc.

15 11000000









MAGNAMAX DVB
SYNCHRONOUS AC GENERATOR

MODEL 744/SS5035
SERIAL WA-581382-1112
FRAME 744 RPM 1800
PH 3 HZ 60 TYPE FSS
ENCL IP22 PF 0.7 AMB 40 °C
INS CLASS H1 RISE B RES 80 °C
FIELD AMPS 2.2 FIELD VOLTS 55

CONTINUOUS

KW 915 VOLTS 600
KVA 1307 AMPS 1255

STANDBY SERVICE

KW
KVA
VOLTS
AMPS

BEARING NA
REGULATOR NO.

BEARING A-7812R-110
VOLTS 180 300

GREASING INSTRUCTIONS

LUBRICATE GENERATOR EVERY 3000 OPERATING
HOURS OR ANNUALLY WITH 4.2 CUBIC INCHES OF
EXXON POLYREX-EM OR EQUIVALENT GREASE WITH A
TEMPERATURE RANGE OF -30 °C TO 175 °C

FOR MORE INFORMATION
CONTACT YOUR LOCAL
DISTRIBUTOR OR
CALL 1-800-368-5800









NOTICE
HARD HATS, SAFETY SHOES
AND STEEL-TOED BOOTS
REQUIRED IN THIS AREA

SAFETY FIRST
REPORT ALL ACCIDENTS,
NO MATTER HOW SMALL,
TO YOUR SUPERVISOR

DANGER
HIGH
VOLTAGE

NOTICE
WEARING PROTECTIVE
EQUIPMENT IS YOUR DUTY

NOTICE
AUTHORIZED
PERSONNEL
ONLY

DANGER
NO
SMOKING





CONFINED
SPACE
KEEP
CLOSED



















DANGER
NO SMOKING
NO OPEN FLAME

CONDENSATE
DRAIN VALVE





NOTICE NOTICE
DANGER HIGH VOLTAGE
NO SMOKING







