























SHOP ORDER

P 0684



DATE MANUFACTURED

200506

HEIGHT

142

FT.

API NO. 4F-0070 2nd EDITION
MANUFACTURER SERIAL NO:

DAMP156237

MAX. STATIC HOOK LOAD
TRAVELING BLOCK

763,000

LBS. WITH

12

LINE(S) TO

CAUTION: ACCELERATION OR IMPACT, ALSO SETBACK AND WIND

LOADS WILL REDUCE THE MAXIMUM RATED STATIC HOOK LOAD
CAPACITY. THE DEAD LINE ANCHOR SHOULD NOT BE SHIFTED
FROM ITS ESTABLISHED POSITION WITHOUT CONSULTING THE
MANUFACTURE. ALL BOLTS AND PINS SHOULD BE PROPERLY
INSTALLED PRIOR TO USE

MAX. WIND RESISTANCE

72

KNOTS WITH MAX. PIPE SETBACK

SUPERIOR DERRICK SERVICE, LLC.
ST. MARTINVILLE, LOUISIANA









400
TON















NOTICE
SAFETY FIRST
DANGER
HIGH VOLTAGE
NO SMOKING
AUTHORIZED PERSONNEL ONLY











CHECK
CROWN-O-MATIC
DAILY









CLINTON TRAIL WORKS

PERMISSIBLE MAXIMUM HOOK LOADS

	1000 LBS	1500 LBS	2000 LBS	2500 LBS
LOW	264,000	292,000	323,000	358,000
HIGH	225,000	255,000	290,000	330,000
LOW	142,000	190,000	227,000	262,000
HIGH	87,000	111,000	144,000	155,000

LOADS INDICATED ABOVE ARE MAXIMUM PERMISSIBLE
REGARDLESS OF POWER AVAILABLE
AND ARE NOT OBTAINED AT LESS THAN RATED HORSE POWER

OILWELL

Division of United States Steel



LUBRICATION

LUBRICATE WITH GOOD GRADE
BEARING GREASE

LUBRICATE DAILY
OUTPUT SHAFT BEARING ROTARY SIDE
INPUT SHAFT BEARING ROTARY SIDE
DRIVE SHAFT BEARING ROTARY SIDE
DRIVER'S SIDE
INPUT SHAFT BEARING DRIVER'S SIDE
DRIVE SHAFT BEARING DRIVER'S SIDE
DRILLER'S SIDE
DRILLER'S SIDE

LUBRICATE WEEKLY
SUMMER SHAFT BEARING ROTARY SIDE
WINTER SHAFT BEARING ROTARY SIDE
DRIVER'S SIDE
DRILLER'S SIDE

Q11-840 LRA VV WORKS

RECOMMENDED MAXIMUM HOOK LOADS

FROM
CLUTCH

MAXIMUM
CAPACITY

3 LINES

2 LINES

1 LINE

LOW

334,000

32,000

52,000

LOW

HIGH

325,000

285,000

340,000

390,000

LOW

142,000

190,000

227,000

262,000

HIGH

87,500

111,000

144,000

155,000

LOADS INDICATED ABOVE ARE MAXIMUM PERMISSIBLE
REGARDLESS OF POWER AVAILABLE
AND ARE NOT OBTAINED AT LESS THAN RATED HORSE POWER

OILWELL



LUBRICATION

USE GRADE WITH GOOD GRADE
BEARING GREASE

LUBRICATE DAILY
OUTPUT SHAFT BEARING



EMERGENCY
OFF

ASSIGNMENT

1	2	3	OFF	1	2	3
MP1	DW/RT	MP2		DW/RT	DWB	MP2
DW/RT	MP2	MP1		MP1	DW/RT	DWB
MP1	MP2	DWB		DW/RT	DWB	MP1
MP1	DWB	MP2		DW/RT	MP2	DWB

IDM
EQUIPMENT
LTD
HOUSTON, TEXAS USA
www.idmequipment.com

DRAWWORKS/ROTARY

FWD OFF REV

DRAWWORKS/ROTARY

ROTARY TAKE





WYOMING

Emergency Services
Law Enforcement
Fire Department
Medical Services
Public Works
Transportation
Agriculture
Forestry
Mining
Energy
Education
Healthcare
Social Services
Economic Development
Tourism
Environment
Transportation
Agriculture
Forestry
Mining
Energy
Education
Healthcare
Social Services
Economic Development
Tourism
Environment

Emergency Services
Law Enforcement
Fire Department
Medical Services
Public Works
Transportation
Agriculture
Forestry
Mining
Energy
Education
Healthcare
Social Services
Economic Development
Tourism
Environment

Emergency Services
Law Enforcement
Fire Department
Medical Services
Public Works
Transportation
Agriculture
Forestry
Mining
Energy
Education
Healthcare
Social Services
Economic Development
Tourism
Environment

Emergency Services
Law Enforcement
Fire Department
Medical Services
Public Works
Transportation
Agriculture
Forestry
Mining
Energy
Education
Healthcare
Social Services
Economic Development
Tourism
Environment

NOTICE



DANGER
HIGH
VOLTAGE















LOW	23.400	23.400	23.400	23.400
HIGH	235.000	280.000	280.000	280.000
LOW	148.000	190.000	227.000	282.000
HIGH	12.500	111.000	144.000	155.000

TONS INDICATED ABOVE ARE MAXIMUM PERMISSIBLE
REGARDLESS OF POWER AVAILABLE
AND ARE NOT OBTAINED AT LESS THAN RATED HORSE POWER

OILWELL



LUBRICATION

A close-up photograph of a dark, textured surface, possibly a piece of fabric or paper, showing a repeating pattern of small, light-colored, rectangular marks arranged in a grid-like fashion. The marks appear to be embossed or printed, and the overall texture is grainy and uneven.







CAUTION
NON-POTABLE
WATER
DO NOT DRINK

CAUTION
NON-POTABLE
WATER
DO NOT DRINK









2653















CONFINED
SPACE
KEEP
CLOSED

CONFINED
SPACE
KEEP
CLOSED











NOTICE
SAFETY
DANGER
HIGH VOLTAGE

NOTICE
SAFETY
DANGER
NO SMOKING





NOTICE
SAFETY
FIRST
DANGER
HIGH
VOLTAGE

NOTICE
PERSONNEL
PROHIBITED
FROM
DANGER
NO
SMOKING

























DANGER
480
VOLTS

DANGER
HIGH
VOLTAGE





CNPC EQUIPMENT

MUD PUMP

TYPE F-1600
 MAX. INPUT POWER 1193 kW (1600 hp)
 STROKE 305 mm (12 inches)
 RATED PUMP SPEED 2000 rpm

WEIGHT 27020 kg (59570 lb)
 DIMENSIONS 4875 X 3292 X 2912 mm
 GEAR RATIO 4.20:1
 OIL CAPACITY 375 L (100 US gal)

LINER SIZE / RATED PRESSURE

in	7	8 1/2	9 1/2	10 1/2	11 1/2	12 1/2	13 1/2
MPa	23.6	25.4	27.4	29.7	32.2	34.5	34.5
PSI	343	3690	3975	4300	4670	5000	5000

SERIAL NO.

DATE OF MFG

EX-117-2091

LUBRICATION SPEC.

USE ANTI-CORROSIVE, ANTI-RUSTING,
 FOAMING S&P TYPE EXTREME PRESSURE
 FRAYING ADDITIVE GEAR LUBRICANT

+10°C ~ +65°C L-CKD 460 AGMA MILD
 -10°C ~ +38°C L-CKD 320 AGMA MILD
 -10°C ~ -15°C L-CKD 68 AGMA MILD

Trademark Origin: Baoji, China



BAOJI OILFIELD MACHINERY CO., LTD





CNPC EQUIPMENT

MUD PUMP



WARNING

THE ORIGINAL PARTS OF THE MANUFACTURER MUST BE USED FOR REPLACEMENT IF ANY OTHERWISE, IT MAY CAUSE A DAMAGE OF THE PUMP.

Trademark:



Origin: Baoji, China

BAOJI OILFIELD MACHINERY CO. LTD.



CNPC EQUIPMENT

MODEL NO.

STROKE

RATED

LINE

WARRANTY

DATE

BY

CE

BAOJI OILFIELD MACHINERY CO. LTD.







宝鸡石油机械有限责任公司

BAOJI LUBRICATING MACHINERY CO., LTD.

中国 宝鸡 BAOJI, CHINA

型号	1630	排量	冲数	120r/min	图号	AD4-2006	出厂日期	08.02	
名称	MUD PUMP	排量比	4208:1		重量	25.4t	长×宽×高	4426×3752×2511mm	
排量比		6:1/4	6:1/2	3:1/1		5	5 3/4	5 1/2	5
排量		32.2	35.0	35.0		5075	5075	5075	5075

LUBRICATION SPEC.

USE ANTI-CORROSIVE ANTI-RUSTING,
ANTI-FOAMING, SEPT TYPE EXTREME PRESSURE,
ANTI-PRAYING ADDITIVE GEAR LUBRICANT.
TEMP. +10°C TO +85°C AQUA MILD EP #7
TEMP. -70°C TO +35°C AQUA MILD EP #8
TEMP. -25°C TO +15°C AQUA MILD EP #2





CNPC EQUIPMENT

MUD PUMP

TYPE F-1600
MAX INPUT POWER 1193 kW (1600 hp)
STROKE 305 mm (12 inches)
RATED PUMP SPEED 2000 rpm

WEIGHT 27020 kg (59570 lb)
DIMENSIONS 4875 X 3292 X 2912 mm
GEAR RATIO 4.20:1
OIL CAPACITY 375 L (100 US gal)

LINER SIZE / RATED PRESSURE

in	7	8	9	10	11	12	13
MPa	23.6	25.4	27.4	29.7	32.2	34.5	36.5
PSI	343	3690	3975	4300	4670	5000	5300

SERIAL NO.

DATE OF MFG

EX-111-2091



LUBRICATION SPEC
USE ANTI-CORROSIVE ANTI-RUSTING
FOAMING S&P TYPE EXTREME PRESSURE
FRAYING ADDITIVE GEAR LUBRICANT
+10°C ~ +65°C L-CKD 460 AGMA MIL-PRC-155
-10°C ~ +38°C L-CKD 320 AGMA MIL-PRC-155
-10°C ~ +16°C L-CKD 68 AGMA MIL-PRC-155

Trademark



Origin: Baoji, China

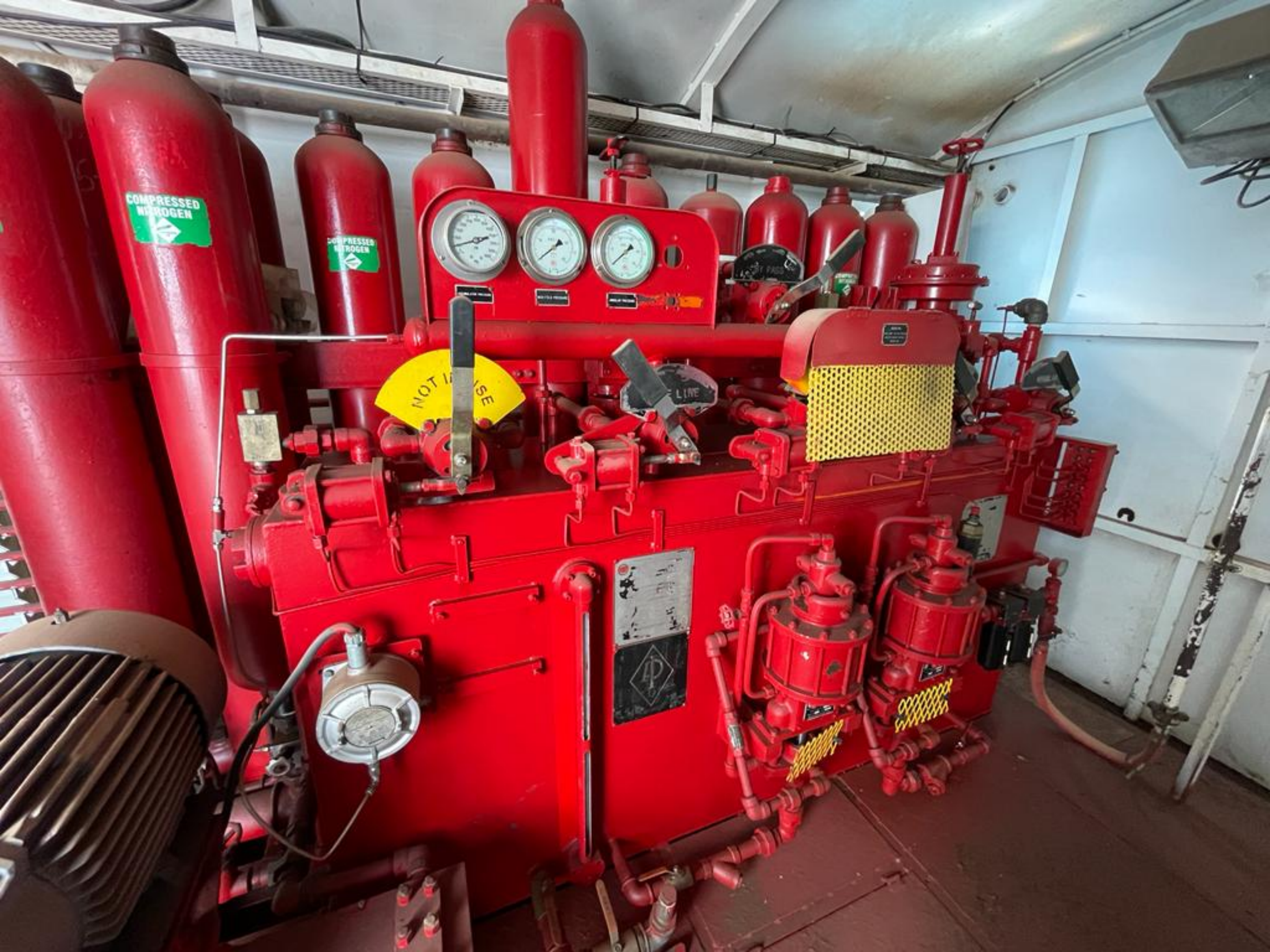
BAOJI OILFIELD MACHINERY CO., LTD

















DANGER
THIS UNIT STARTS AND
STOPS AUTOMATICALLY



















