

Blygold
Specialty Coatings and
Paints
Specialty Coatings and
Paints Division
Blygold Coatings
www.blygold.com

www.PetroRigs.com

www.PetroRigs.com

www.PetroRigs.com



FRIEDRICH





www.PetroRigs.com



www.PetroRigs.com

Friedrich

www.PetroRigs.com



www.PetroRigs.com



DRIVE FWD REV REMOTE
● ● ● ● ● ●
SEO REF



DIGITAL OPERATOR
JVOP-130

www.PetroRigs.com

LOCAL
REMOTE

MENU

ESC

JOG



DATA
ENTER

FWD
REV



RESET

RUN

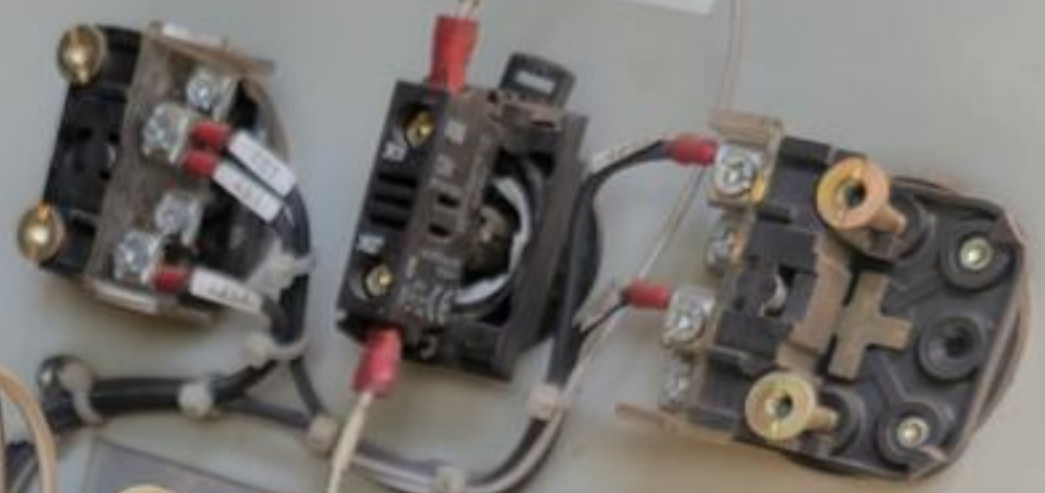
STOP

www.PetroRigs.com



Omron
Omron IDM Controls, Inc.
4115 N. HOUSTON ROSS LN. HO.
HOUSTON, TEXAS 77068
713-849-1900
WWW.IDMCONTROLS.COM
1200A GEN800A INV, ALTERN

15PLT1



www.PetroRigs.com

8GFM1

8M1

8P1T1



 **DANGER**
RISK OF ELECTRICAL SHOCK. DISCONNECT
INPUT POWER BEFORE SERVICING EQUIPMENT.

 D-C
BUS

 CONTROL
POWER



www.PetroRigs.com



111 112 113



www.PetroRigs.com

TESTED AND CALIBRATED BY
OMRON
OMRON IDM CONTROLS, INC.
AC CONTROL MODULE

PART NO.	_____			
SERIAL NO.	_____			
ENGINE	_____			
_____	_____			
FLYWHEEL	VOLTS	_____	H.R.	_____
MAG PICKUP	PHASE	_____	KVA	_____
FRIG.	TEETH	_____	KHZ	_____
NOTES	_____	HZ AT	_____	RPM
DATE	_____	_____	_____	_____

221.01.004 MADE IN USA

www.PetroRigs.com

Blygold
Blygold is a leading provider of industrial equipment and services. For more information, visit www.blygold.com.

A rack of 16 fiber optic patch panels, each labeled "ULTRASAFE". The panels are arranged in two rows of eight. Each panel has a top row of ports with blue fiber optic connectors and a bottom row of ports with black fiber optic connectors. Cables are plugged into the top row ports and are labeled with "F" followed by a number (F1 through F16). The rack is mounted on a metal frame with a perforated metal ceiling above it.

www.PetroRigs.com

A rack containing several components. On the left, there are three fiber optic patch panels. In the center, there is a red component labeled "ASE 740E". To the right of the ASE component is a grey component labeled "POTENTIAL TRANSFORMER". The rack is mounted on a metal frame with a perforated metal ceiling above it.

A rack containing a brown component with a label and a barcode. The label includes technical specifications and a barcode. The rack is mounted on a metal frame with a perforated metal ceiling above it.

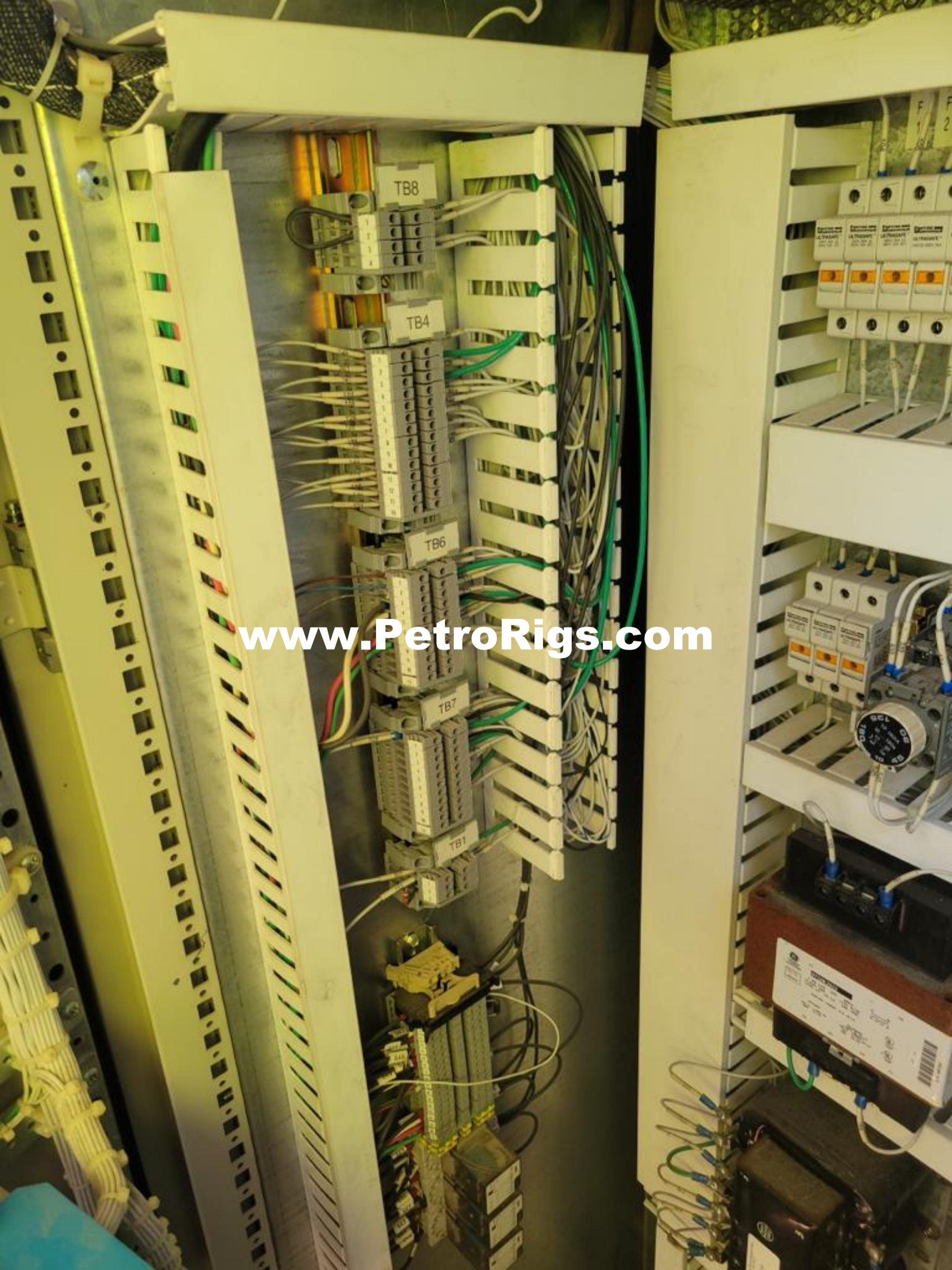
www.PetroRigs.com



www.PetroRigs.com



www.PetroRigs.com





www.PetroRigs.com



www.PetroRigs.com

www.PetroRigs.com

OMRON
OMRON DIV. CONTROLS, INC.
AC CONTROL MODULE

PART NO.	_____	JOB NO.	_____
SERIAL NO.	_____	PHASE	_____
ENGINE	_____	PHASE	_____
SPEED	_____	PHASE	_____
GENERATOR	_____	PHASE	_____
PL/PHASE	_____	PHASE	_____
MAG PICKUP	_____	PHASE	_____
NOTES	_____	PHASE	_____
DATE	_____	PHASE	_____

225.20.394
MADE IN USA



www.PetroRigs.com



www.PetroRigs.com