

## **SLICKLINE SERVICE EQUIPMENT AND TOOLS FOR SALE**

Oil & Gas Service company offering Slickline Operations is now for sale. In business since July 03, 2003 providing professional Slickline Service to numerous operators all around the country. Now, after almost 20 years of successful operations, the company has made the decision to offer all of their equipment, tools, spare parts and supplies **FOR SALE!!**

All Slickline equipment, tools, parts and accessories that are currently in the companys inventory is being offered as an "All Inclusive" package deal.

- There are 4 Slickline units, fully tooled for 1" thru 3.5" for sweet & sour services. All Slickline units are supported with a pickup truck, wire spooler, additional wire spools in and multiple tools in multitude of sizes, Inconel tools and other necessary supplies to support a number of slickline operations.

The Hydraulic System performs smoothly under a multitude of circumstances. The Equipment is set up and capable of performing Numerous slickline operations.

We will look at and consider any serious and reasonable offer. Qualified buyers wanting to make an offer, may inspect all units, equipment, accessories and supplies at the owners yard in Wyoming.

**Asking Price:** \$3,000,000.00 to purchase all units, equipment, accessories and supplies etc. Inclusive price. Will entertain serious offers Only.

### **SLICKLINE UNIT #4:**

2010 KENWORTH T800, VIN: 1NKDLB9XXAJ262090, MILEAGE 96,825  
WITH 19-COM 249 WYOMING 82' UNIC CRANE



### **SUPPORT PICKUP #4:**

2011. 3500 Laramie Cummins Diesel. 4X4 – Mileage: 233,000 miles

Loaded leather heated seats, heated steering wheels, Quad cabs. Each have running boards, brush guards. 100 gallon methanol tanks.





### **SLICKLINE UNIT #3:**

**2006 INTERNATIONAL**



### **SUPPORT PICKUP #3:**

2011. 3500 Laramie Cummins Diesel. 4X4 – Mileage: 221,073 miles

Loaded leather heated seats , heated steering wheels ,Quad cabs. Each have running boards, brush guards. 100 gallon methanol tanks





## **SLICKLINE UNIT #2:**

**2005 INTERNATIONAL**



## **SUPPORT PICKUP #2:**

2011. 3500 Laramie Cummins Diesel. 4X4 – Mileage: 220,000 miles

Loaded leather heated seats , heated steering wheels ,Quad cabs. Each have running boards, brush guards. 100 gallon methanol tanks





## **SLICKLINE UNIT #1:**

**2002 INTERNATIONAL DT DT466 4400 WYO 19-COM-246**

**MILEAGE 202,844**



## **SUPPORT PICKUP #1:**

2011. 3500 Laramie Cummins Diesel. 4X4 – Mileage: 221,225 miles

Loaded leather heated seats , heated steering wheels ,Quad cabs. Each have running boards, brush guards. 100 gallon methanol tanks

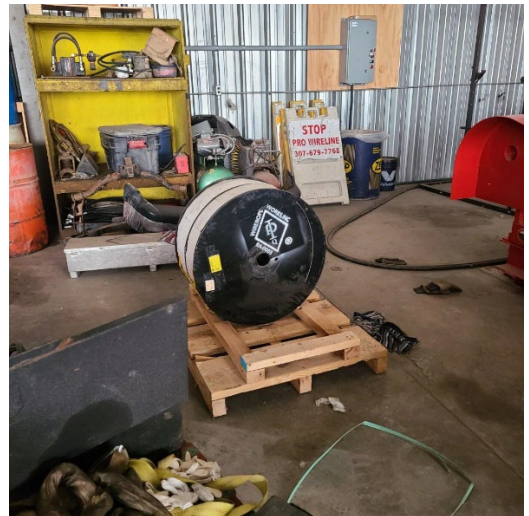




## ADDITIONAL EQUIPMENT, SUPPLIES and TOOLS



Hydraulic Slickline Wire Spooler



25,000' .160 ply steel wire



4 spools, 25,000' .108 ply steel wire



Inconel Tools: (6) 3.81 R Lock plugs and (2) R Running Tools

