

www.PetroRigs.com



A blue industrial valve assembly is mounted on a concrete floor. The valve has a cylindrical body with various ports and a handle on the left. A long blue pipe extends from the right side of the valve. On the floor in front of the valve, there is a pink-handled brush and a metal pipe. The background shows a white wall and some black cables.

www.PetroRigs.com

www.PetroRigs.com

Evac ME300



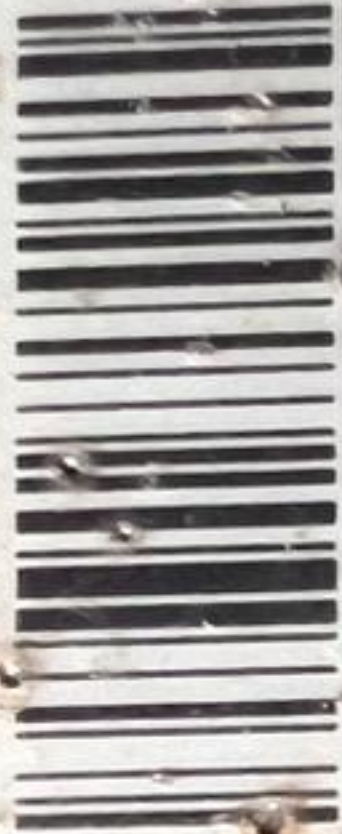


BUSCH

Busch Produktions GmbH
Schaünslandstrasse 1
D-79689 Maulburg

CE EAC

Year 2017 Made in Germany



Vacuum Pump

MM 1252 A VA8 Aqua

S/N = D17390728

$p_{abs} = 100 \text{ hPa (mbar)}$

$V_{max} = 290 \text{ m}^3/\text{h}$

$n_{max} = 3600 \text{ min}^{-1}$

$m \approx 240 \text{ kg}$

Oil = Busch VS 150

Oil quantity = 1,1 L

www.PetroRigs.com

H00

Q00



AE
1038.500
Ser.No. G0105057

RITTAL GmbH & Co. KG 35726 Herborn
Made in Germany FAUF.
Factory ID: H Issue No. K-4256



Type 1, 12, 4
ENCLOSURE

INDUSTRIAL CONTROL PANEL ENCLOSURE



Type 1, 12, 4

INDUSTRIAL CONTROL EQUIPMENT ENCLOSURE

To maintain UL Listing the appropriate frame, sidewalls,
and bottom panels shall be installed as per
instructions.
Pour maintenir la certification UL, le châssis, les parois
latérales, et les panneaux inférieurs doivent être
installés selon les instructions fournies par le fabricant.

CAUTION: Openings in this enclosure must be covered with
closure plates, systems or conduits with the same type
rating / IP rating as this enclosure.



www.PetroRigs.com

EVAC ME300

www.PetroRigs.com

EVAC Only





VACUUM PUMP
VP1

DISCHARGE PUMP
DP1

www.PetroRigs.com





www.PetroRigs.com

www.PetroRigs.com



Type TP- 5462015 A4

No 24403

Date 20/10/2017

Un 690 V

InA 32 A

fn 60 Hz

Icc kA

IP 54

EN61439 / IEC60092-302



www.PetroRigs.com

MANUFACTURER
TAS-POWER OY
ESPOO / FINLAND



P01

EVAC OnlineMax R

www.PetroRigs.com

CAUTION
DO NOT OPERATE FOR
ANY REASON
UNLESS YOU
ARE TRAINED



www.PetroRigs.com

www.PetroRigs.com

kW	Hz	V	A	cosφ		
7.5	60	690 Y	7.0			
S1 0-108-060						
AK 090967						
IEC 60034-1		I.cl	F	IP 55	S 1	CE
		3~Mot.		IE 3	eff 90.2%	
 BEVI		Type 3SIEK 132S-2B				
Blomstermåla, Sweden						
Produced by Cantoni						



www.PetroRigs.com

SEWAGE PUMP
ELAPSED TIME

VACUUM PUMP
ELAPSED TIME



SEWAGE PUMP
HIGH TEMPERATURE

PRESSURE SENSOR
FAILURE

SEWAGE PUMP

VACUUM PUMP

SEPAR



SEWAGE PUMP
ELAPSED TIME

VACUUM PUMP
ELAPSED TIME



SEWAGE PUMP
HIGH TEMPERATURE

PRESSURE SENSOR
FAILURE

RUNNING
DISCLOSED

MAINTENANCE
INDICATION

www.PetroRigs.com

SEWAGE PUMP
OVERLOAD

VACUUM PUMP
OVERLOAD

SEPARATION TUBE
HIGH LEVEL ALARM

VACUUM FAILURE AND
EXCESS RUN ALARM

SEWAGE PUMP
RUNNING

VACUUM PUMP
RUNNING

ISOLATION VALVE
OPEN CONTROL

COND. WATER VALVE
OPEN CONTROL

SEWAGE PUMP
MAN 0 AUTO

VACUUM PUMP
MAN 0 AUTO

ISOLATION VALVE
MAN 0 AUTO

COND. WATER VALVE
MAN 0 AUTO

MAN
SWITCH

CONT
STAGE

ALARM
RESET
TEST

EMERGENCY STOP



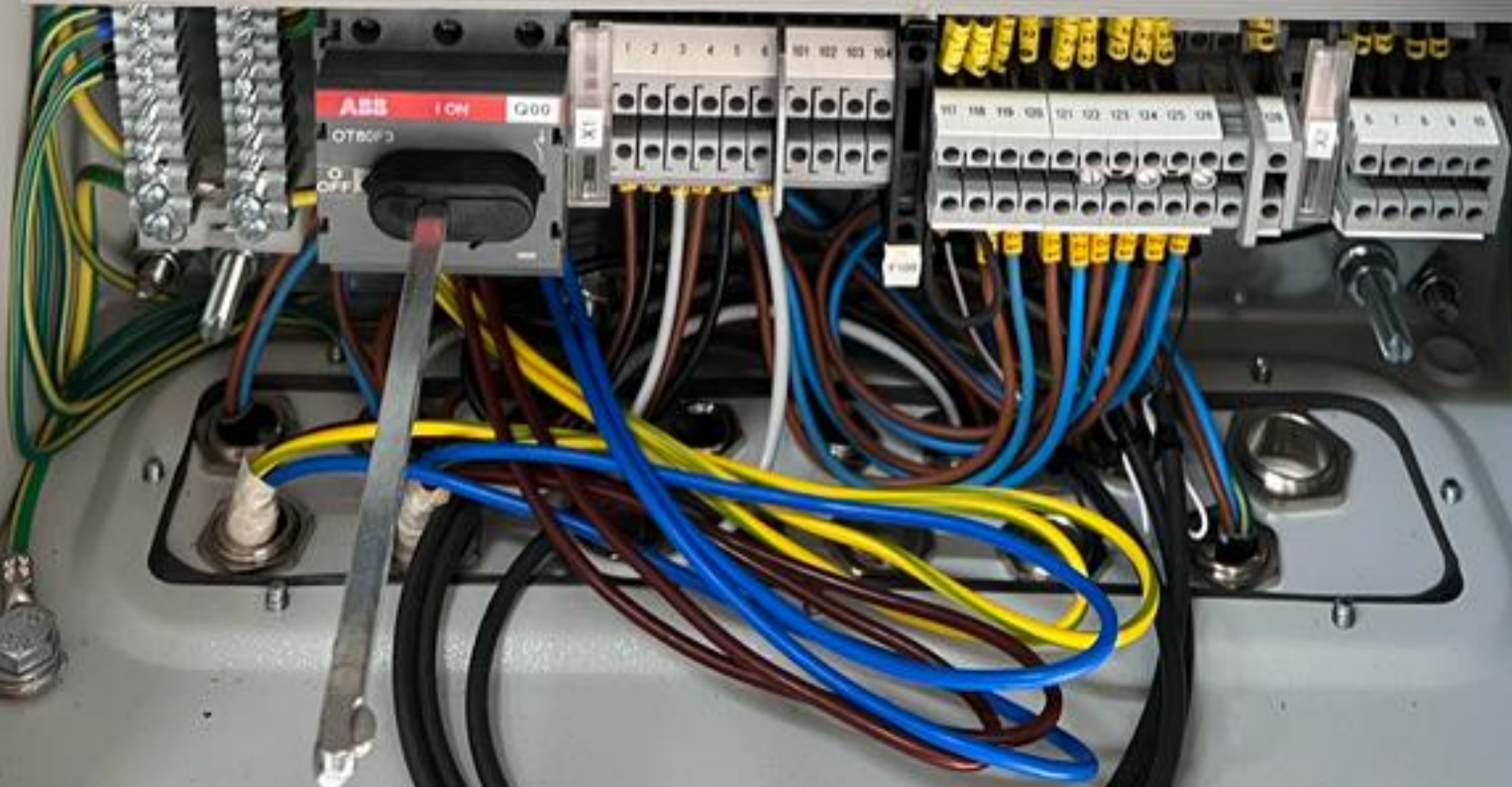


www.PetroRigs.com



www.PetroRigs.com





www.PetroRigs.com

Type TP- 5462015 A4

No	24403	Date	20/10/2017
Un	690 V	InA	32 A
fn	60 Hz	Icc	kA
IP	54	EN61439 / IEC60092-302	

MANUFACTURER
TAS-POWER OY
ESPOO / FINLAND



P02

P01



www.PetroRigs.com

H13

H12

H11

H10

H09

H07

H06

H05

H02

H01





Evac Online Unit

OnlineMax
OnlineFlex
OnlineVac

Type:

300R

Product no:

0550405

Serial no:

170541

Year:

2018

www.evac.com

www.PetroRigs.com