

PLAN VIEW

MK	SIZE & RATING	DESCRIPTION
(A)	12"-150# RF	CUSTOMER GAS INLET
(B)	2"-250# RFJ	CUSTOMER GAS OUTLET
(C)	6"-150# RF	1ST STAGE SUCTION PSV INLET
(D)	6"-150# RF	PSV VENT HEADER
(E)	1"-150# RF	SCRUBBER DRAIN
(F)	1-1/2"-250# RFJ	BLOW DOWN VENT
(G)	1"-150# RF	FORCE FEED LUBRICATOR OVER FLOW
(H)	2"-150# RF	OIL FILL/DRAIN CONNECTION
(I)	2"-150# RF	FRAME/ENGINE OIL DAY TANK FILL
(J)	2"-150# RF	CYLINDER OIL DAY TANK FILL
(K)	2"-150# RF	ENGINE OIL FILL & DRAIN
(L)	2"-150# RF	FUEL GAS INLET
(M)	3"-150# RF	FUEL GAS PSV VENT HEADER
(N)	3"-150# RF	STARTING SYSTEM INLET
(O)	4"-150# RF	STARTER EXHAUST
(P)	1" FNPT	ENGINE JACKET WATER DRAIN & FILL
(Q)	1" FNPT	ENGINE AUX. WATER DRAIN & FILL
(R)	20"-125/150# FF	AIR INLET (RIGHT BANK)
(S)	20"-125/150# FF	AIR INLET (LEFT BANK)
(T)	1" FNPT	INSTRUMENT AIR CONNECTION
(U)	1-1/2"-150# RF	PARKING VENT & DRAIN/TANK ROD VENT & DRAIN
(V)	2"-150# RF	DETACHABLE PRESSURE VENT
(W)	2"-150# RF	DETACHABLE PRESSURE VENT
(X)	1/2" SW	LUBE OIL COOLER DRAIN
(Y)	3/4" SW	PRE-LUBE PUMP LIFT/PEDESTAL SUMP DRAIN

SHOP TO PHASE THE ENGINE AND COMPRESSOR CRANKS SO THAT ODC OF THROW #1 OF THE COMPRESSOR OCCURS TO DEGREES AHEAD OF ENGINE CYLINDER #1 DURING STANDARD ENGINE ROTATION.

WEIGHTS
 MAIN SKID SHIPPING WEIGHT 146,060 lbs. - DRY WEIGHT
 MAIN SKID FOUNDATION WEIGHT 309,878 lbs. - INCLUDES COOLER & INTERCONNECT PIPING
 ENGINE WEIGHT 55,300 lbs.
 COOLER WEIGHTS 46,450 lbs.

OVERALL	LENGTH	WIDTH	HEIGHT
SHIPPING	540"	172 7/8"	134"

COMPRESSOR AREL J50/6	THROW #1	THROW #2	THROW #3
CYLINDERS	7 1/4/10	4 5/8-TR-V5	17 7/8/0

DRIVER COUPLING	THROW #4	THROW #5	THROW #6
DRIVER COUPLING	CATREPIILLAR C3612 LE	117 7/8/0	9 5/8/0

CG DIMENSIONS FROM DATUM			
	X	Y	Z
SHIPPING	257"	2"	14"
MAIN SKID FOUNDATION	282.32"	1.32"	21.03"

ASSEMBLY TOLERANCES		FABRICATION TOLERANCES	
PROCESS CONNECTIONS	±1/2"	CUTS	±1/8"
UTILITY CONNECTIONS	±1"	ANGLES	±1/2"
STRUCTURAL	±1/4"	WELD ASS'Y	±1/4"
ANCHOR BOLTS	±1/8"	FLANGE BOLT HOLES	±1/8"

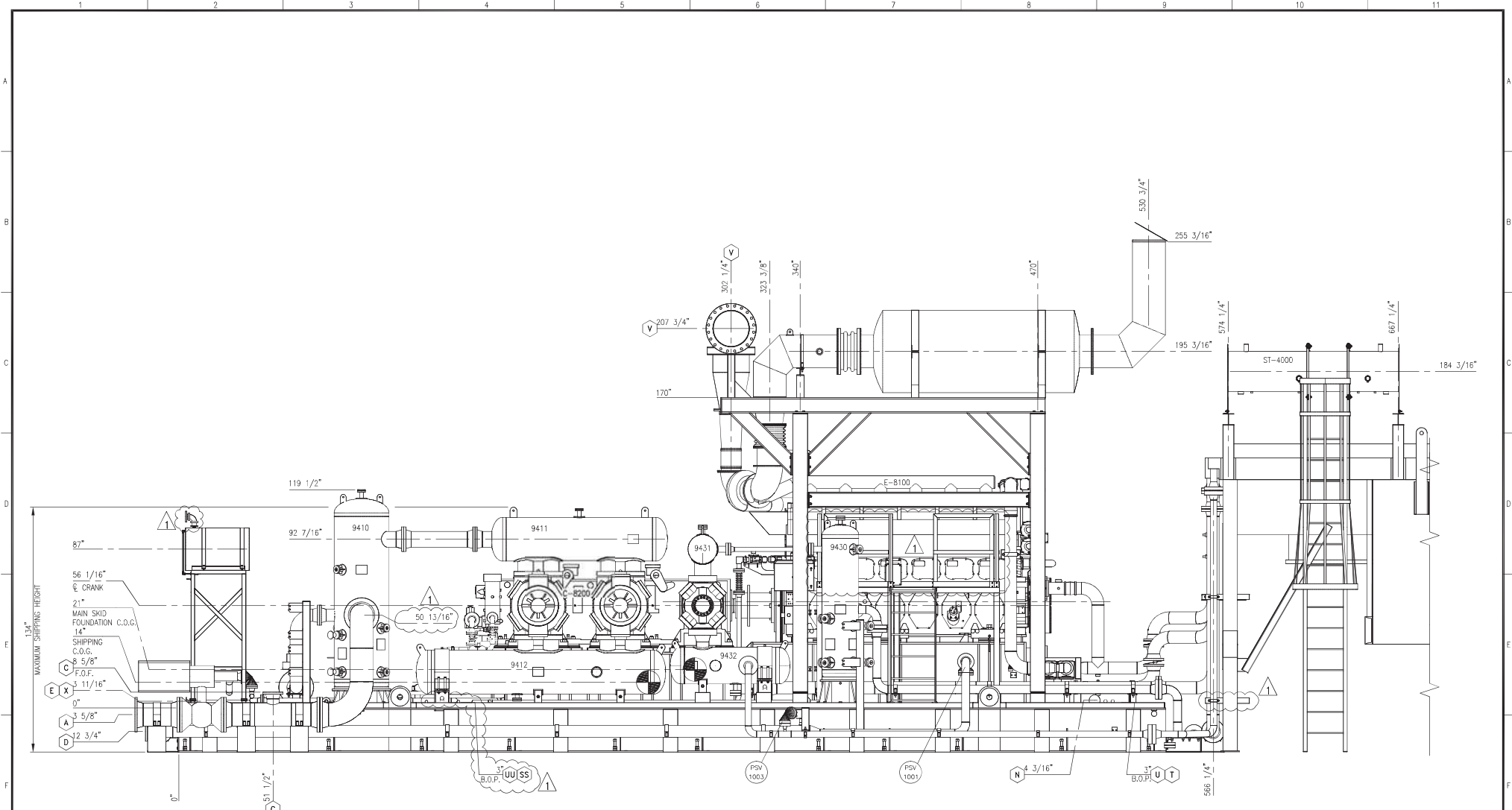
TUBING WALL THICKNESS	
DIA.	WALL THICKNESS
1/4"	0.035"
3/8"	0.049"
1/2"	0.049"
3/4"	0.063"
1"	0.095"

- NOTES**
- USE SHACKLE TYPE CROSBY B-2130, 55T FOR LIFTING.
 - AIR COMPRESSOR ASSEMBLY SHIPPED LOOSE & NOT SHOWN ON GA.
 - SCRUBBERS REMOVED FOR SHIPPING.
 - NO CONCRETE IN SKID OR PEDESTAL.
 - CONTROL PANEL ON SKID FOR SHIPPING.
 - SEE PROJECT WEIGHT SHEET FOR SHIPPED LOOSE ITEMS.
 - SEE DRAWING US-122803-01-HE-06-600 FOR ANCHOR BOLT LOCATION.
 - LAYOUT IS BASED ON UNIT LOCATED ON BARGE.
 - MAIN SKID FOUNDATION C.O.G. DOES NOT INCLUDE COOLER C.O.G.
 - SUPPORT BEAMS SHIPPED LOOSE TO BE PROPERLY ANCHORED WELDED TO BARGE BY CUSTOMER.



US-122803-01-HE-02-200
 THIS DRAWING APPLIES TO TASK NO'S 1

		CUSTOMER: PACIFIC RUBIALES ALBACORA INJECTION COMPRESSORS	
		TITLE: GENERAL ARRANGEMENT PLAN VIEW	
DRAWN: J. Sanchez	DATE: 3/9/2015	APPROVED: M. Delgado	SCALE: 3/8" = 1'-0"
DRAWING NO: US-122803-01-HE-02-200	SHEET NO./REV: 1 OF 5	PROJECT NO./PRODUCT I.D. NO.: 8444 50899999 Rev. Houston, TX 77041 (281) 854-3000	UNIT: 1/16" INCH



VIEW A-A



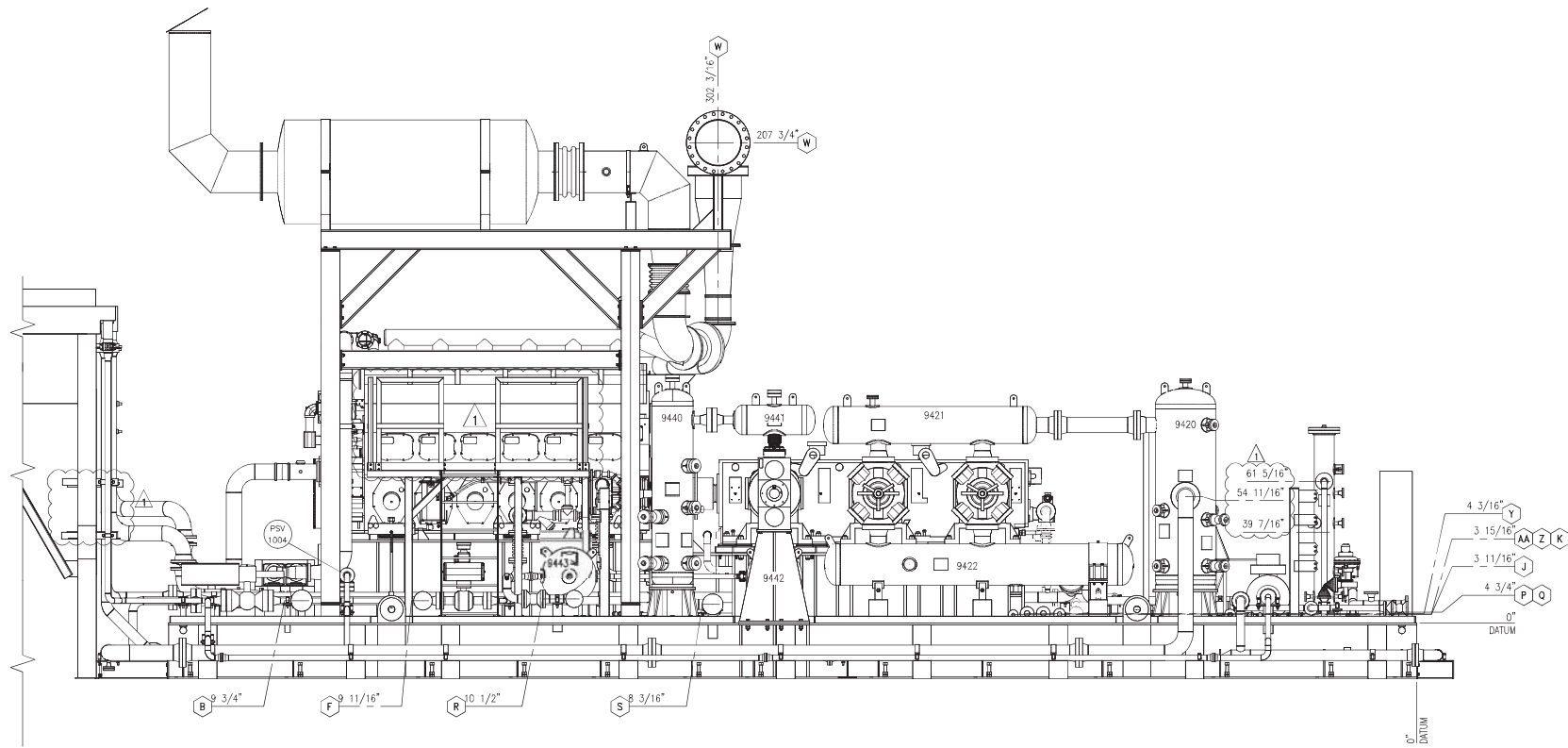
ASSEMBLY TOLERANCES		FABRICATION TOLERANCES	
PROCESS CONNECTIONS	±1/2"	CUTS	±1/8"
UTILITY CONNECTIONS	±1"	ANGLES	±1/2"
STRUCTURAL	±1/4"	WELD ASS'Y	±1/4"
ANCHOR BOLTS	±1/8"	FLANGE BOLT HOLES	±1/8"

REV.	DESCRIPTION	DATE	BY	CHK	APP'D
1	AS BUILT	5/27/15	JM	M.D.	M.D.
2	ISSUED FOR CONSTRUCTION	3/5/2015	J.S.	M.D.	M.D.

THIS DRAWING CONTAINS CONFIDENTIAL INFORMATION AND IS THE PROPERTY OF EXTERRAN. ITS CONTENTS MAY NOT BE COPIED, REPRODUCED, OR TRANSMITTED IN ANY FORM OR BY ANY MEANS, ELECTRONIC OR MECHANICAL, INCLUDING PHOTOCOPYING, RECORDING, OR BY ANY INFORMATION STORAGE AND RETRIEVAL SYSTEM, WITHOUT THE EXPRESS WRITTEN PERMISSION OF EXTERRAN HOLDINGS, INC. ALL RIGHTS RESERVED.



CUSTOMER		PACIFIC RUBIALES	
		ALBACORA INJECTION COMPRESSORS	
TITLE			
GENERAL ARRANGEMENT			
VIEW A-A			
DRAWN	DATE	APPROVED	SCALE - 3/8" = 1'-0" (NO. REDUC)
J. Sanchez	3/5/2015	M. Delgado	N.I.S. 1/8" PER UNIT
DRAWING NO.	US-122803-01-HE-02-200	SHEET NO./REV.	2 OF 5 1



VIEW B-B



ASSEMBLY TOLERANCES		FABRICATION TOLERANCES	
PROCESS CONNECTIONS	±1/2"	CUTS	±1/8"
UTILITY CONNECTIONS	±1"	ANGLES	±1/2"
STRUCTURAL	±1/4"	WELD ASS'Y	±1/4"
ANCHOR BOLTS	±1/8"	FLANGE BOLT HOLES	±1/8"

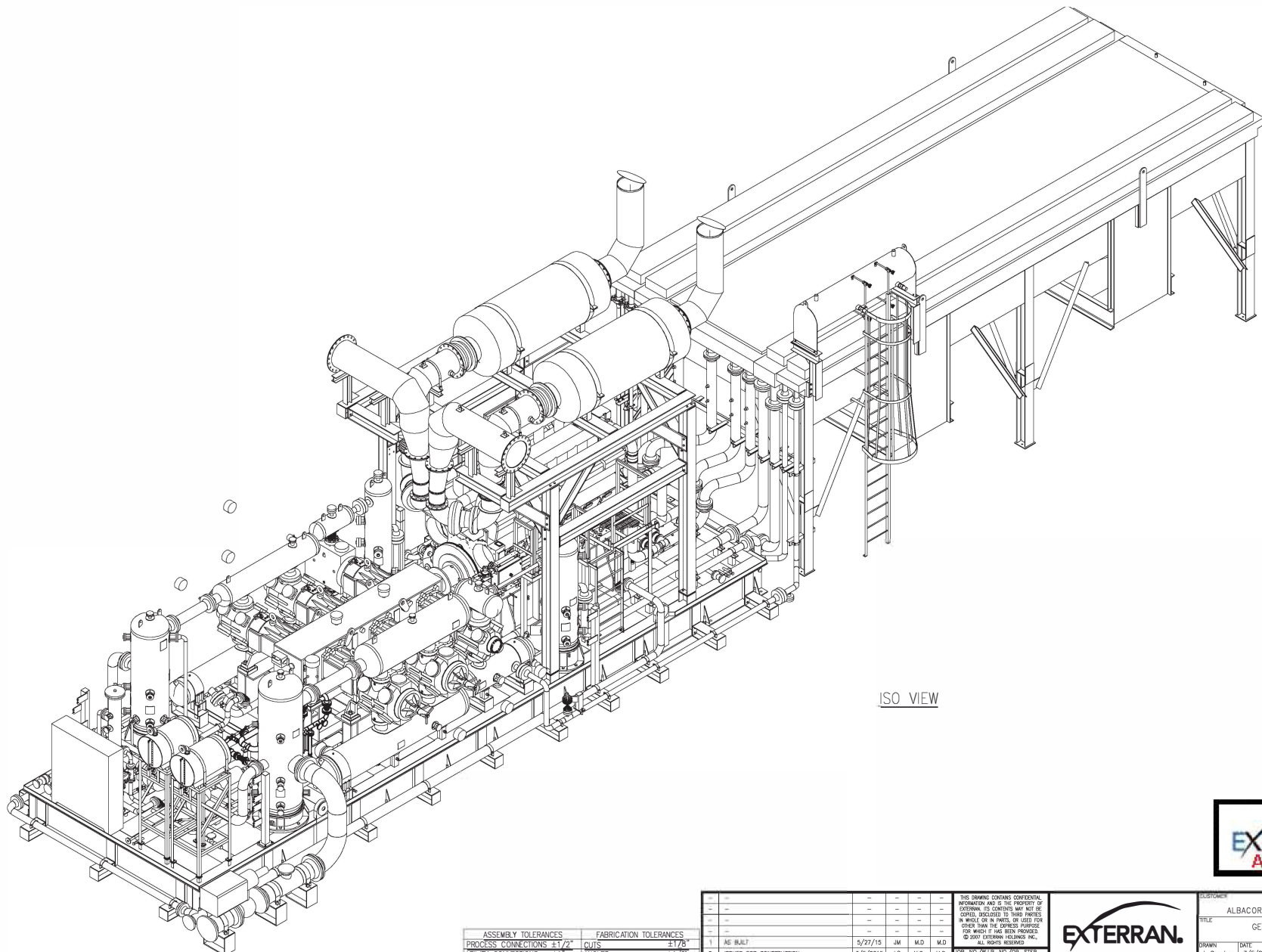
REV.	DESCRIPTION	DATE	BY	CHK	APP'D
1	AS BUILT	5/27/15	JM	M.D.	M.D.
0	ISSUED FOR CONSTRUCTION	3/5/2015	J.S.	M.D.	M.D.

THIS DRAWING CONTAINS CONFIDENTIAL INFORMATION AND IS THE PROPERTY OF EXTERRAN. ITS CONTENTS MAY NOT BE COPIED, REPRODUCED, OR TRANSMITTED IN ANY FORM OR BY ANY MEANS, ELECTRONIC OR MECHANICAL, INCLUDING PHOTOCOPYING, RECORDING, OR BY ANY INFORMATION STORAGE AND RETRIEVAL SYSTEM, WITHOUT THE EXPRESS WRITTEN PERMISSION OF EXTERRAN HOLDINGS INC. ALL RIGHTS RESERVED.

EXTERRAN.

4444 Briarstone Rd.
Houston, TX 77041 (281) 854-3000

CUSTOMER		PACIFIC RUBIALES	
		ALBACORA INJECTION COMPRESSORS	
TITLE			
GENERAL ARRANGEMENT			
VIEW B-B			
DRAWN	DATE	APPROVED	SCALE
J. Sanchez	3/5/2015	M. Delgado	1/1" PER UNIT
DRAWING NO.	US-122803-01-HE-02-200	SHEET NO./REV.	3 OF 5 / 1



ISO VIEW



ASSEMBLY TOLERANCES		FABRICATION TOLERANCES	
PROCESS CONNECTIONS	±1/2"	QUIS	±1/8"
UTILITY CONNECTIONS	±1"	ANGLES	±1/2"
STRUCTURAL	±1/4"	WELD ASS'Y	±1/4"
ANCHOR BOLTS	±1/8"	FLANGE BOLT HOLES	±1/8"

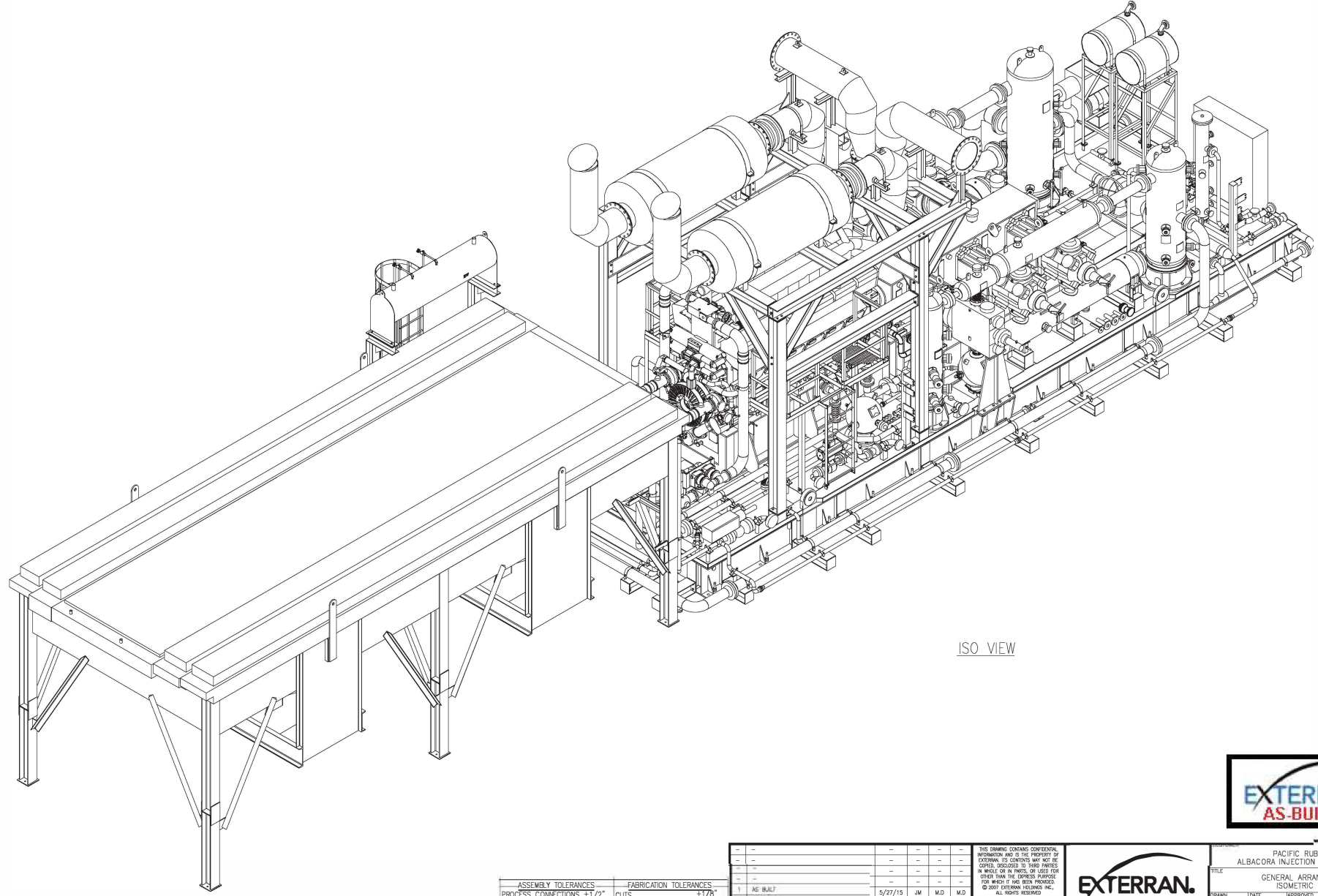
REV	DESCRIPTION	DATE	BY	CK	APP'D
1	AS BUILT	5/27/15	JM	M.D.	M.D.
0	ISSUED FOR CONSTRUCTION	3/5/2015	J.S.	M.D.	M.D.

THIS DRAWING CONTAINS CONFIDENTIAL INFORMATION AND IS THE PROPERTY OF EXTERRAN. ITS CONTENTS MAY NOT BE COPIED, DISCLOSED TO THIRD PARTIES IN WHOLE OR IN PART, OR USED FOR OTHER THAN THE EXPRESS PURPOSES FOR WHICH IT HAS BEEN PROVIDED. ©2007 EXTERRAN HOLDINGS INC. ALL RIGHTS RESERVED.

4444 Brittonmore Rd
Houston, TX, 77041 (281) 854-3000

CUSTOMER			
PACIFIC RUBIALES ALBACORA INJECTION COMPRESSORS			
TITLE			
GENERAL ARRANGEMENT ISOMETRIC VIEW			
DRAWN	DATE	APPROVED	SCALE - 3' SIZE NO. REVISIONS
J. Sanchez	3/5/2015	M. Delgado	N.T.S. 1/PER UNIT
DRAWING NO.			Sheet No. Rev.
US-122803-01-HE-02-200			4 OF 5 1

DATE: 03/05/15 REV: 0



ISO VIEW



ASSEMBLY TOLERANCES		FABRICATION TOLERANCES	
PROCESS CONNECTIONS	±1/2"	CURS	±1/8"
UTILITY CONNECTIONS	±1"	ANGLES	±1/2°
STRUCTURAL	±1/4"	WELD ASSY	±1/4"
ANCHOR BOLTS	±1/8"	FLANGE BOLT HOLES	±1/8"

REV.	DESCRIPTION	DATE	BY	CHK	APPR'D
1	AS BUILT	5/27/15	JM	M.D.	M.D.
2	ISSUED FOR CONSTRUCTION	3/5/2015	J.S.	M.D.	M.D.

THIS DRAWING CONTAINS CONFIDENTIAL INFORMATION AND IS THE PROPERTY OF EXTERRAN. ITS CONTENTS MAY NOT BE COPIED, DISCLOSED TO THIRD PARTIES IN WHOLE OR IN PART, OR USED FOR OTHER THAN THE EXPRESS PURPOSES FOR WHICH IT HAS BEEN PROVIDED. © 2007 EXTERRAN HOLDINGS INC. ALL RIGHTS RESERVED.



PACIFIC RUBIALES ALBACORA INJECTION COMPRESSORS	
GENERAL ARRANGEMENT ISOMETRIC VIEW	
DRAWN: a. Sanchez	DATE: 3/5/2015
APPROVED: M. Delgado	SCALE: 3' SIZE: NO. REV'D: 1/PER UNIT
US-122803-01-HE-02-200	
5 OF 5	

DATE PLOTTED: 02/17/2015