



www.PetroRigs.com

Cummins Power Generation

sudhir

sudhir

www.PetroRigs.com



SilentPower

A row of teal industrial generators, likely used in oil and gas operations. The generators are arranged in a line, with a metal mesh screen visible on the left side. The teal paint shows signs of wear and rust, particularly around the doors and joints. The background shows some greenery and a clear sky.

www.PetroRigs.com



AC GENERATOR

TYPE **H101544NS**
SERIAL NO. **101610132836**

PF **0.8** AMB. TEMP **40°C** Hz **50** PHASE **3**
VOLTS **415** EXC. AMPS **23** STR. WDG **31**
RPM **1500** **4** S.S. STAR
INS. CLASS **H** ENCLOSURE **IP23**

PRIME RATING kVA **600** AMPS **834.7**
DUTY **CONT.**

STANDBY RATING kVA **660** AMPS **918.2**
DUTY **STANDBY**

WARNING REFER TO INSTRUCTION BOOK BEFORE WASH OR MEGGER TESTING


IS /IEC 60034-1



C33, MIDC, AHMEDNAGAR, 414 111, MAHARASHTRA, INDIA

A047E018

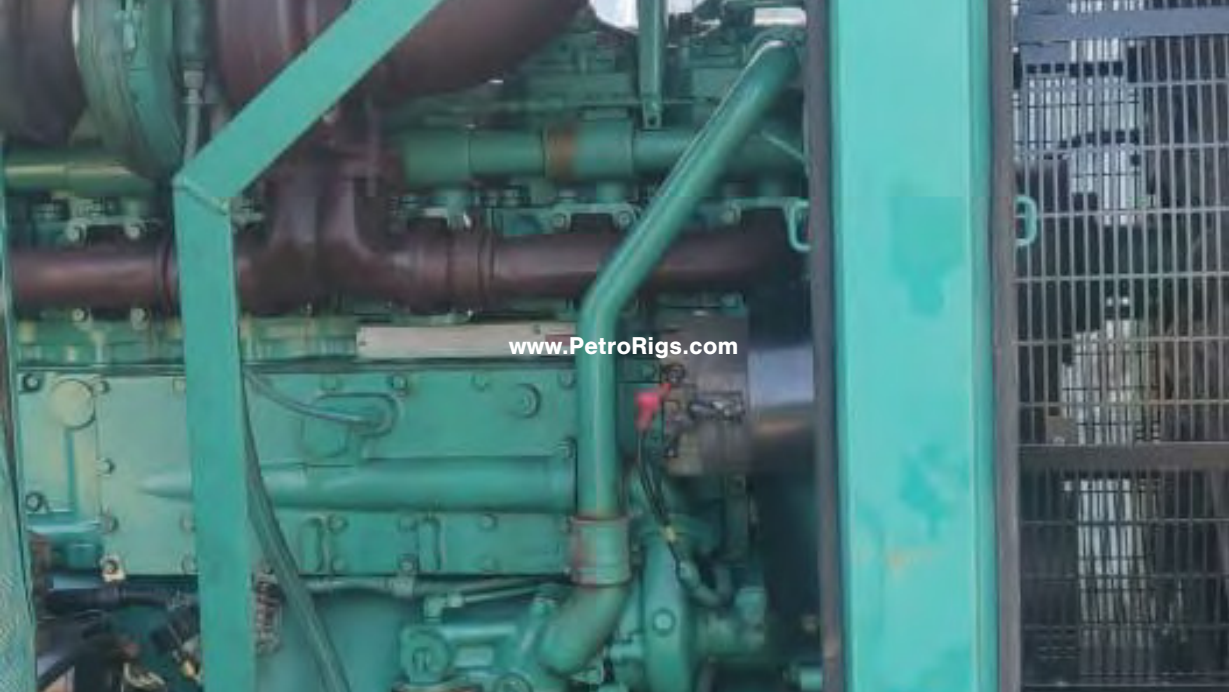
www.PetroRigs.com

25415020	GROSS POWER KW	583	AT	1500	RPM	E.C.S		THIS ENGINE CONFORMS TO ENVIRONMENT (PROTECTION) RULES-1986	
QSK-19-G6	GROSS POWER KW		AT		RPM	INJECTION TIMING CODE			
63087	TYPE APPROVAL CERTIFICATE NO.		ARAI/MoEF/DGTA/CILP-F		33/2014-07			WARNING INJURY MAY RESULT AND WARRANTY IS VOID IF FUEL RATE, RPM OR ALTITUDES EXCEED PUBLISHED MAXIMUM VALUES FOR THIS MODEL AND APPLICATION.	
MFG 23-3-2016	VALVE LASH COLD	.014	INT.	.027	EXH	CPL	4382		FAMILY
1150/19	G	INJECTOR SET		T.S. ZERO LASH		GOVERNED SPEED			WARRANTY START DATE
		MFG BY CUMMINS IN		ST		S (19)			

www.PetroRigs.com



www.PetroRigs.com



www.PetroRigs.com



www.PetroRigs.com



www.PetroRigs.com



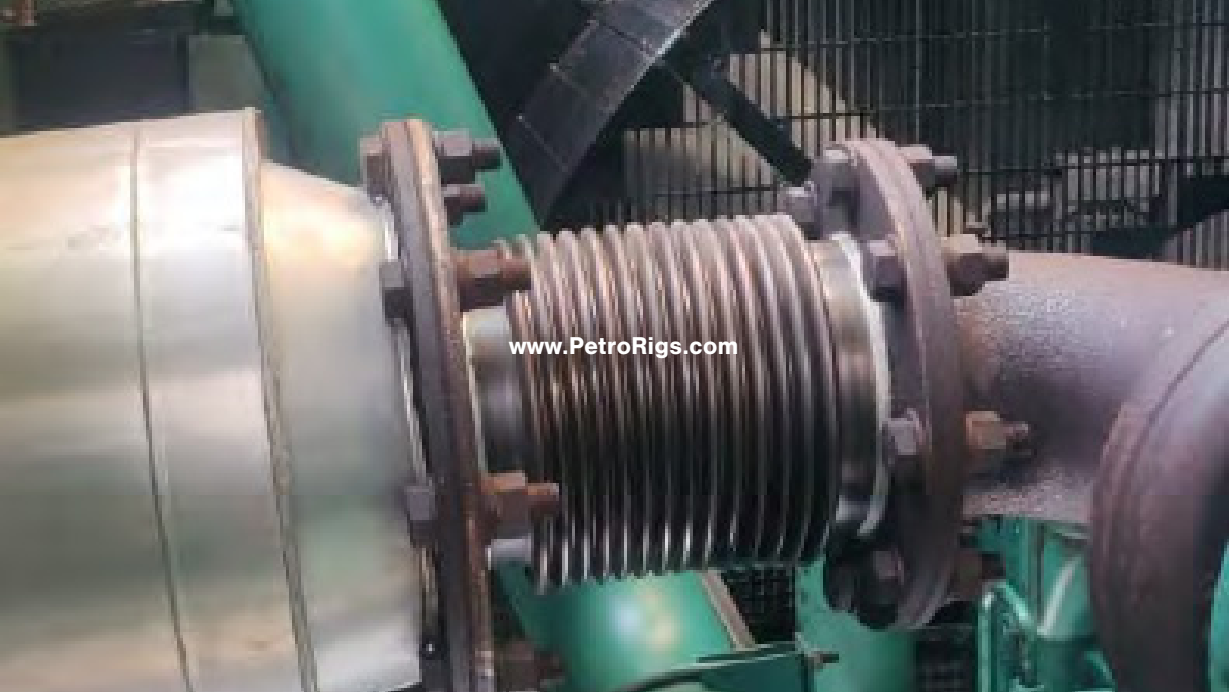
www.PetroRigs.com



www.PetroRigs.com



www.PetroRigs.com



www.PetroRigs.com

A close-up photograph of a metal grate assembly. The grate is composed of a grid of horizontal and vertical bars. A central horizontal panel is attached to the grate. The assembly is secured with several bolts or fasteners. The background is a dark, textured surface, possibly a metal plate, with a greenish tint on the left and right edges.

www.PetroRigs.com

www.PetroRigs.com

www.PetroRigs.com