



(1) 2163889-87-82 REV81 5 PIPE

HH66989 HT42 REP76

450-12186088-5-4 43H2C





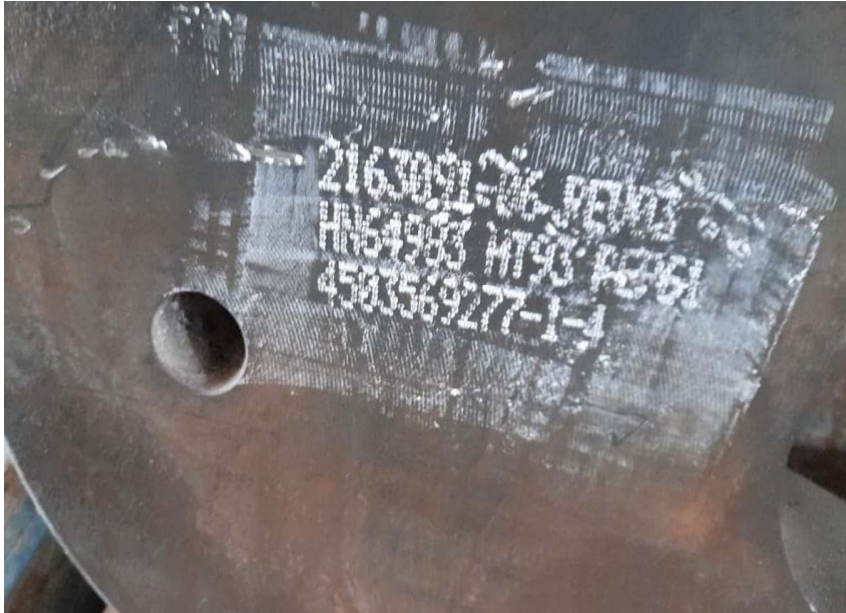
**(2) 2163889-87-82-REV81 5
PIPE**

HN56989 HT42 REP76

1584210944-1-1

43HRC





(3) 2163891-86-REV83

HN64983 HT93 REP61

4503569277-1-4





(4) 2163091-06 REV03

HN64589 HT87 REP 6

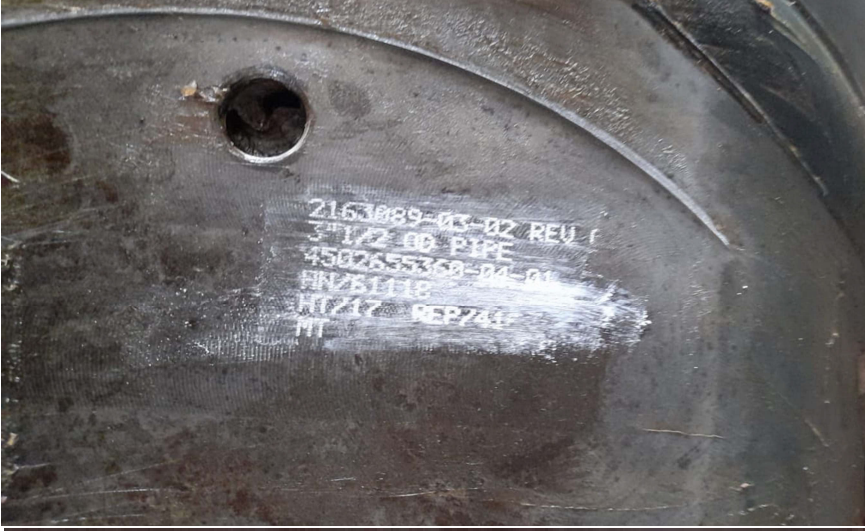
4503504584-1-4





(5)..... ?





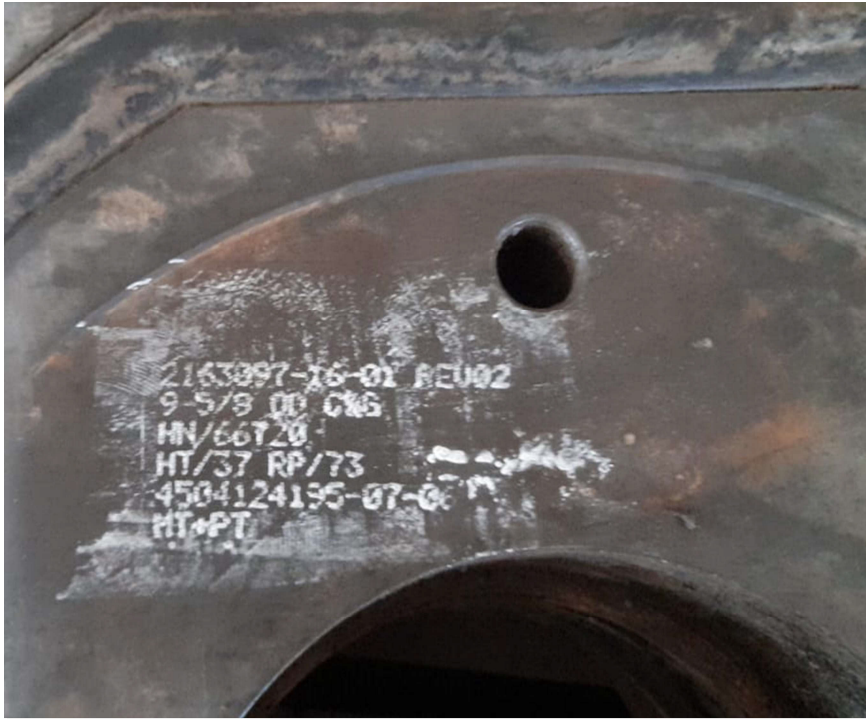
(6) 2163089-03-02-REV1 3 1/2 8 PIPE

4502655368-84-0

AN281113

HT217 REP 741





(7) 2163897-16-01 REV02

9-5/8 OD C6

HN/66T20

HT/37 RP/73

45041241295-07-06

HT-PT





(8) ASSY PN 310434 A2



(9) ASSY PN 3104348





(10) R5984-RB3



(11) 3102056-2 H2

HN-M939

SN-M6026-2





(12) ASSY PN-3100393





(13) ASSY PN-3116954

2 7/8-6





(14) 9 5/8

0-A-0





(15) ASSY PN:3100950-

14 REV D

GEPO:500074-2

GE JN: CSD2527390

RPR:04/2016

LE:1511002-02

R040/15L

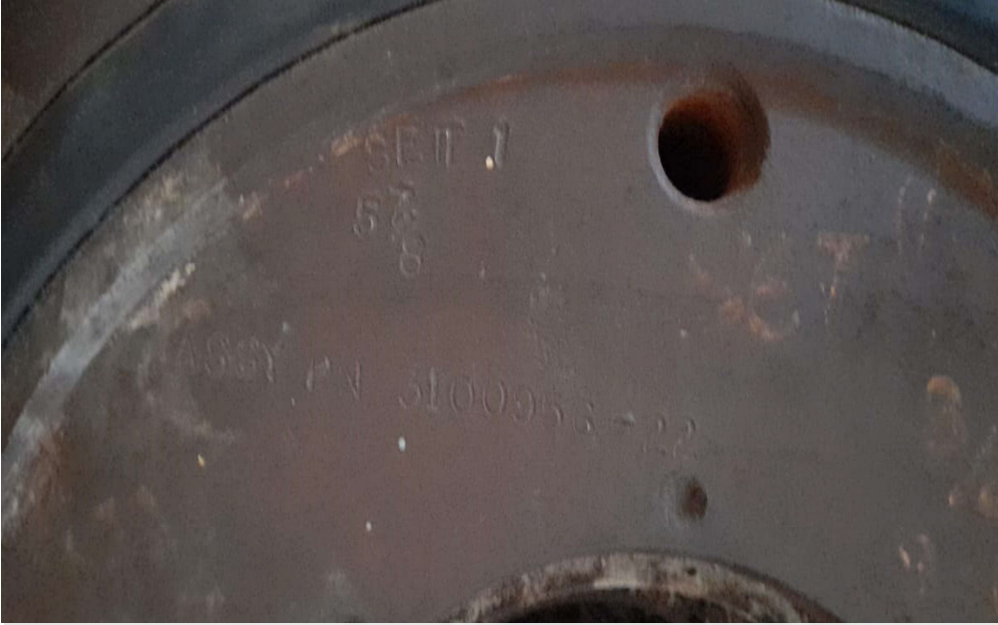




(16) 22-95B0010

SET-2 5 7/8





(17) SET-1 5 7/8 ASSY

PN 3100956-22





(18) ASSY PN-3104343

SET-2

35-6





(19) 95/8

B 0-A O



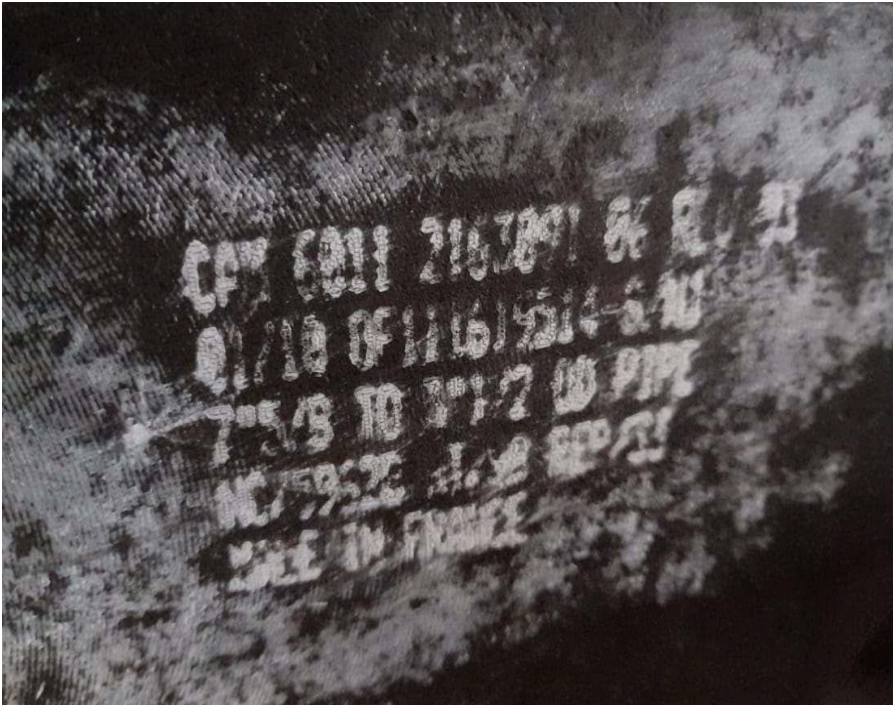


(20) SET-1 9 7/8 5

ASSY

PN-3116232-06 A2





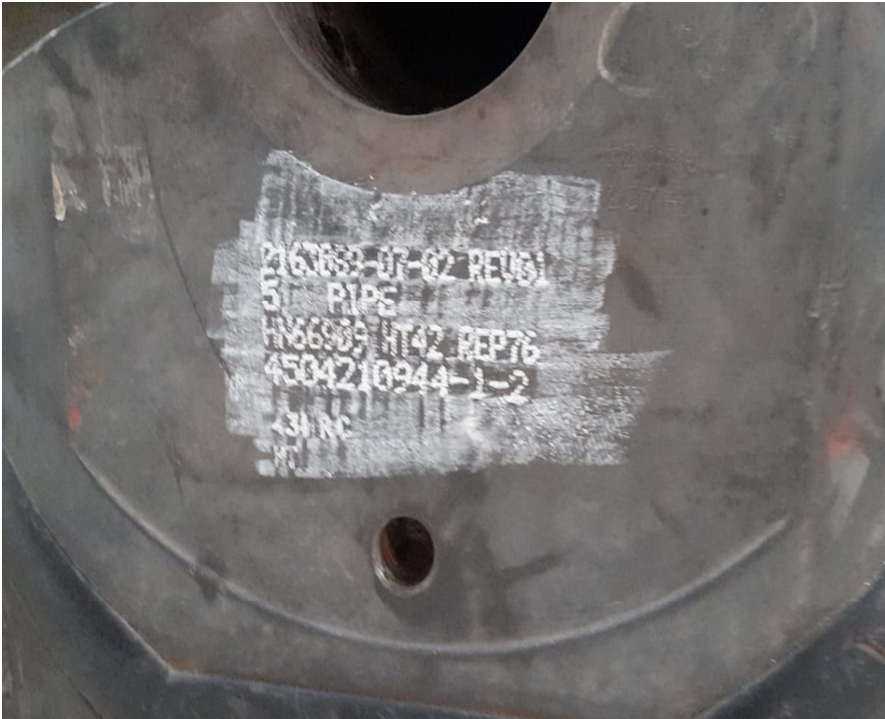
**(23) CF 6811 2163891 86
REV 93**

81/10 OF 111619514-6

7"5/8 TO 3"1/2 00 PIPE

NC759520 REP 35





(24)P163069-07-02- REV61

5 PIPE

HN66909 HT42 REP76

4504210911-1-2 431 RC





(25) 216894-6 REV 03

HN64589 HT96 REP 68

4593504584-11

248HBU





(26) 2163097-16-01-

REV02

9-5/8 OR C&G

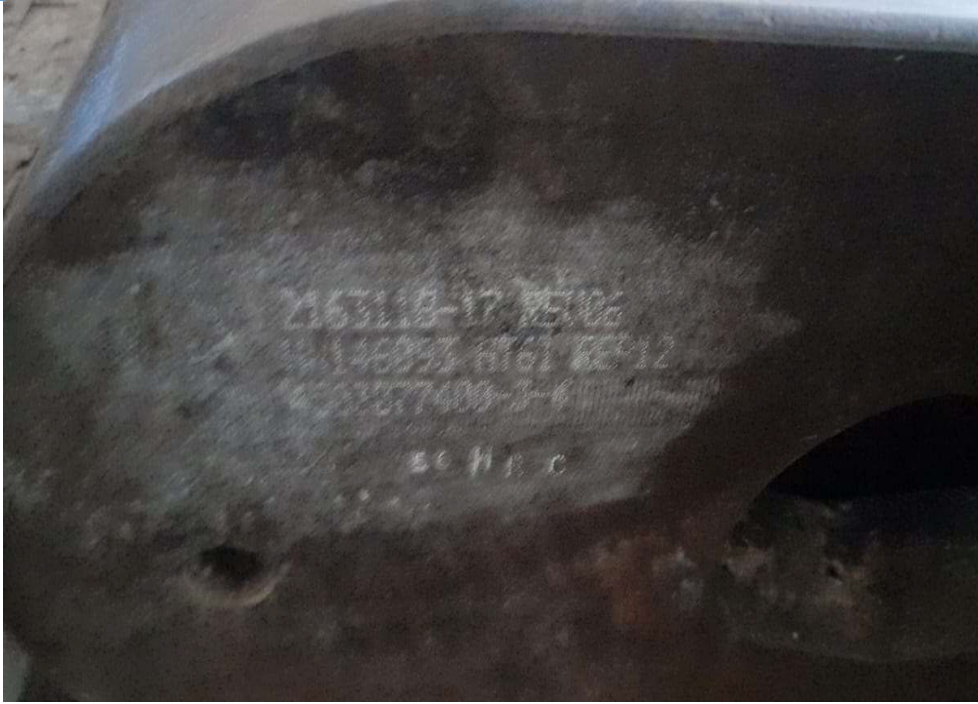
HN/66T20

HT/37 RP/73

4504124195-07-06

HT+PT





(27) 2163118-17-

REV06

1814693 HT61

REP 12

4533077400-3-4





(28) 63087-16-01-REV02

9-5/3





(29)2163089-06-03-REV02

5-1/2 PIPE

HN64160 HT 76 REP 58 MI

4503404372-2-7 4HRC

23HRC/243HB

