

Equipment Details



Equipment Not Delivered

	Serial No	Qty	Oper	Cond	S/N Vwd	Loc	Hrs
SPARE WORKING REEL FOR 12"WIDE CTU; TWO BASES INCLUDED	3315602200101	1				1	0
<i>Inspection Note:</i>							
To be delivered 3/2020							
		Totals:	1				

Equipment Inspected

	Serial No	Qty	Oper	Cond	S/N Vwd	Loc	Hrs
NEXUS 4:1 15K DE-BOOSTER ASSEMBLY	121918NX-10	1	NO	N	POS	1	
NEXUS 4:1 15K DE-BOOSTER ASSEMBLY	121918NX-21	1	NO	N	POS	1	
NEXUS BOP, 5-1/8" 15K IH DUAL COMBI BOP	112018NX-03	1	NI	N	VWD	1	
NEXUS BOP, 5-1/8" 15K IH QUAD	052819NX-04	1	NI	N	VWD	1	
NEXUS FLANGE, 5" 15K BX169X5.5" 10K B BOX	111318NX-02	1	NO	N	POS	1	
NEXUS FLANGE, 5" 15K BX169X5.5" 10K B PIN	010319NX-10	1	NI	N	POS	1	
NEXUS FLOW CROSS, 5" 15K BX169 (2XBX154)	112618NX-09	1	NI	N	POS	1	
NEXUS LUBRICATOR 5.5" 10K TYPE-B, 10'	112718NX-07	1	NI	N	VWD	1	
NEXUS LUBRICATOR 5.5" 10K TYPE-B, 10'	112918NX-08	1	NI	N	VWD	1	
NEXUS LUBRICATOR 5.5" 10K TYPE-B, 10'	112918NX-09	1	NI	N	VWD	1	
NEXUS LUBRICATOR 5.5" 10K TYPE-B, 10'	112918NX-10	1	NI	N	VWD	1	
NEXUS LUBRICATOR 5.5" 10K TYPE-B, 10'	112918NX-11	1	NI	N	VWD	1	
NEXUS LUBRICATOR 5.5" 10K TYPE-B, 10'	112718NX-06	1	NO	N	VWD	1	0
NEXUS LUBRICATOR, 5-1/8" 15K BX-169, 10'	121918NX-04	1	NI	N	VWD	1	
NEXUS LUBRICATOR, 5-1/8" 15K BX-169, 10'	121918NX-05	1	NI	N	VWD	1	
NEXUS LUBRICATOR, 5-1/8" 15K BX-169, 10'	121918NX-15	1	NO	N	VWD	1	
NEXUS LUBRICATOR, 5-1/8" 15K BX-169, 10'	121918NX-16	1	NO	N	POS	1	
NEXUS LUBRICATOR, 5-1/8" 15K BX-169, 10'	121918NX-10	1	NO	N	POS	1	
NEXUS LUBRICATOR, 5-1/8" 15K BX-169, 10'	121918NX-14	1	NO	N	POS	1	
NEXUS MULTICOUPLER ASSY, 5" 15K DUAL COMBI BOP		1	NO	N	POS	1	
NEXUS MULTICOUPLER ASSY, 5" 15K IH QUAD BOP		1	NO	N	POS	1	
NEXUS NIGHT CAP, 5-1/2" 10K BOWEN, 9.5T WLL	102419NX-02	1	NI	N	POS	1	
NEXUS NIGHT CAP, 5-1/8" 15K BX-169	011619NX-02	1	NI	N	POS	1	
NEXUS STRIPPER, 4-1/16" 15K 2-DOOR	0801219NX-01	1	NI	N	POS	1	
PREMIER COIL ONE PIECE SUPPORT TRAILER	5JYDF5331KED13362	1	T	N	VWD	1	0
PREMIER COIL SKID MOUNTED POWER PACK	2992609190101	1	NO	N	POS	1	0
<i>Inspection Note:</i>	Fuel line not yet installed due to an added customization from client.						
PREMIER COIL TRAILER	7KF1P7268KA000109	1	T	N	VWD	1	

Client Note: PART OF 2-3/8" REEL TRAILER W/PCS-130 INJECTOR HEAD, 10FT CABIN, TWIN-STEER TRACTOR

INCL
UDED





Equipment Inspected

	Serial No	Qty	Oper	Cond	S/N Vwd	Loc	Hrs
TANDEM BOOSTER FOR 2-3/8" REEL TRAILER	7KF1P1222KA000049	1	T	N	VWD	1	
TRIDEM JEEP FOR 2-3/8" REEL TRAILER	7KF1P3637KA000045	1	T	N	VWD	1	
Totals:		29					

General Overview

	Serial No	Qty	Oper	Cond	S/N Vwd	Loc	Hrs
GENERAL OVERVIEW OF ALL OTHER EQUIPMENT ON ATTACHED INVOICES		1				1	
Confirmation	Confirmed/Received						
Totals:		1					

Information Obtained

	Serial No	Qty	Oper	Cond	S/N Vwd	Loc	Hrs
PREMIER COIL 10FT CABIN, TWIN-STEER TRACTOR	1NKDX4TX8LR373279	1	V	N	VWD	1	0
<i>Client Note:</i>	PART OF 2-3/8" REEL TRAILER W/PCS-130 INJECTOR HEAD, 10FT CABIN, TWIN-STEER TRACTOR INCLUDED						
Odometer	2,591						
PREMIER COIL PCS-130 INJECTOR HEAD	3291911190101	1	NO	N	VWD	1	0
<i>Client Note:</i>	PART OF 2-3/8" REEL TRAILER W/PCS-130 INJECTOR HEAD, 10FT CABIN, TWIN-STEER TRACTOR INCLUDED						
Serial Number	Discrepancy 2944408190101						
Totals:		2					

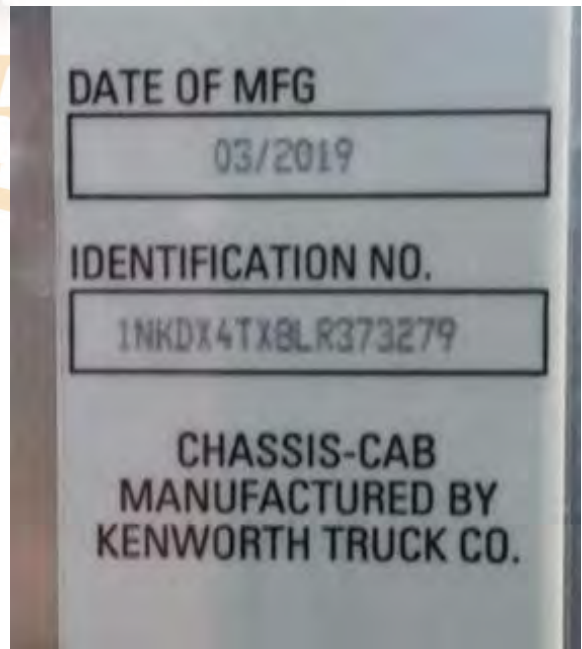
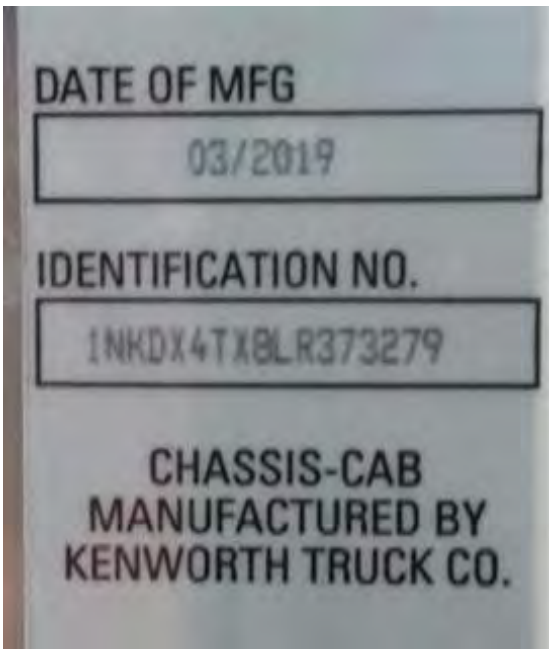
Location Legend

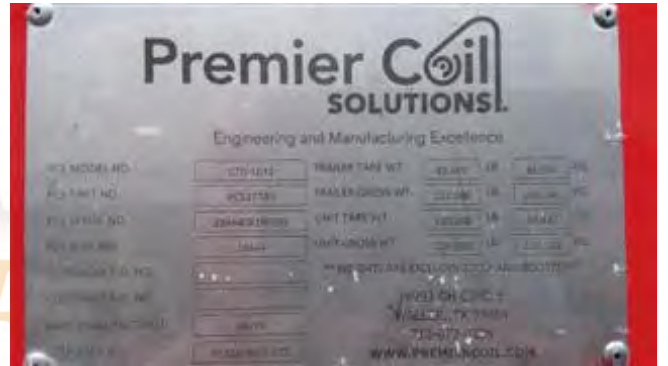
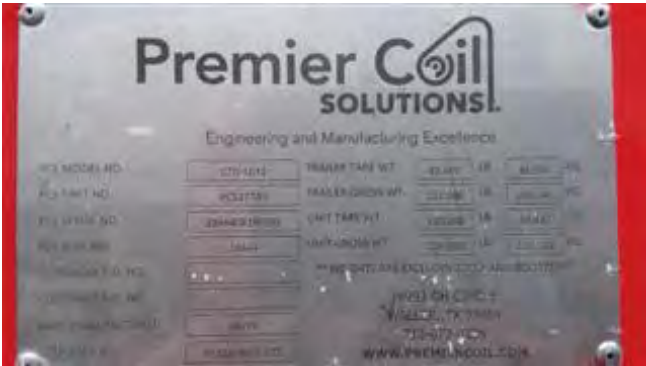
Loc 1: 18993 GH Circle, Waller, TX 77484

Coding Legend

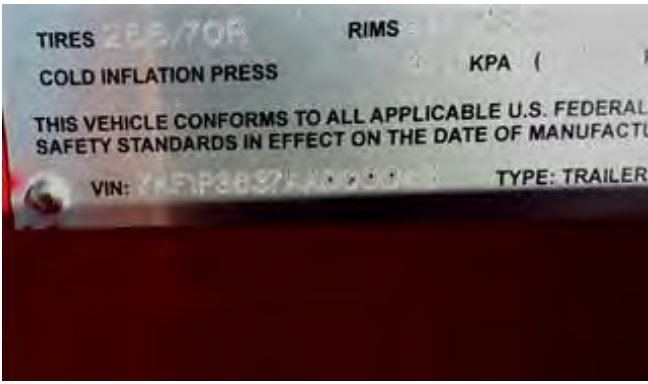
Oper- NI	Not Installed	S/N Vwd- POS	Not Viewed/Positioning
Oper- NO	Not Operational	S/N Vwd- VWD	Viewed
Oper- T	Trailer/Nonoperational Rolling Stock		
Oper- V	Viewed Operating		
Cond- N	New		

Photos



















Equipment Details



Other Discrepancy

	Serial No	Qty	Oper	Cond	S/N Vwd	Loc	Hrs
NEXUS LUBRICATOR 5.5" 10K TYPE-B, 10'	112718NX-06	1				1	0
<i>Inspection Note: Unable to locate - may be at Midland, TX location.</i>							
Totals:		1					

Equipment Inspected

	Serial No	Qty	Oper	Cond	S/N Vwd	Loc	Hrs
NEXUS 4:1 15K DE-BOOSTER ASSEMBLY	121918NX-10	1	I	G	UNA	1	0
NEXUS 4:1 15K DE-BOOSTER ASSEMBLY	121918NX-21	1	I	G	UNA	1	0
NEXUS FLANGE, 5" 15K BX169X5.5" 10K B BOX	111318NX-02	1	I	G	UNA	1	0
NEXUS FLANGE, 5" 15K BX169X5.5" 10K B PIN	010319NX-10	1	I	G	VWD	1	0
NEXUS FLOW CROSS, 5" 15K BX169 (2XBX154)	112618NX-09	1	I	G	UNA	1	0
NEXUS LUBRICATOR 5.5" 10K TYPE-B, 10'	112718NX-07	1	I	G	UNA	1	0
NEXUS LUBRICATOR 5.5" 10K TYPE-B, 10'	112918NX-08	1	I	G	UNA	1	0
NEXUS LUBRICATOR 5.5" 10K TYPE-B, 10'	112918NX-10	1	I	G	VWD	1	0
NEXUS LUBRICATOR 5.5" 10K TYPE-B, 10'	112918NX-11	1	I	G	UNA	1	0
NEXUS LUBRICATOR, 5-1/8" 15K BX-169, 10'	121918NX-04	1	I	G	UNA	1	0
NEXUS LUBRICATOR, 5-1/8" 15K BX-169, 10'	121918NX-05	1	I	G	UNA	1	0
NEXUS LUBRICATOR, 5-1/8" 15K BX-169, 10'	121918NX-10	1	I	G	UNA	1	0
NEXUS LUBRICATOR, 5-1/8" 15K BX-169, 10'	121918NX-14	1	I	G	UNA	1	0
NEXUS LUBRICATOR, 5-1/8" 15K BX-169, 10'	121918NX-15	1	I	G	UNA	1	0
NEXUS LUBRICATOR, 5-1/8" 15K BX-169, 10'	121918NX-16	1	I	G	UNA	1	0
NEXUS MULTICOUPLER ASSY, 5" 15K DUAL COMBI BOP		1	I	G	UNA	1	0
NEXUS MULTICOUPLER ASSY, 5" 15K IH QUAD BOP		1	I	G	UNA	1	0
PREMIER COIL PCS-130 INJECTOR HEAD	3291911190101	1	I	G	VWD	1	0
<i>Client Note: PART OF 2-3/8" REEL TRAILER W/PCS-130 INJECTOR HEAD, 10FT CABIN, TWIN-STEER TRACTOR INCLUDED</i>							
PREMIER COIL SKID MOUNTED POWER PACK	2992609190101	1	I	G	VWD	1	0
PREMIER COIL TRAILER	7KF1P7268KA000109	1	I	G	VWD	1	0
<i>Client Note: PART OF 2-3/8" REEL TRAILER W/PCS-130 INJECTOR HEAD, 10FT CABIN, TWIN-STEER TRACTOR INCLUDED</i>							
Totals:		20					

General Overview

Serial No	Qty	Oper	Cond	S/N Vwd	Loc	Hrs
GENERAL OVERVIEW OF ALL OTHER EQUIPMENT ON ATTACHED INVOICES	1				1	0
Totals:		1				

Information Obtained

Serial No	Qty	Oper	Cond	S/N Vwd	Loc	Hrs
NEXUS NIGHT CAP, 5-1/8" 15K BX-169	1	I	G	OBT	1	0
Serial Number	Discrepancy 102419NX-02					
<i>Inspection Note: 102419NX-02</i>						
PREMIER COIL ONE PIECE SUPPORT TRAILER	1	I	G	VWD	1	0
Serial Number	5JYDF5331KED13362					
Make	Premier					
License Number/State	TX - 172C268					
License Expiration	N/A					
Odometer	N/A					
Model	Coil One Piece					
Totals:		2				

Other Location

Serial No	Qty	Oper	Cond	S/N Vwd	Loc	Hrs
PREMIER COIL 10FT CABIN, TWIN-STEER TRACTOR	1				1	0
<i>Client Note: PART OF 2-3/8" REEL TRAILER W/PCS-130 INJECTOR HEAD, 10FT CABIN, TWIN-STEER TRACTOR INCLUDED</i>						
Address	1400 CR 110					
City, State, Zip	Midland, TX 79707					
SPARE WORKING REEL FOR 12"WIDE CTU; TWO BASES INCLUDED	1				1	0
Address	1400 CR 110					
City, State, Zip	Midland, TX					
TANDEM BOOSTER FOR 2-3/8" REEL TRAILER	1				1	0
Address	1400 CR 110					
City, State, Zip	Midland, TX					
TRIDEM JEEP FOR 2-3/8" REEL TRAILER	1				1	0
Address	1400 CR 110					
City, State, Zip	Midland, TX					
Totals:		4				

Location Legend

Loc 1: 701 Fisher Road, Longview, TX 75605

Coding Legend

Oper- I	Non-mechanical but Installed	S/N Vwd- OBT	Obtained
		S/N Vwd- UNA	Unable to be located
		S/N Vwd- VWD	Viewed
Cond- G	Used/Good		

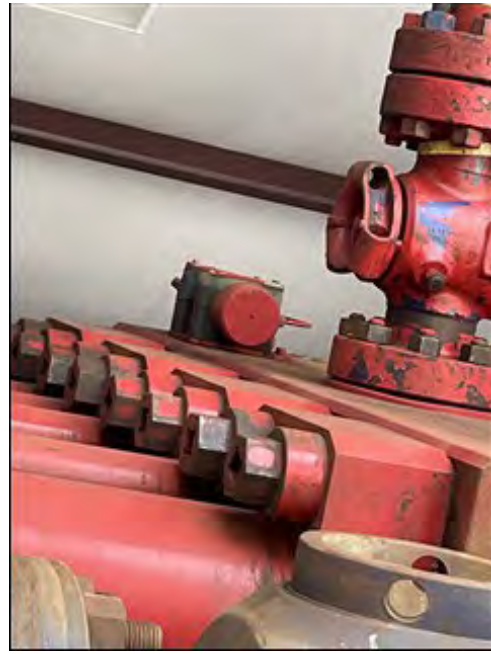


Photos























Equipment Details

Equipment Not Accessible

	Serial No	Qty	Oper	Cond	S/N Vwd	Loc	Hrs
GENERAL OVERVIEW OF ALL OTHER EQUIPMENT ON ATTACHED INVOICES		1				1	0
<i>Inspection Note:</i> On job site							
NEXUS 4:1 15K DE-BOOSTER ASSEMBLY	121918NX-10	1				1	0
<i>Inspection Note:</i> On job site							
NEXUS 4:1 15K DE-BOOSTER ASSEMBLY	121918NX-21	1				1	0
<i>Inspection Note:</i> On job site							
NEXUS FLANGE, 5" 15K BX169X5.5" 10K B BOX	111318NX-02	1				1	0
<i>Inspection Note:</i> On job site							
NEXUS FLANGE, 5" 15K BX169X5.5" 10K B PIN	010319NX-10	1				1	0
<i>Inspection Note:</i> On job site							
NEXUS FLOW CROSS, 5" 15K BX169 (2XBX154)	112618NX-09	1				1	0
<i>Inspection Note:</i> On job site							
NEXUS LUBRICATOR 5.5" 10K TYPE-B, 10'	112718NX-06	1				1	0
<i>Inspection Note:</i> On job site							
NEXUS LUBRICATOR 5.5" 10K TYPE-B, 10'	112718NX-07	1				1	0
<i>Inspection Note:</i> On job site							
NEXUS LUBRICATOR 5.5" 10K TYPE-B, 10'	112918NX-08	1				1	0
<i>Inspection Note:</i> On job site							
NEXUS LUBRICATOR 5.5" 10K TYPE-B, 10'	112918NX-10	1				1	0
<i>Inspection Note:</i> On job site							
NEXUS LUBRICATOR 5.5" 10K TYPE-B, 10'	112918NX-11	1				1	0
<i>Inspection Note:</i> On job site							
NEXUS LUBRICATOR, 5-1/8" 15K BX-169, 10'	121918NX-04	1				1	0
<i>Inspection Note:</i> On job site							
NEXUS LUBRICATOR, 5-1/8" 15K BX-169, 10'	121918NX-05	1				1	0
<i>Inspection Note:</i> On job site							

	Serial No	Qty	Oper	Cond	S/N Vwd	Loc	Hrs
NEXUS LUBRICATOR, 5-1/8" 15K BX-169, 10'	121918NX-10	1				1	0
<i>Inspection Note:</i>							
On job site							
NEXUS LUBRICATOR, 5-1/8" 15K BX-169, 10'	121918NX-14	1				1	0
<i>Inspection Note:</i>							
On job site							
NEXUS LUBRICATOR, 5-1/8" 15K BX-169, 10'	121918NX-15	1				1	0
<i>Inspection Note:</i>							
On job site							
NEXUS LUBRICATOR, 5-1/8" 15K BX-169, 10'	121918NX-16	1				1	0
<i>Inspection Note:</i>							
On job site							
NEXUS MULTICOUPLER ASSY, 5" 15K DUAL COMBI BOP		1				1	0
<i>Inspection Note:</i>							
On job site							
NEXUS MULTICOUPLER ASSY, 5" 15K IH QUAD BOP		1				1	0
<i>Inspection Note:</i>							
On job site							
NEXUS NIGHT CAP, 5-1/8" 15K BX-169	011619NX-02	1				1	0
<i>Inspection Note:</i>							
On job site							
PREMIER COIL 10FT CABIN, TWIN-STEER TRACTOR	1NKDX4TX8LR373279	1				1	0
<i>Client Note:</i> PART OF 2-3/8" REEL TRAILER W/PCS-130 INJECTOR HEAD, 10FT CABIN, TWIN-STEER TRACTOR INCLUDED							
<i>Inspection Note:</i>							
On job site							
PREMIER COIL ONE PIECE SUPPORT TRAILER	5JYDF5331KED13362	1				1	0
<i>Inspection Note:</i>							
On job site							
PREMIER COIL PCS-130 INJECTOR HEAD	3291911190101	1				1	0
<i>Client Note:</i> PART OF 2-3/8" REEL TRAILER W/PCS-130 INJECTOR HEAD, 10FT CABIN, TWIN-STEER TRACTOR INCLUDED							
<i>Inspection Note:</i>							
On job site							
PREMIER COIL SKID MOUNTED POWER PACK	2992609190101	1				1	0
<i>Inspection Note:</i>							
On job site							
PREMIER COIL TRAILER	7KF1P7268KA000109	1				1	0
<i>Client Note:</i> PART OF 2-3/8" REEL TRAILER W/PCS-130 INJECTOR HEAD, 10FT CABIN, TWIN-STEER TRACTOR INCLUDED							
<i>Inspection Note:</i>							
On job site							

	Serial No	Qty	Oper	Cond	S/N Vwd	Loc	Hrs
SPARE WORKING REEL FOR 12"WIDE CTU; TWO BASES INCLUDED	3315602200101	1				1	0

Inspection Note:

On job site

Totals: 26

Information Obtained

	Serial No	Qty	Oper	Cond	S/N Vwd	Loc	Hrs
TANDEM BOOSTER FOR 2-3/8" REEL TRAILER	7KF1P1222KA000049	1	V	G	VWD	1	0
TRIDEM JEEP FOR 2-3/8" REEL TRAILER	7KF1P3637KA000045	1	V	G	VWD	1	0

Totals: 2

Location Legend

Loc 1: 1400 NCR 1110, Midland, TX 79706

Coding Legend

Oper- V Viewed Operating

S/N Vwd- VWD Viewed

Cond- G Used/Good



Photos



