

RIG 6 SPECIFICATIONS

MAST & SUBSTRUCTURE

Mast Design	DSI
Height	138'
Load Rating	650,000 on 10 lines
Substructure	DSI
Floor Height	18'
Clear Height	16"
Drilling line	1 1/4"

BOP Equipment

Annular	13 5/8" 5000 PSI
Single Ram	
Double Ram	13 5/8" 5,000 PSI
Accumulator	6 Station/210 gallon
Choke Manifold	4 1/16" x 5000 PSI
BOP Winches	N/A
Gas Buster	Atmospheric

Tubulars

Drill Pipe	
Drill Collars	

Transport

Estimated loads

DRAWWORKS, TRAVELING, & PIPE HANDLING EQUIPMENT

Drawworks	Bridges MI-1000
Auxiliary Brake	Eaton 236 WCB
Top Drive	
Traveling Block	McKissick 350 Ton
Iron Roughneck	
Catwalk	

POWER PACKAGE

DWS Engines	
Generators	(2) Caterpillar C/15s 480V 455KW
Mud Pumps	(2) Caterpillar 3512C rated @ 1476 HP

Mud System

Mud Pumps	(2) GD PZ-11s rated @ 1600 HP/5000 PSI
Premix Tank	213 bbl Premix Tank
Suction Tank	400 bbl Suction Tank
Process Tank	400 bbl Process Tank
Trip Tank	100 bbl, w/ 4x3 centrifugal pump
Shale Shakers	(2) Brandt King Cobra

Fuel and Water Storage

Diesel	
Water	1000 bbl

(Optional Equipment)

www.PetroRigs.com



www.PetroRigs.com



www.PetroRigs.com





www.PetroRigs.com

www.PetroRigs.com





www.PetroRigs.com



www.PetroRigs.com

www.PetroRigs.com





www.PetroRigs.com



www.PetroRigs.com



www.PetroRigs.com

www.PetroRigs.com



www.PetroRigs.com





www.PetroRigs.com



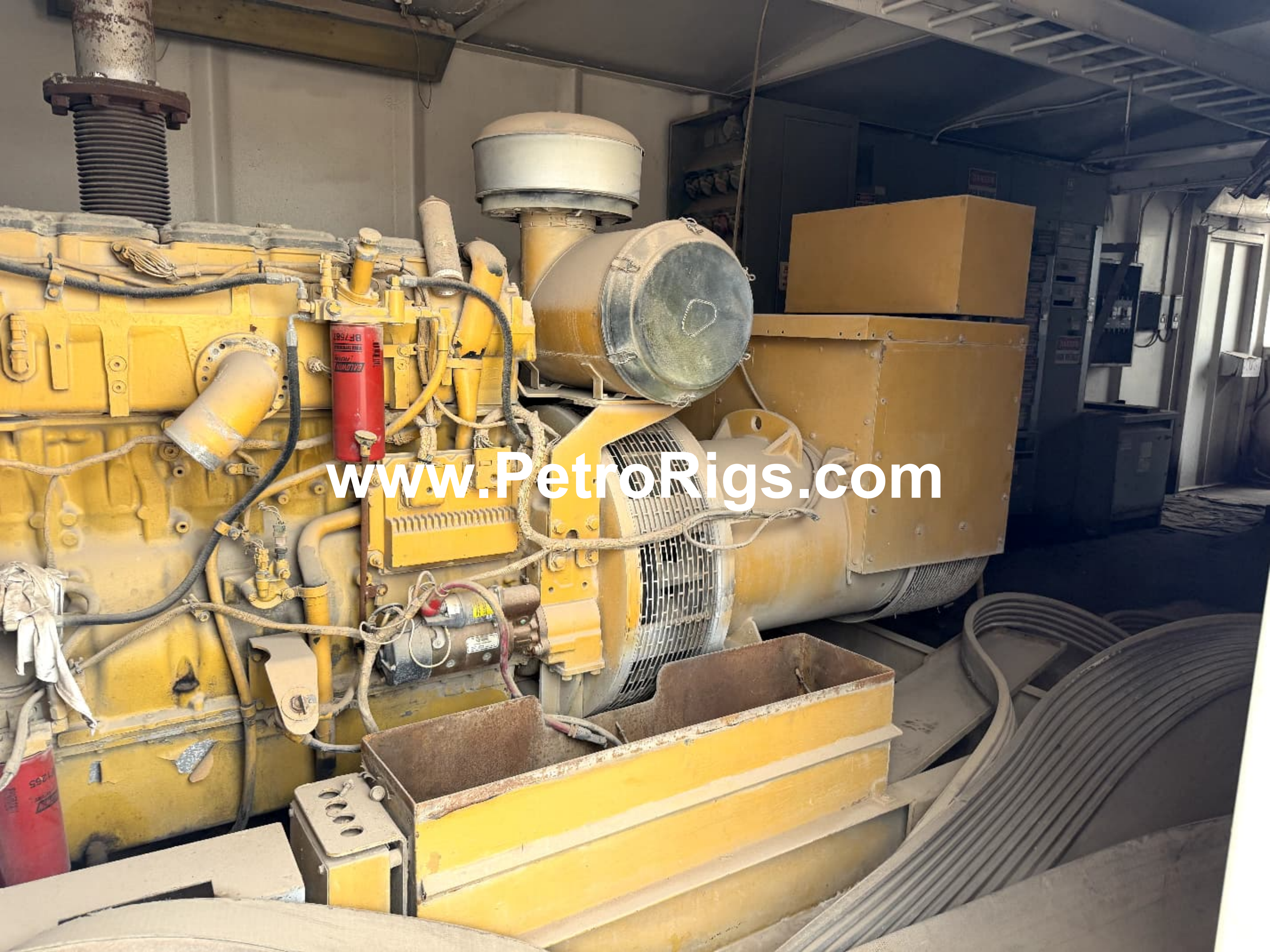
www.PetroRigs.com

www.PetroRigs.com





www.PetroRigs.com



www.PetroRigs.com

www.PetroRigs.com



www.PetroRigs.com



www.PetroRigs.com



www.PetroRigs.com





www.PetroRigs.com