

This equipment can be used on any offshore assets, such as jack-up rigs, offshore platforms or FPU/FPSO.



EWT - SKID

Extended Well Test (EWT) skid / Early Production System skid

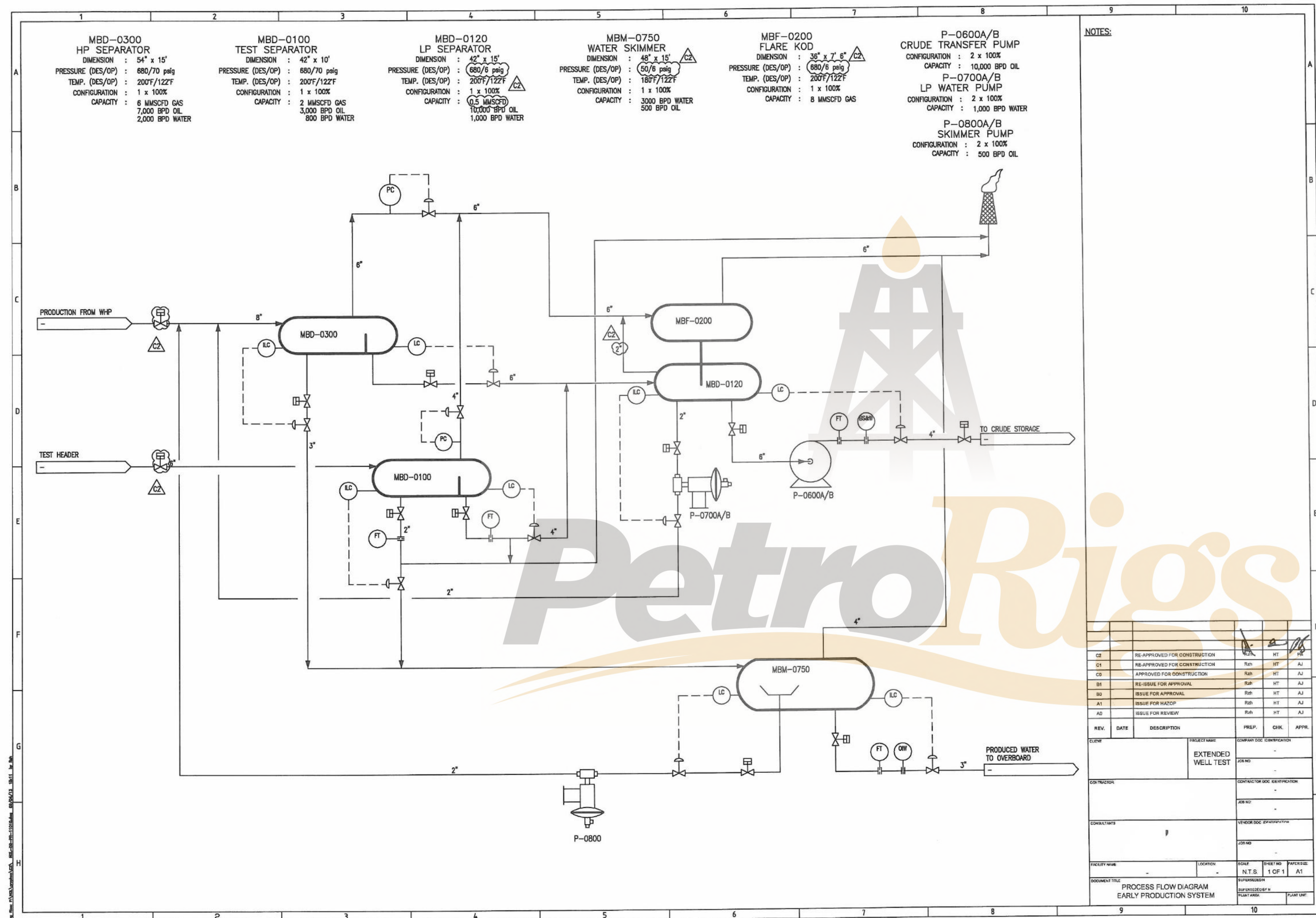
This skid is suitable to be utilized in early production systems, where the topside facilities will include primarily the crude separation train as well as the accompanying auxiliary systems: flaring system, produced water system, open & closed drain systems, utility systems and slop tank.

The EWT skid has the following process capacities :

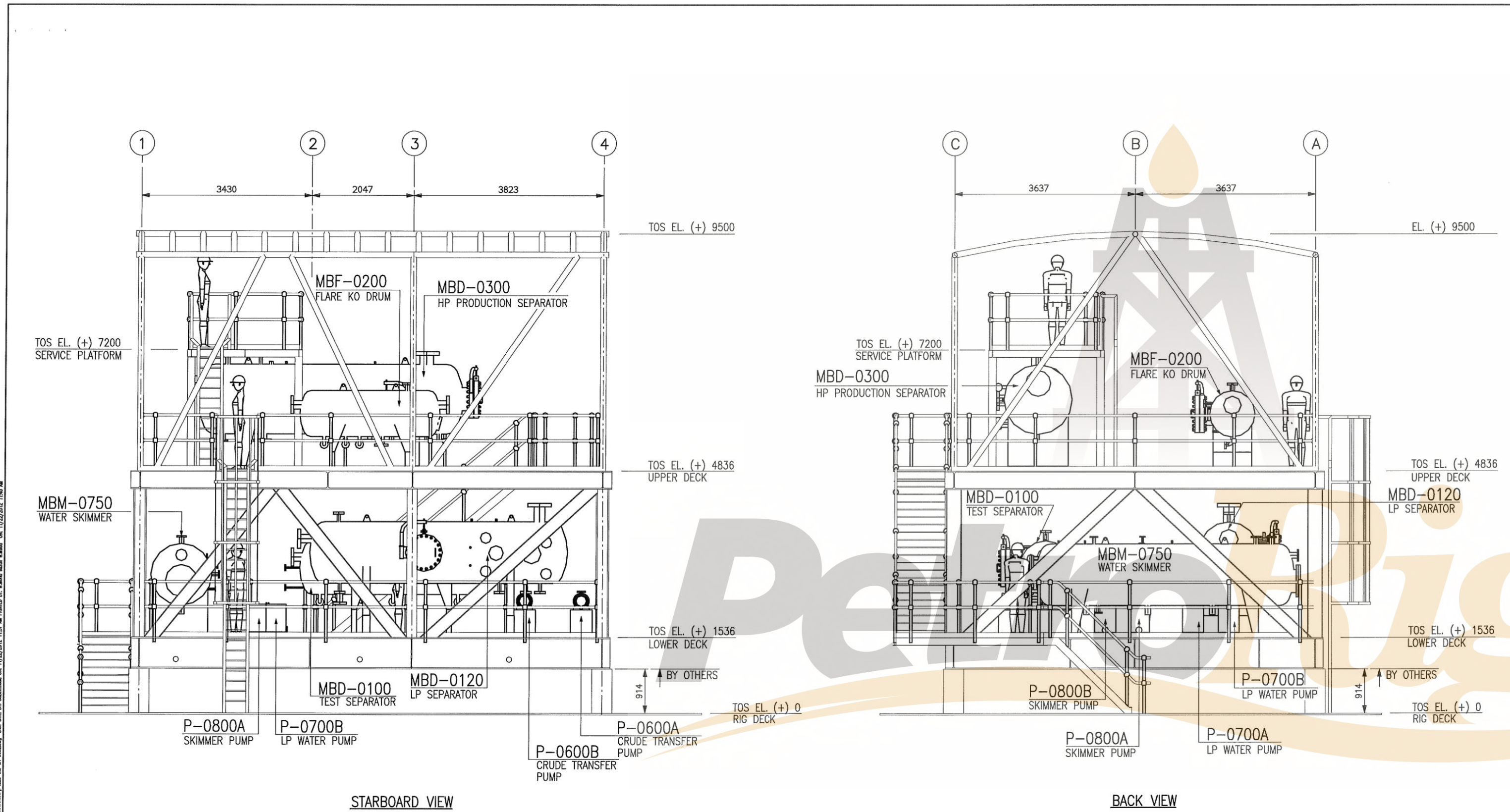
- Maximum Oil Production : 10,000 Bopd**
- Maximum Produced Water : 3,000 Bwpd**
- Maximum Total Liquid : 13,000 Blpd**
- Maximum Associated Gas : 8mmscfd**

Current Location : Port Klang Free Zone, Malaysia

TOPSIDE PROCESS FLOW DIAGRAM



EQUIPMENT GA DRAWINGS



CAD PRODUCED DRAWING - NO MANUAL REVISION ALLOWED

NOTES:
1. ALL DIMENSIONS AND ELEVATIONS SHOWN IN THE DRAWING ARE IN MILLIMETERS.

REV.	DESCRIPTION	DATE	BY	CHKD.	APPD.	DATE
C	APPROVED FOR CONSTRUCTION		WMS	ALY	HM	
B	ISSUED FOR APPROVAL		WMS	ALY	HM	
A	ISSUED FOR REVIEW					

DRAWING NO.	REV.	REFERENCE DRAWING	REV.	DESCRIPTION	DATE	DRAWN	CHKD.	APPD.	REVISED	DATE	APPD.

CONTRACT NO.	--	PROJECT TITLE	EXTENDED WELL TEST (EWT) PROJECT	
WORK ORDER	--	TITLE	EQUIPMENT LAYOUT ELEVATION VIEW (STARBOARD & BACK VIEW)	
DRAWN	WMS	CHECKED	ALY	CONSULTANT
DATE	--	DATE	--	CLIENT
SCALE	1:75	DATE	--	
APPROVED	HM	DATE	--	
DATE	--			
JOB NO.	P1225	DOC. NO.	P1225-ME-GA-0002	
AREA		LOCATION		
DISCIPLINE	ME	DRAWING NO.	GA-0002	SHEET NO.
				1/1
				REV. NO.
				C

